

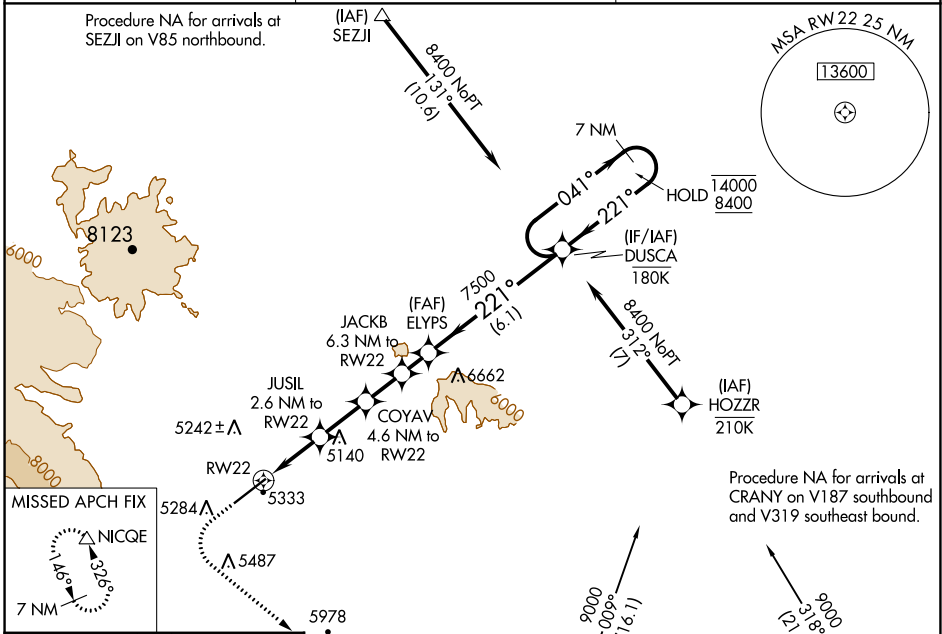
WAAS CH 90543 W22A	APP CRS 221°	Rwy Idg TDZE Apt Elev	7178 5076 5102
----------------------------------------	------------------------	-----------------------------	-------------------------------------------

RNAV (GPS) RWY 22

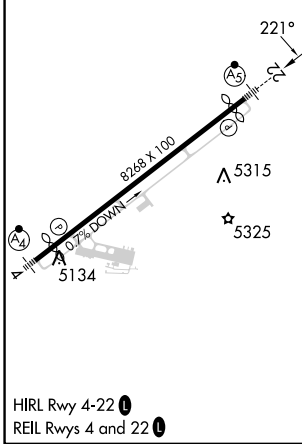
YELLOWSTONE RGNL (COD)

RNP APCH. ▽ ▲ ❄️ -10°C	MALSR AS	MISSED APPROACH: (Do not exceed 185K until NICQE) Climb to 5740 then climbing left turn to 9600 direct NICQE and hold, continue climb-in-hold to 9600.
---------------------------------	-------------	-----------------------------------------------------------------------------------------------------------------------------------------------------------

AWOS-3PT 135.075	SALT LAKE CENTER 127.75 351.9	UNICOM 122.8 (CTAF) 0
----------------------------	-----------------------------------------	---------------------------------



ELEV 5102	D	TDZE 5076
-----------	----------	-----------



5740	9600	NICQE	DUSCA 7 NM Holding Pattern		
* LNAV only		JUSIL 2.6 NM to RW22	COYAV 4.6 NM to RW22	JACKB 6.3 NM to RW22	ELYPS 7500
* 1.4 NM to RW22		5940*	6580*	7120*	7500
RW22		→ 221° → 14000		← 221° ← 8400	
				GP 3.00° TCH 53	
				041° → 14000	
				← 221° ← 8400	
				7500	
				7500	
				7500	
				7500	

CATEGORY	A	B	C	D
LPV DA	5399-1		323 (300-1)	
LNAV MDA	5600-1	524 (500-1)	5600-1½	524 (500-1½)
CIRCLING	5780-1 678 (700-1)	5900-1 798 (800-1)	5940-2½ 838 (900-2½)	7000-3 1898 (1900-3)

NW-1, 22 FEB 2024 to 21 MAR 2024

NW-1, 22 FEB 2024 to 21 MAR 2024

WAAS CH 45943 W04A	APP CRS 038°	Rwy ldg TDZE Apt Elev	7178 5097 5102
----------------------------------------	------------------------	-----------------------------	-------------------------------------------

RNAV (GPS) RWY 4

YELLOWSTONE RGNL (COD)

RNP APCH.

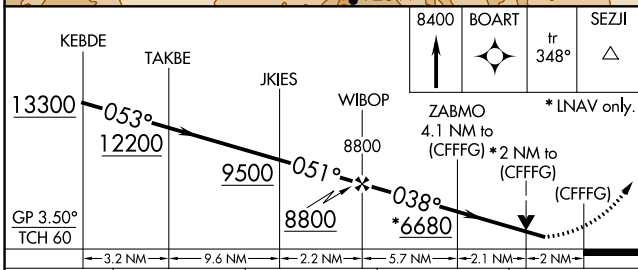
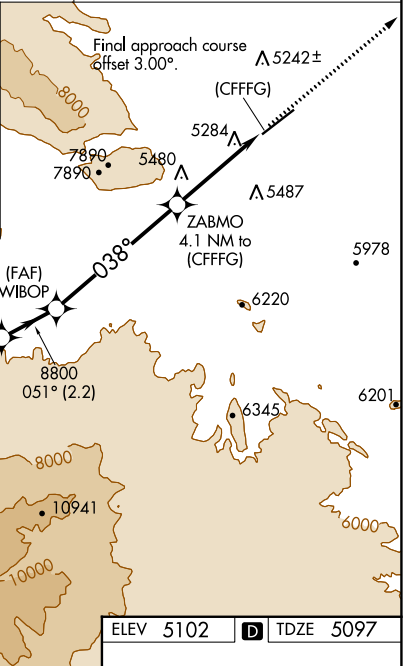
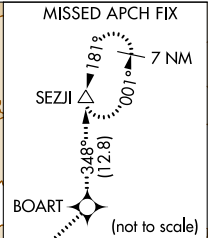
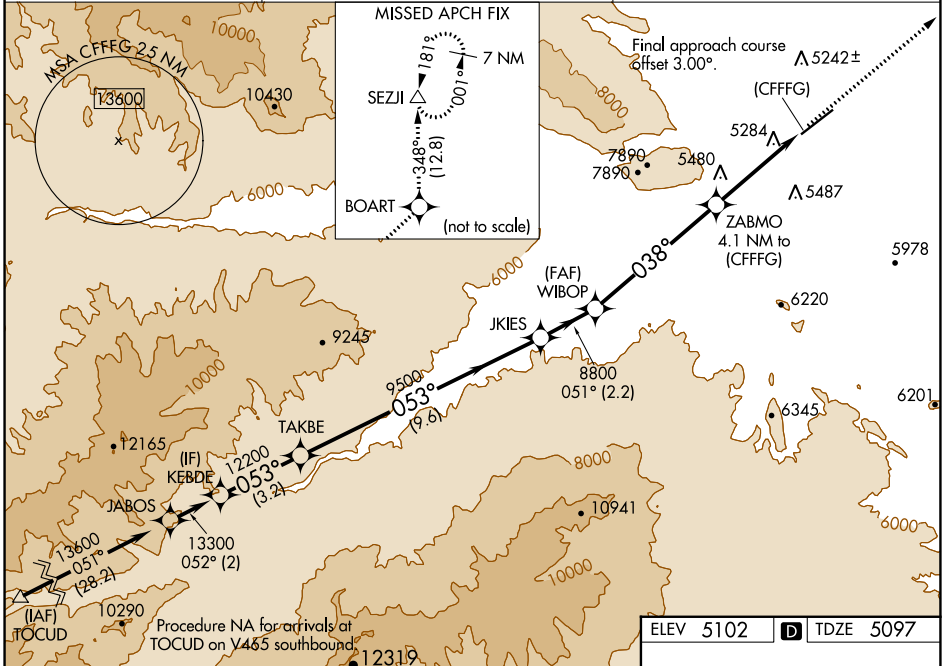
⚠ Rwy 4 helicopter visibility reduction below 3/4 SM NA.
Baro-VNAV NA.

⚠ -10°C

MALSF

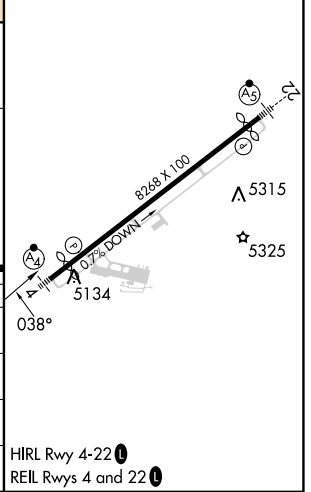
⚠ MISSED APPROACH: Climb to 8400 direct BOART and on track 348° to SEZJI and hold.

AWOS-3PT 135.075	SALT LAKE CENTER 127.75 351.9	UNICOM 122.8 (CTAF)
----------------------------	-----------------------------------------	-------------------------------



ELEV 5102	D TDZE 5097
-----------	--------------------

CATEGORY	A	B	C	D
LPV DA	5792-2		695 (700-2)	
LNAV/VNAV DA	5891-2½		794 (800-2½)	
LNAV MDA	5920-1 823 (900-1)	5920-1¼ 823 (900-1¼)	5920-2½ 838 (900-2½)	823 (900-2½)
C CIRCLING	5920-1¼ 818 (900-1¼)		5940-2½ 838 (900-2½)	7000-3 1898 (1900-3)



NW-1, 22 FEB 2024 to 21 MAR 2024

NW-1, 22 FEB 2024 to 21 MAR 2024

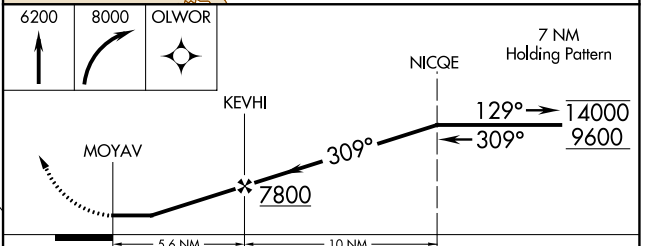
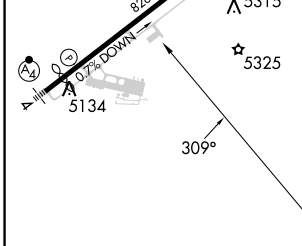
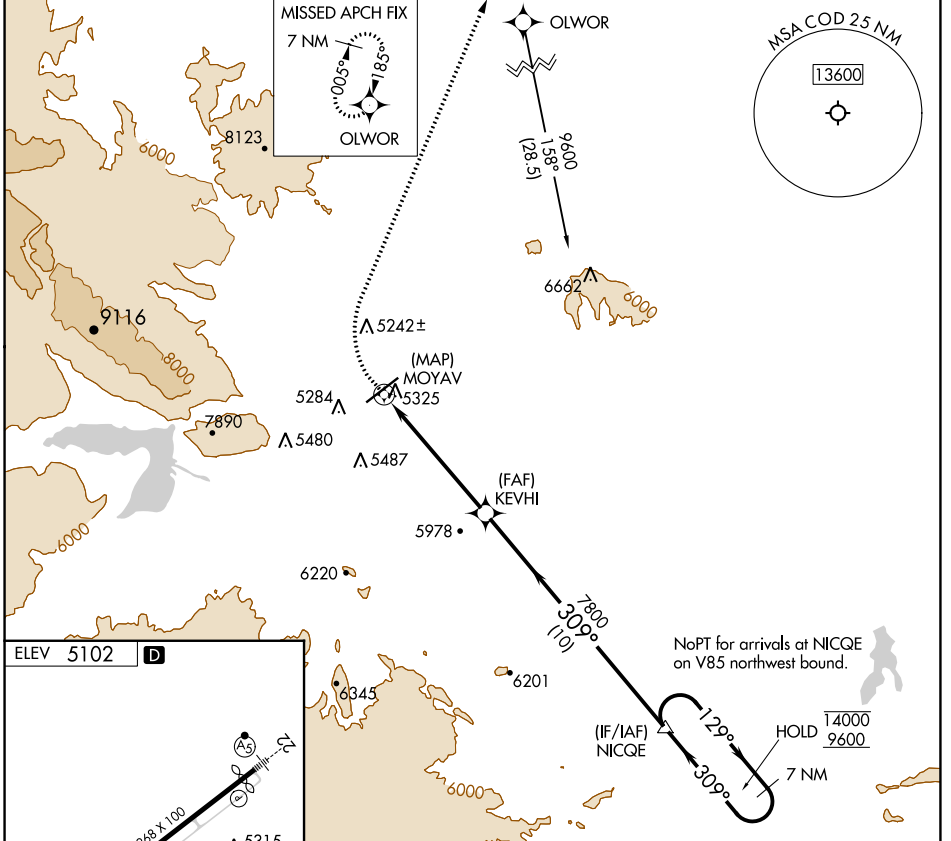
APP CRS 309°	Rwy Idg TDZE Apt Elev	N/A N/A 5102
------------------------	-----------------------------	-----------------------------------------

RNAV (GPS)-B

YELLOWSTONE RGNL (COD)

RNP APCH. ⚠ ⚡ -10°C	MISSED APPROACH: Climb to 6200 then climbing right turn to 8000 direct OLOWOR and hold.
------------------------------	-----------------------------------------------------------------------------------------

AWOS-3PT 135.075	SALT LAKE CENTER 127.75 351.9	UNICOM 122.8 (CTAF) 0
----------------------------	-----------------------------------------	---------------------------------



REIL Rwys 4 and 22 0 HIRL Rwy 4-22 0	CATEGORY	A	B	C	D
C CIRCLING		6160-1¼ 1058 (1100-1¼)	6160-1½ 1058 (1100-1½)	6160-3 1058 (1100-3)	6940-3 1838 (1900-3)

NW-1, 22 FEB 2024 to 21 MAR 2024

NW-1, 22 FEB 2024 to 21 MAR 2024

CODY, WYOMING

AL-5243 (FAA)

23278

VOR/DME COD 111.8 Chan 55	APP CRS 191°	Rwy Idg TDZE Apt Elev N/A N/A 5102
-----------------------------------------------	------------------------	------------------------------------------------------------------------

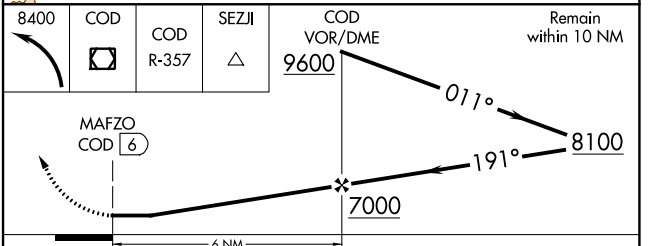
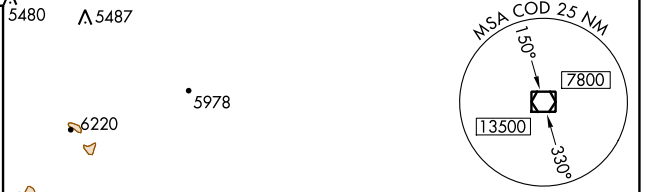
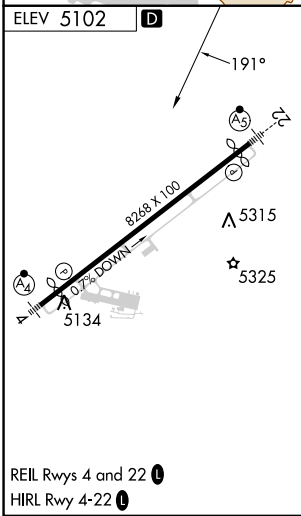
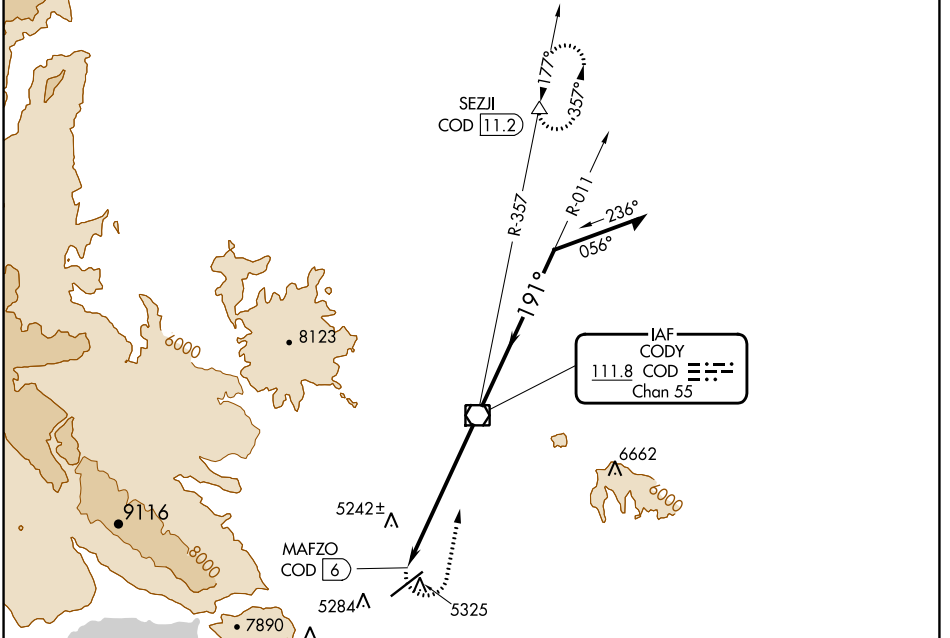
VOR-A

YELLOWSTONE RGNL (COD)

DME required.

MISSED APPROACH: Climbing left turn to 8400 direct COD VOR/DME and on COD VOR/DME R-357 to SEZJI/COD 11.2 DME and hold.

AWOS-3PT 135.075	SALT LAKE CENTER 127.75 351.9	UNICOM 122.8 (CTAF)
----------------------------	-----------------------------------------	-------------------------------



CATEGORY	A	B	C	D
CIRCLING	5780-1 678 (700-1)	5920-1¼ 818 (900-1¼)	5940-2½ 838 (900-2½)	6940-3 1838 (1900-3)

CODY, WYOMING
Amdt 9 26MAR20

44°31'N-109°01'W

VOR-A

YELLOWSTONE RGNL (COD)

NW-1, 22 FEB 2024 to 21 MAR 2024

NW-1, 22 FEB 2024 to 21 MAR 2024