

WAAS CH <b>93922</b> <b>W17A</b>	APP CRS <b>172°</b>	Rwy Idg TDZE Apt Elev	<b>4305</b> <b>1616</b> <b>1616</b>
--	------------------------	-----------------------------	---

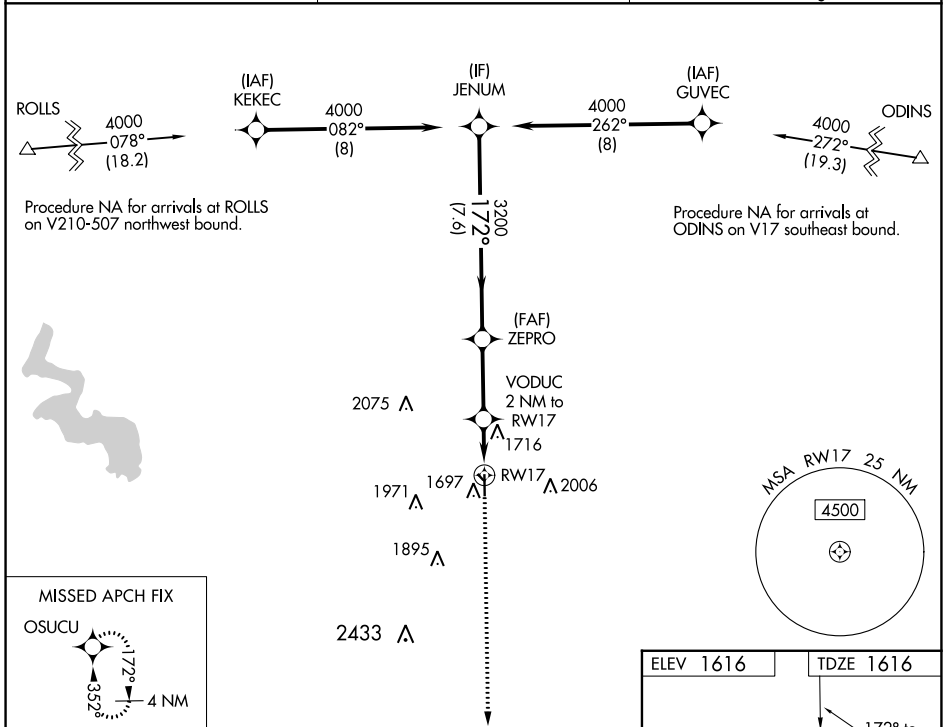
# RNAV (GPS) RWY 17

CLINTON RGNL (CLK)

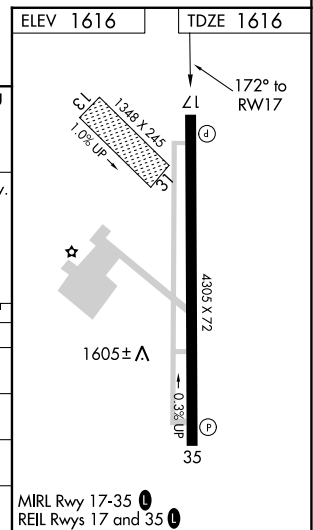
**⚠** DME/DME RNP-0.3 NA. For uncompensated Baro-VNAV systems, LNAV/VNAV NA below -12°C (11°F) or above 54°C (130°F). Circling NA to Rwy 13 and 31. When local altimeter setting not received, use Weatherford altimeter setting; Increase DA to 1898 and all visibilities ½ mile; increase all MDA 40 feet and visibility Cat C ¼ mile. Baro-VNAV and VDP NA when using Weatherford altimeter setting.

MISSED APPROACH: Climb to 4000 direct OSUCU and hold.

AWOS-3 <b>119.225</b>	FORT WORTH CENTER <b>128.4 269.37</b>	UNICOM <b>122.8 (CTAF) 0</b>
--------------------------	--	---------------------------------



JENUM		ZEPRO		VODUC 2 NM to RW17		OSUCU	
4000		3200		2280		4000	
172°		3200		*1 NM to RW17		*LNAV only.	
GP 3.00° TCH 40		7.6 NM		2.9 NM		1 NM	
CATEGORY	A	B	C	D			
LPV DA	1866-7/8	250 (300-7/8)					
LNAV/VNAV DA	1866-7/8	250 (300-7/8)					
LNAV MDA	1980-1	364 (400-1)					
CIRCLING	2100-1 484 (500-1)	2220-1 604 (700-1)	2320-2 704 (800-2)	NA			



SC-1, 22 FEB 2024 to 21 MAR 2024

SC-1, 22 FEB 2024 to 21 MAR 2024

WAAS CH <b>70423</b> <b>W35A</b>	APP CRS <b>352°</b>	Rwy Idg <b>4305</b> TDZE <b>1616</b> Apt Elev <b>1616</b>
--	------------------------	---

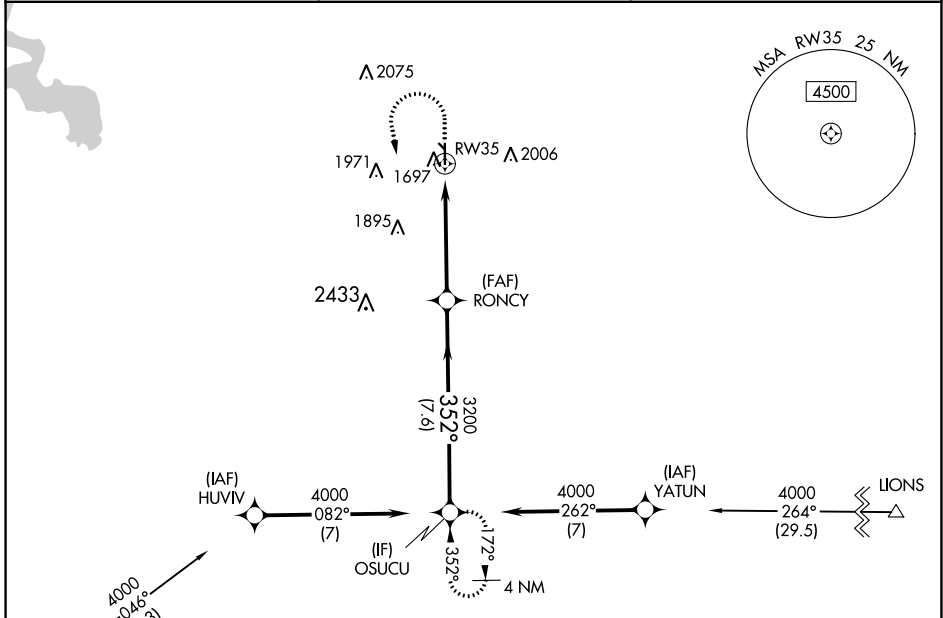
# RNAV (GPS) RWY 35

CLINTON RGNL (CLK)

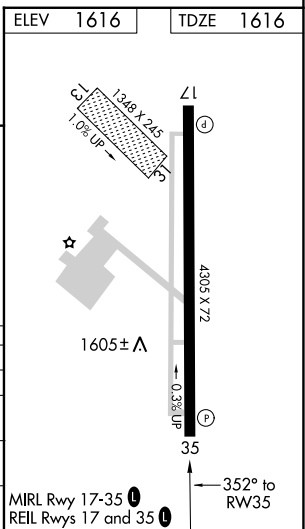
**⚠** DME/DME RNP-0.3 NA. For uncompensated Baro-VNAV systems, LNAV/VNAV NA below -12°C (11°F) or above 54°C (130°F). Circling NA to Rwy 13 and 31. When local altimeter setting not received, use Weatherford altimeter setting; Increase DA to 1902 and all visibilities ½ mile; increase all MDA 40 feet and visibility Cat C ¼ mile. Baro-VNAV and VDP NA when using Weatherford altimeter setting.

**MISSED APPROACH:** Climb to 2400 then climbing left turn to 4000 direct OSUCU and hold.

AWOS-3 <b>119.225</b>	FORT WORTH CENTER <b>128.4 269.37</b>	UNICOM <b>122.8 (CTAF) 0</b>
--------------------------	--	---------------------------------



ELEV 1616	TDZE 1616			
2400	4000	OSUCU	VGSI and RNAV glidepath not coincident (VGSI Angle 3.00/TCH 40).	OSUCU
<p>*LNAV only. <math>\uparrow</math> 1.3 NM to RW35</p> <p>RONCY 3200 <math>\rightarrow</math> 352° <math>\rightarrow</math> 4000</p> <p>GP 3.00° TCH 40</p> <p>1.3 NM    3.6 NM    7.6 NM</p>				
CATEGORY	A	B	C	D
LPV DA	1866-7/8	250 (300-7/8)		NA
LNAV/VNAV DA	1870-7/8	254 (300-7/8)		NA
LNAV MDA	2040-1	424 (500-1)	2040-1 1/4 424 (500-1 1/4)	NA
<b>C</b> CIRCLING	2100-1 484 (500-1)	2220-1 604 (700-1)	2320-2 704 (800-2)	NA



SC-1, 22 FEB 2024 to 21 MAR 2024

SC-1, 22 FEB 2024 to 21 MAR 2024