

WAAS CH <b>42816</b> <b>W14A</b>	APP CRS <b>139°</b>	Rwy Idg TDZE Apt Elev	<b>4599</b> <b>822</b> <b>826</b>
--	------------------------	-----------------------------	---

# RNAV (GPS) RWY 14

CLINTONVILLE MUNI (CLI)

RNP APCH.

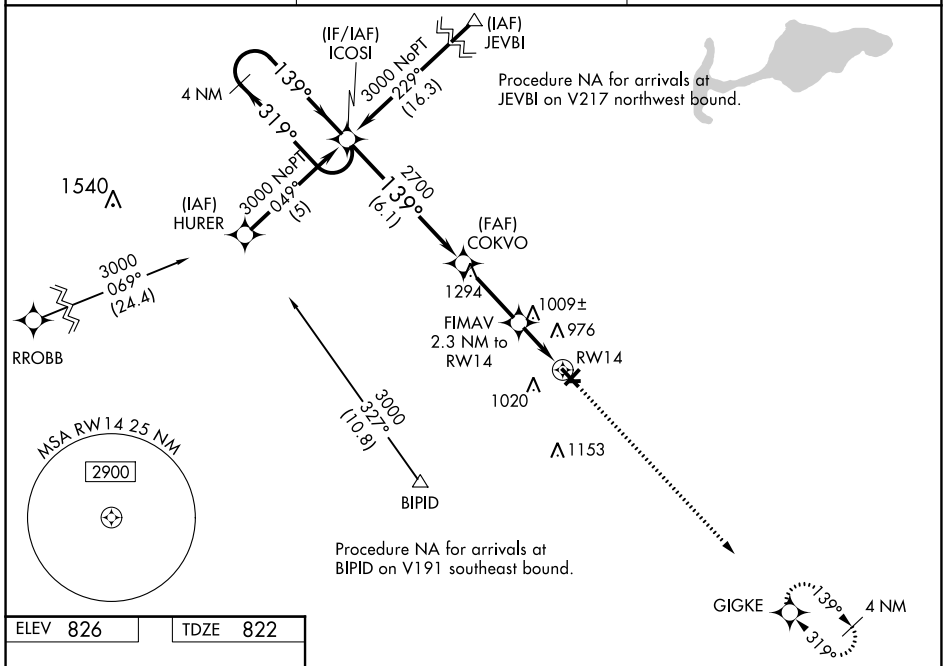
For uncompensated Baro-VNAV systems, LNAV/VNAV NA below -16°C or above 54°C.  
 Circling NA to Rwy 9 and 27. Straight-in Rwy 14 NA at night, Circling Rwy 14 NA at night.  
 Rwy 14 helicopter visibility below 1 SM NA.

MISSED APPROACH:  
 Climb to 3000 direct  
 GIGKE and hold.

AWOS-3  
**120.675**

GREEN BAY APP CON ★  
**126.3 338.2**

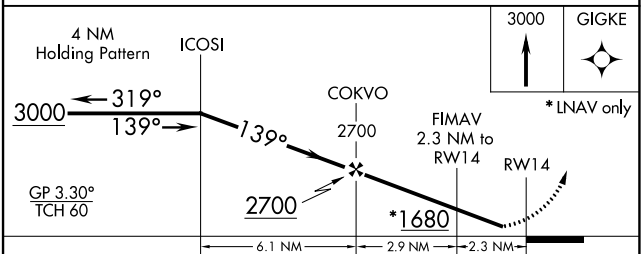
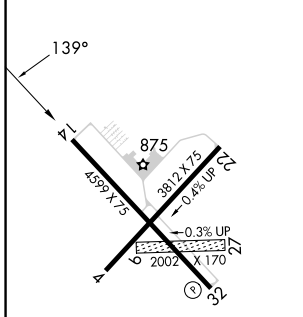
UNICOM  
**122.8 (CTAF) ①**



EC-3, 22 FEB 2024 to 21 MAR 2024

EC-3, 22 FEB 2024 to 21 MAR 2024

ELEV 826	TDZE 822
----------	----------



CATEGORY	A	B	C	D
LPV DA	1101-1	279 (300-1)		NA
LNAV/VNAV DA	1329-1½	507 (600-1½)		NA
LNAV MDA	1260-1	438 (500-1)		NA
<b>C</b> CIRCLING	1340-1	514 (600-1)		NA

WAAS CH <b>40316</b> <b>W22A</b>	APP CRS <b>225°</b>	Rwy Idg <b>3812</b> TDZE <b>821</b> Apt Elev <b>822</b>
--	------------------------	---

# RNAV (GPS) RWY 22

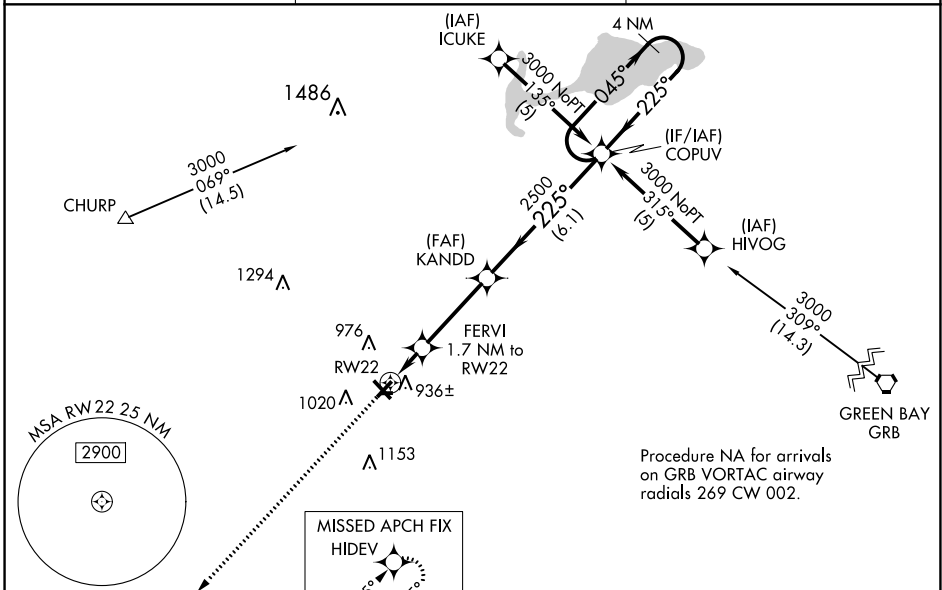
CLINTONVILLE MUNI (CLI)

RNP APCH.

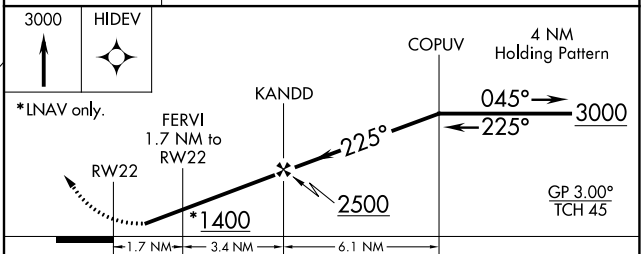
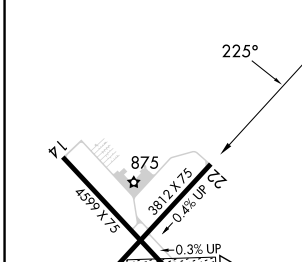
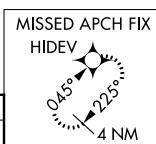
Baro-VNAV NA when using Green Bay altimeter setting. For uncompensated Baro-VNAV systems, LNAV/VNAV NA below -16°C or above 54°C. When local altimeter setting not received, use Green Bay altimeter setting and increase all DA/MDA 80 feet. Increase LPV visibility 3/8 SM all Cats and LNAV/VNAV visibility 1/4 SM all Cats. Circling NA to Rwy 9 and 27. Circling Rwy 14 NA at night. Rwy 22 helicopter visibility reduction below 3/4 SM NA.

MISSED APPROACH:  
Climb to 3000 direct HIDEV and hold.

AWOS-3 <b>120.675</b>	GREEN BAY APP CON ★ <b>126.3 338.2</b>	UNICOM <b>122.8 (CTAF) ①</b>
--------------------------	---	---------------------------------



ELEV 822	TDZE 821
----------	----------



CATEGORY	A	B	C	D
LPV DA	1183-1	362 (400-1)		NA
LNAV/VNAV DA	1236-1 1/8	415 (500-1 1/8)		NA
LNAV MDA	1220-1	399 (400-1)		NA
CIRCLING	1340-1	518 (600-1)		NA

REIL Rwy 32 ①  
MIRL Rwy 4-22 and 14-32 ①

EC-3, 22 FEB 2024 to 21 MAR 2024

EC-3, 22 FEB 2024 to 21 MAR 2024

WAAS CH <b>42740</b> <b>W32A</b>	APP CRS <b>319°</b>	Rwy Idg TDZE Apt Elev	<b>4599</b> <b>821</b> <b>826</b>
--	------------------------	-----------------------------	---

# RNAV (GPS) RWY 32

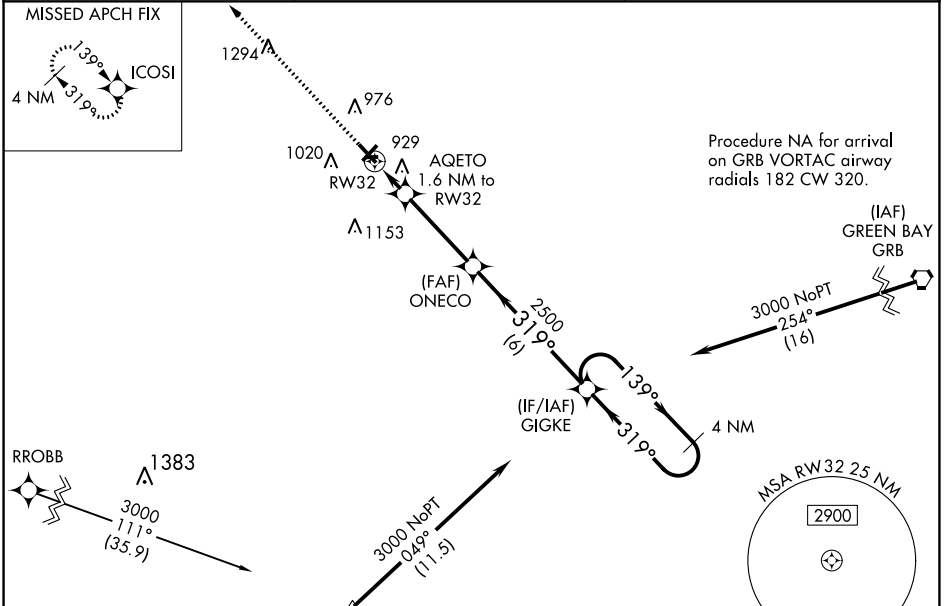
CLINTONVILLE MUNI (CLI)

RNP APCH.

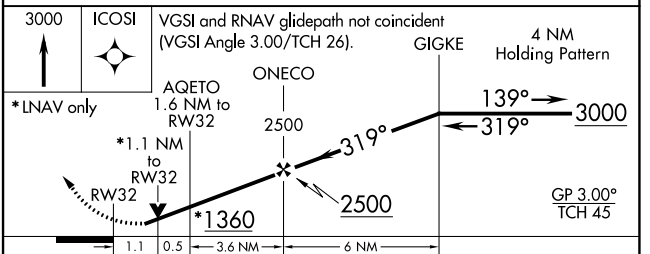
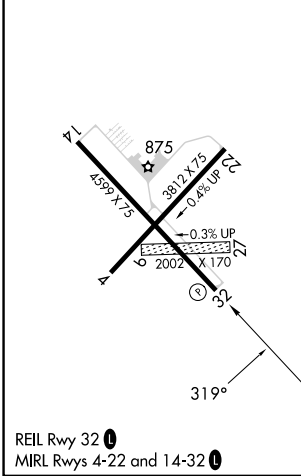
▼ For uncompensated Baro-VNAV systems, LNAV/VNAV NA below -16°C or above 54°C. Rwy 32 helicopter visibility reduction below ¼ SM NA. Circling Rwy 14 NA at night. Circling NA to Rwys 9 and 27.

MISSED APPROACH:  
Climb to 3000 direct  
ICSI and hold.

AWOS-3 <b>120.675</b>	GREEN BAY APP CON ★ <b>126.3 338.2</b>	UNICOM <b>122.8 (CTAF) ①</b>
--------------------------	---	---------------------------------



ELEV 826	TDZE 821
----------	----------



CATEGORY	A	B	C	D
LPV DA	1071-7/8	250 (300-7/8)		NA
LNAV/VNAV DA	1209-1 1/8	388 (400-1 1/8)		NA
LNAV MDA	1180-1	359 (400-1)		NA
<b>C</b> CIRCLING	1340-1	514 (600-1)		NA

EC-3, 22 FEB 2024 to 21 MAR 2024

EC-3, 22 FEB 2024 to 21 MAR 2024

WAAS CH <b>86516</b> <b>W04A</b>	APP CRS <b>045°</b>	Rwy Idg TDZE Apt Elev	<b>3812</b> <b>826</b> <b>826</b>
--	------------------------	-----------------------------	---

# RNAV (GPS) RWY 4

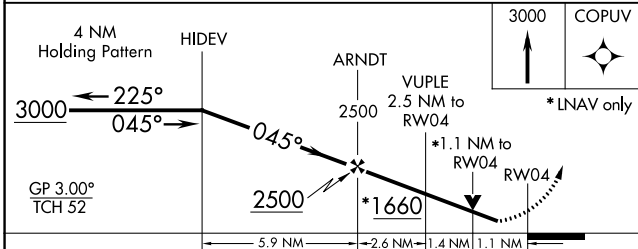
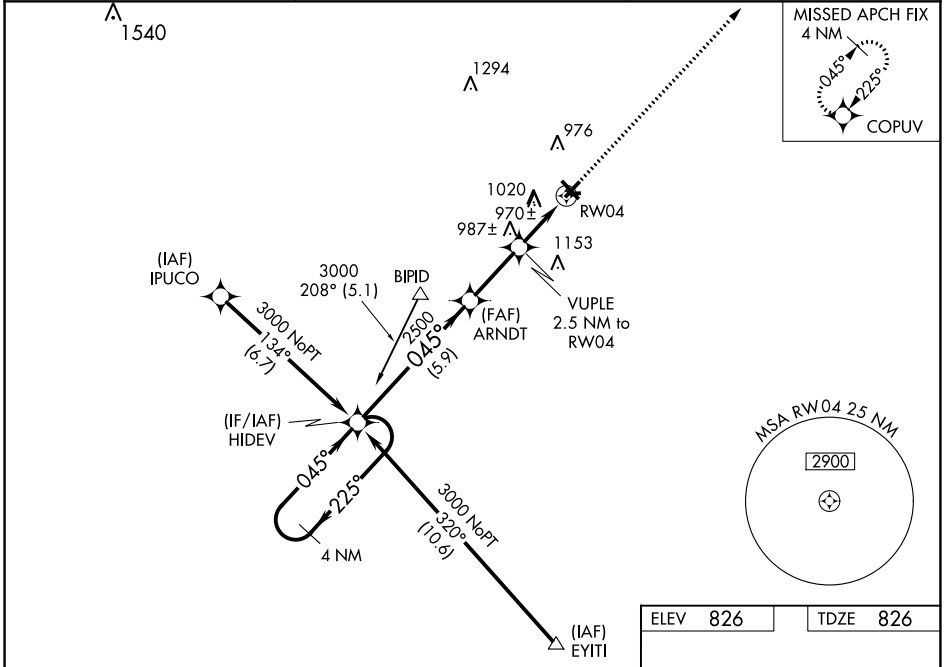
CLINTONVILLE MUNI (CLI)

RNP APCH.

▼ For uncompensated Baro-VNAV systems, LNAV/VNAV NA below -16°C or above 54°C. Rwy 4 helicopter visibility reduction below 3/4 SM NA. Circling Rwy 14 NA at night. Circling NA to Rwys 9 and 27.

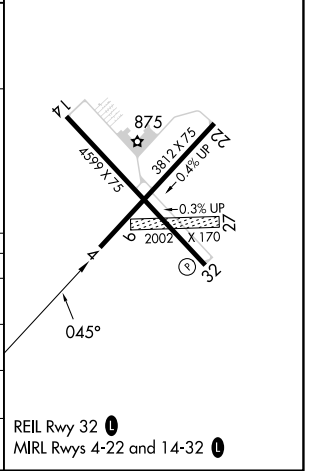
MISSED APPROACH:  
Climb to 3000 direct  
COPUV and hold.

AWOS-3 <b>120.675</b>	GREEN BAY APP CON ★ <b>126.3 338.2</b>	UNICOM <b>122.8 (CTAF) ①</b>
--------------------------	---	---------------------------------



ELEV 826	TDZE 826
----------	----------

CATEGORY	A	B	C	D
LPV DA	1076-1	250 (300-1)		NA
LNAV/VNAV DA	1229-1 3/8	403 (500-1 3/8)		NA
LNAV MDA	1220-1	394 (400-1)		NA
CIRCLING	1340-1	514 (600-1)		NA



EC-3, 22 FEB 2024 to 21 MAR 2024

EC-3, 22 FEB 2024 to 21 MAR 2024