

WAAS CH 50405 W25A	APP CRS 253°	Rwy Idg TDZE Apt Elev	5000 891 891
--	------------------------	-----------------------------	---

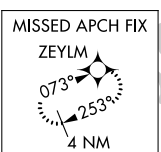
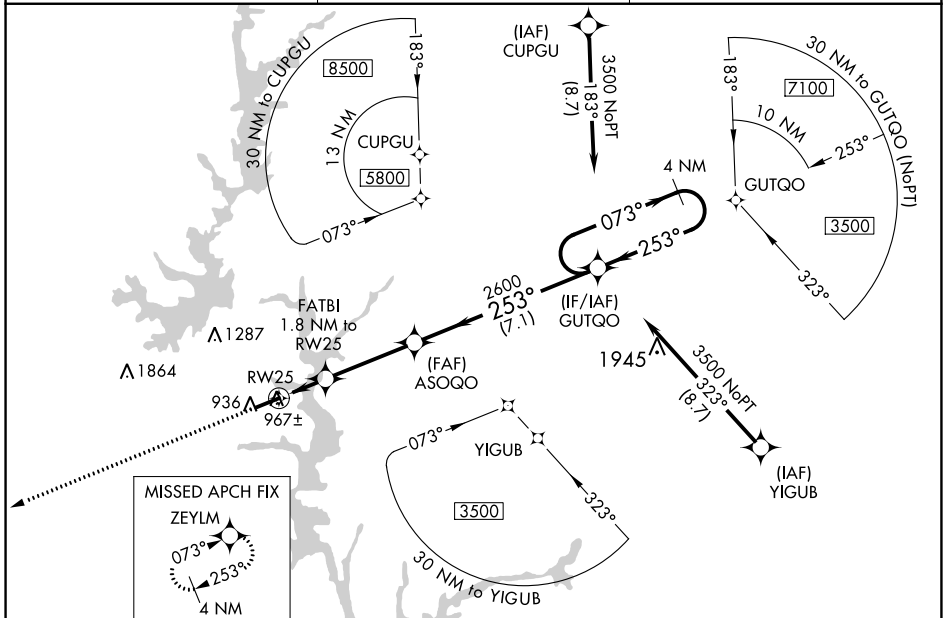
RNAV (GPS) RWY 25

OCONEE COUNTY RGNL (CEU)

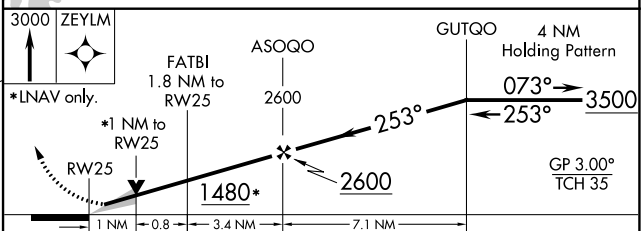
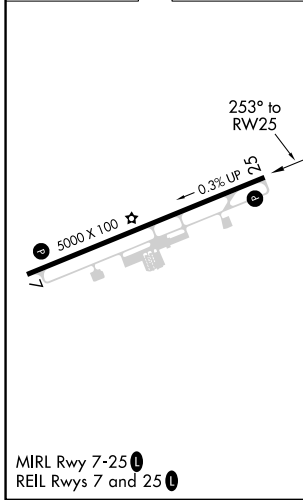
⚠ For uncompensated Baro-VNAV systems, LNAV/VNAV NA below -6°C (22°F) or above 54°C (130°F). DME/DME RNP-0.3 NA. When local altimeter setting not received, use Anderson altimeter setting and increase all DA 47 feet and all MDA 60 feet; increase LPV all Cats, and LNAV Cat C visibility 1/8 mile; increase LNAV/VNAV all Cats visibility 1/4 mile. Baro-VNAV and VDP NA when using Anderson altimeter setting.

MISSED APPROACH: Climb to 3000 direct ZEYLM and hold.

ASOS 119.275	GREER APP CON* 118.8 270.275	UNICOM 122.7 (CTAF) 0
------------------------	--	---------------------------------



ELEV 891	TDZE 891
----------	----------



	A	B	C	D
LPV DA	1091-3/4	200 (200-3/4)		NA
LNAV/VNAV DA	1141-7/8	250 (300-7/8)		NA
LNAV MDA	1220-1	329 (400-1)		NA
C CIRCLING	1300-1 409 (500-1)	1360-1 469 (500-1)	1640-2 1/4 749 (800-2 1/4)	NA

SE-2, 30 NOV 2023 to 28 DEC 2023

SE-2, 30 NOV 2023 to 28 DEC 2023

WAAS CH 97605 W07A	APP CRS 073°	Rwy Idg TDZE 891 Apt Elev 891	5000
--	------------------------	---	-------------

RNAV (GPS) RWY 7

OCONEE COUNTY RGNL (CEU)

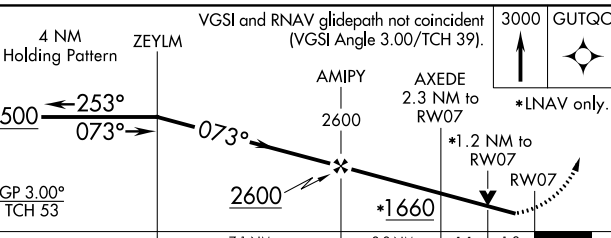
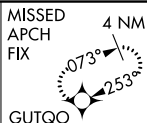
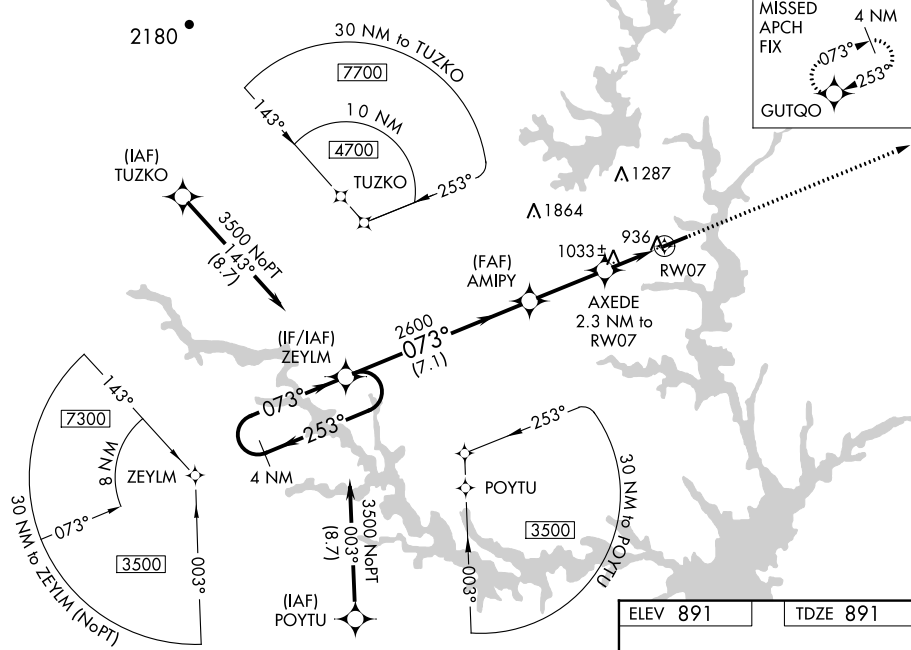
⚠ Baro-VNAV NA when using Anderson altimeter setting. For uncompensated Baro-VNAV systems, LNAV/VNAV NA below -6°C (22°F) or above 54°C (130°F). DME/DME RNP-0.3 NA.
⚠ When local altimeter setting not received, use Anderson altimeter setting and increase all DA 47 feet and all MDA 60 feet; increase LPV and LNAV/VNAV Cats A and B, and LNAV Cat C visibility ¼ mile. Helicopter visibility reduction below ¼ SM NA.

MISSED APPROACH:
Climb to 3000 direct GUTQO and hold.

ASOS
119.275

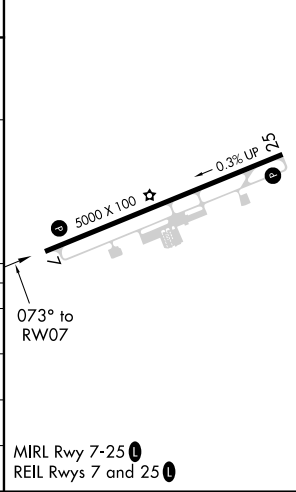
GREER APP CON ★
118.8 270.275

UNICOM
122.7 [CTAF] 0



ELEV 891	TDZE 891
----------	----------

CATEGORY	A	B	C	D
LPV DA	1146-¾	255 (300-¾)	1146-1 255 (300-1)	NA
LNAV/VNAV DA	1144-¾	253 (300-¾)	1144-1 253 (300-1)	NA
LNAV MDA	1300-1	409 (500-1)	1300-1½ 409 (500-1½)	NA
C CIRCLING	1300-1 409 (500-1)	1360-1 469 (500-1)	1640-2½ 749 (800-2½)	NA



SE-2, 30 NOV 2023 to 28 DEC 2023

SE-2, 30 NOV 2023 to 28 DEC 2023