

WAAS CH 53500 W11A	APP CRS 110°	Rwy Idg 5480 TDZE 145 Apt Elev 145
----------------------------------------	------------------------	---------------------------------------------------------------

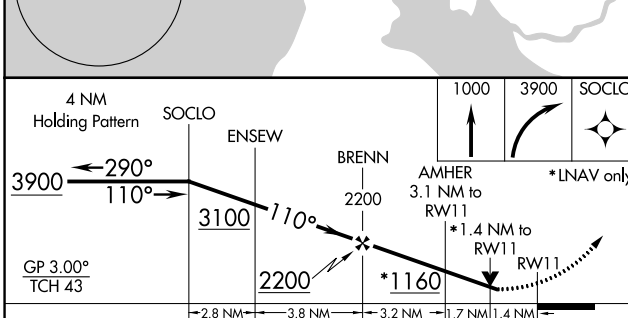
RNAV (GPS) RWY 11

SKAGIT RGNL (BVS)

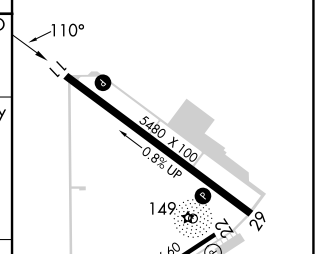
⚠ Circling to Rwy 04 NA at night. For uncompensated Baro-VNAV systems, LNAV/VNAV NA below -15°C (5°F) or above 54°C (130°F). Baro-VNAV and VDP NA when using Friday Harbor altimeter setting. DME/DME RNP-0.3 NA. When local altimeter setting not received use Friday Harbor altimeter setting: increase LPV DA to 561 feet, LNAV/VNAV DA to 710 feet and all Cats visibilities ¼ SM; increase all MDA 60 feet and Cats C and D visibility ¼ SM. Helicopter visibility reduction below ¾ SM NA.

MISSED APPROACH: Climb to 1000 then climbing right turn to 3900 direct SOCLO and hold, continue climb-in-hold to 3900.

AWOS-3 121.125	WHIDBEY APP CON 120.7 270.8	UNICOM 123.075 (CTAF)
--------------------------	---------------------------------------	---------------------------------



ELEV 145	TDZE 145
----------	----------



CATEGORY	A	B	C	D
LPV DA		500-1¼	355 (400-1¼)	
LNAV/VNAV DA		649-1¾	504 (600-1¾)	
LNAV MDA	620-1	475 (500-1)	620-1¾ 475 (500-1¾)	700-1⅝ 555 (600-1⅝)
CIRCLING	680-1 535 (600-1)	700-1 555 (600-1)	700-1½ 555 (600-1½)	1000-2¾ 855 (900-2¾)

LURL Rwy 4-22
REIL Rws 11 and 29
MIRL Rwy 11-29

NW-1, 30 NOV 2023 to 28 DEC 2023

NW-1, 30 NOV 2023 to 28 DEC 2023

WAAS CH 70407 W29A	APP CRS 291°	Rwy Idg TDZE Apt Elev	5480 127 145
----------------------------------------	------------------------	-----------------------------	-----------------------------------------

RNAV (GPS) RWY 29

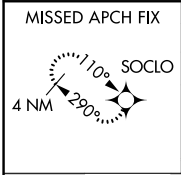
SKAGIT RGNL (BVS)

RNP APCH.

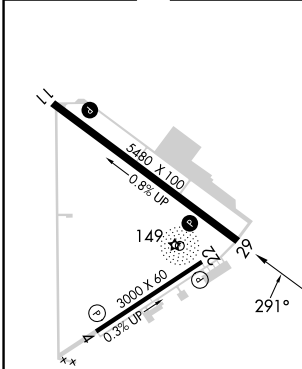
▼ For uncompensated Baro-VNAV systems, LNAV/VNAV NA below -15°C or above 54°C.
▲ Baro-VNAV and VDP NA when using Friday Harbor altimeter setting. When local altimeter setting not received use Friday Harbor altimeter setting; increase LPV DA to 438 feet, LNAV/VNAV DA to 536 feet and all Cats visibility ¼ SM; increase all MDA 60 feet.

MISSED APPROACH: Climb to 4000 direct SOCLO and hold, continue climb-in-hold to 4000.

AWOS-3 121.125	WHIDBEY APP CON 120.7 270.8	UNICOM 123.075 (CTAF)
--------------------------	---------------------------------------	---------------------------------



ELEV 145	TDZE 127
----------	----------



LIRL Rwy 4-22
 REIL Rws 11 and 29
 MIRL Rwy 11-29

4000	SOCLO					
*LNAV only	RW29	ECARI 4.6 NM to RW29	TOKSE 7.1 NM to RW29	OPIXE 3000	ENNGL 3000	KIREC 4300
	1.4 NM	3.2 NM	2.5 NM	1.9 NM	2.2 NM	2.3 NM
CATEGORY	A	B	C	D		
LPV DA	377-7/8		250 (300-7/8)			
LNAV/VNAV DA	475-1¼		348 (400-1¼)			
LNAV MDA	580-1	453 (500-1)	580-1¾	453 (500-1¾)		

NW-1, 30 NOV 2023 to 28 DEC 2023

NW-1, 30 NOV 2023 to 28 DEC 2023