

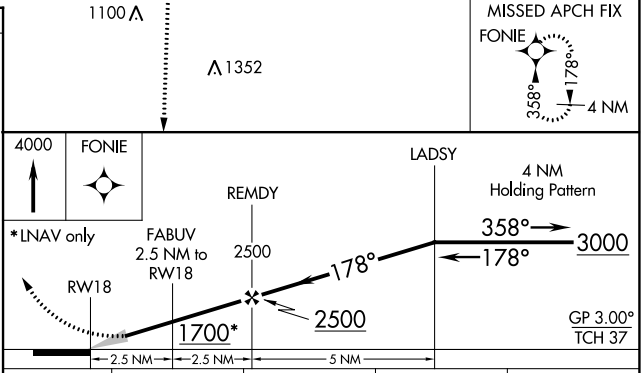
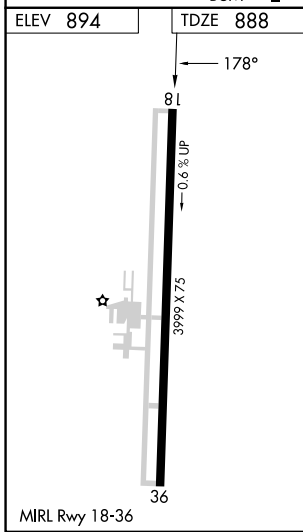
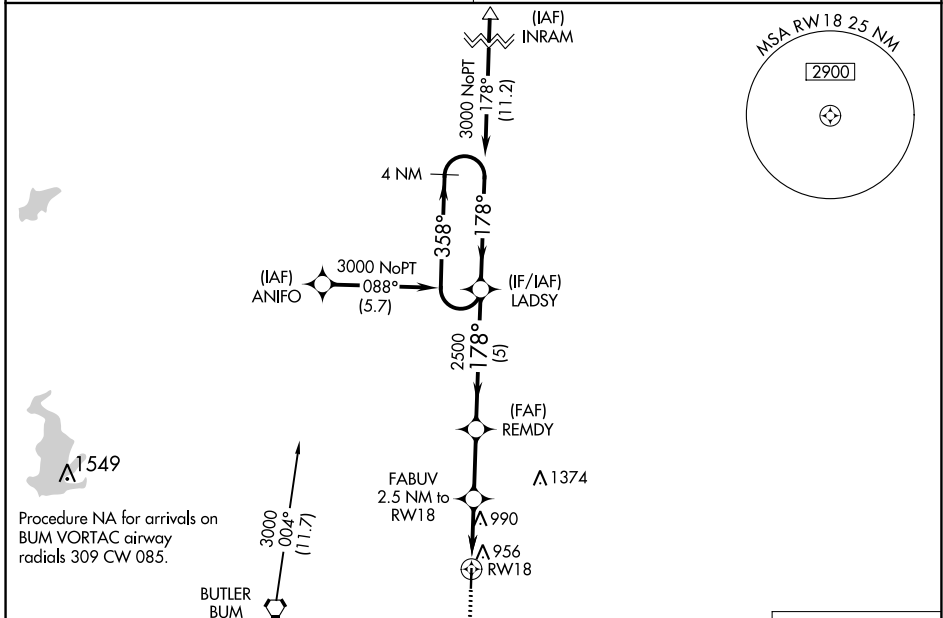
WAAS CH <b>82630</b> <b>W18A</b>	APP CRS <b>178°</b>	Rwy Idg TDZE <b>888</b> Apt Elev <b>894</b>
--	------------------------	---

# RNAV (GPS) RWY 18

BUTLER MEML (BUM)

RNP APCH.	MISSED APPROACH: Climb to 4000 direct FONIE and hold, continue climb in hold to 4000.
<p>▼ Baro-VNAV NA. Use Clinton altimeter setting; when not received, use Charles B Wheeler Downtown altimeter setting and increase all DA/MDA 60 feet, increase LPV and LNAV/VNAV all Cats visibility ¼ mile.</p> <p>▲ NA</p>	

KANSAS CITY CENTER <b>125.55 327.0</b>	CTAF <b>122.9</b>
---	----------------------



CATEGORY	A	B	C	D
LPV DA	1220-1½	332 (400-1½)		NA
LNAV/VNAV DA	1220-1½	332 (400-1½)		NA
LNAV MDA	1340-1	452 (500-1)		NA

NC-3, 22 FEB 2024 to 21 MAR 2024

NC-3, 22 FEB 2024 to 21 MAR 2024

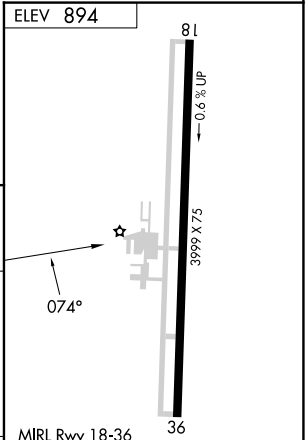
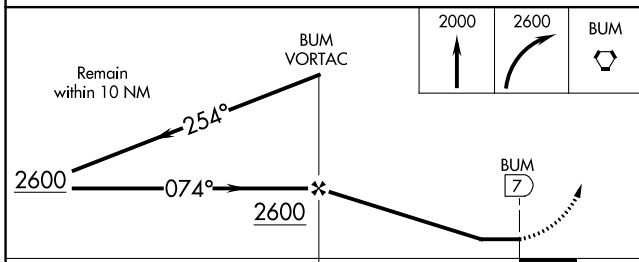
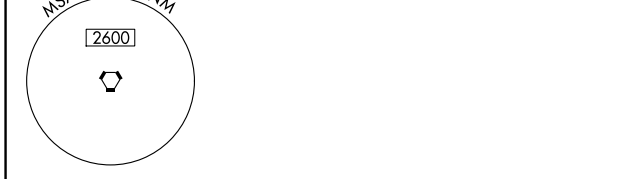
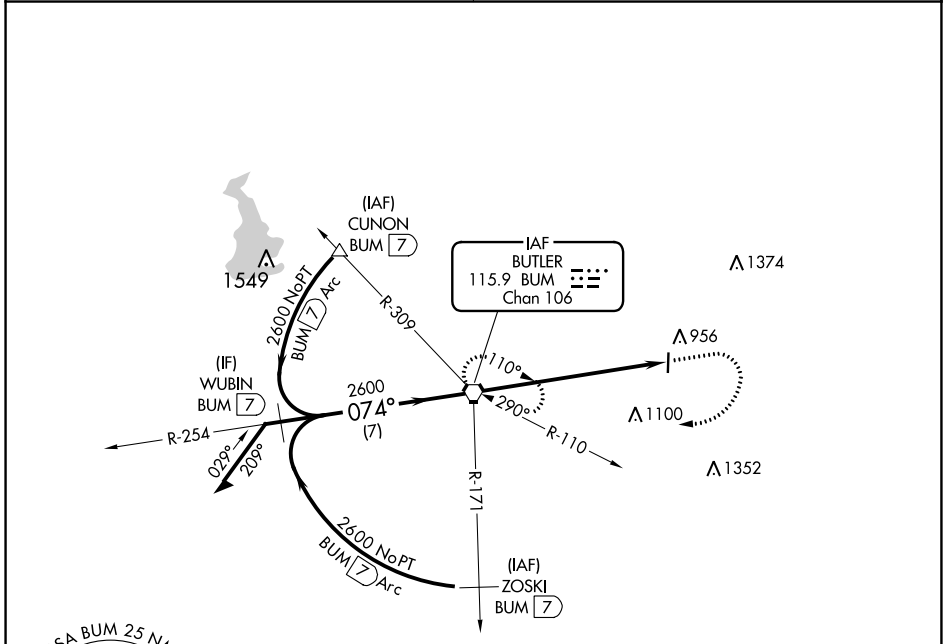


VORTAC BUM <b>115.9</b> Chan <b>106</b>	APP CRS <b>074°</b>	Rwy Idg TDZE Apt Elev	<b>N/A</b> <b>N/A</b> <b>894</b>
---	------------------------	-----------------------------	--

**VOR-A**  
BUTLER MEML (BUM)

**▼** Use Clinton altimeter setting; when not received, use Charles B Wheeler Downtown altimeter setting and increase all MDA 60 feet.  
**▲ NA** MISSED APPROACH: Climb to 2000 then climbing right turn to 2600 direct BUM VORTAC and hold.

KANSAS CITY CENTER <b>125.55 327.0</b>	CTAF <b>122.9</b>
---	----------------------



CATEGORY	A	B	C	D	FAF to MAP 7 NM					
<b>☐</b> CIRCLING	1480-1 586 (600-1)	1520-1 626 (700-1)		NA	Knots	60	90	120	150	180
					Min:Sec	7:00	4:40	3:30	2:48	2:20