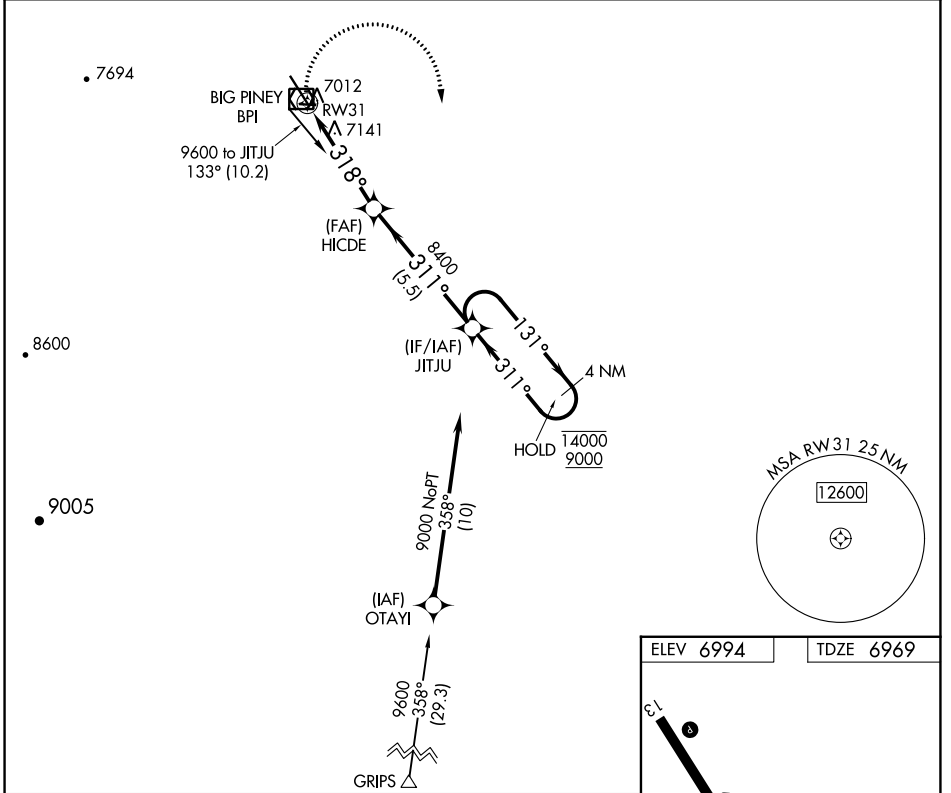


APP CRS	Rwy Idg	<b>6803</b>
<b>318°</b>	TDZE	<b>6969</b>
	Apt Elev	<b>6994</b>

# RNAV (GPS) RWY 31

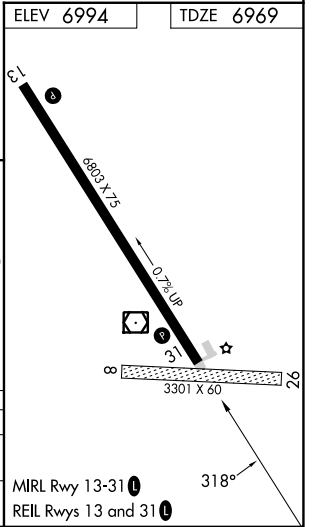
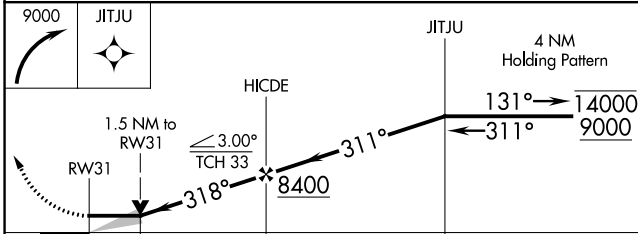
MILEY MEML FLD (BPI)

RNP APCH - GPS.		MISSED APPROACH: Climbing right turn to 9000 direct JITJU and hold.	
Circling NA to Rws 8 and 26.		ASOS	SALT LAKE CENTER
<b>135.225</b>	<b>128.35 239.25</b>	UNICOM	<b>122.70</b>
		<b>122.8 (CTAF)</b>	



NW-1, 22 FEB 2024 to 21 MAR 2024

NW-1, 22 FEB 2024 to 21 MAR 2024



CATEGORY	A	B	C	D
LNVA MDA	7460-1	491 (500-1)	7460-1 $\frac{3}{8}$	491 (500-1 $\frac{1}{8}$ )
CIRCLING	7460-1 466 (500-1)	7560-1 566 (600-1)	7800-2 $\frac{1}{4}$ 806 (900-2 $\frac{1}{4}$ )	7820-2 $\frac{3}{4}$ 826 (900-2 $\frac{3}{4}$ )

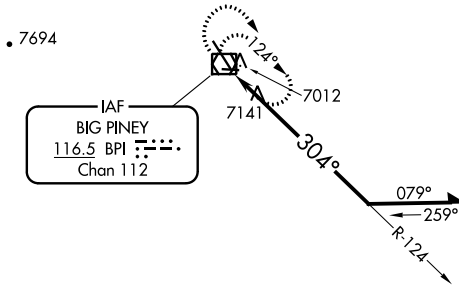
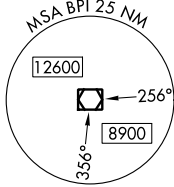
VOR/DME BPI <b>116.5</b> Chan <b>112</b>	APP CRS <b>304°</b>	Rwy Idg TDZE Apt Elev <b>6803</b> <b>6969</b> <b>6994</b>
--	------------------------	--

# VOR RWY 31

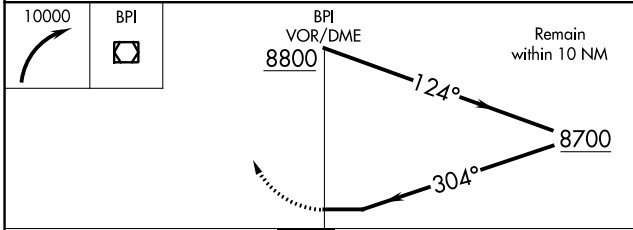
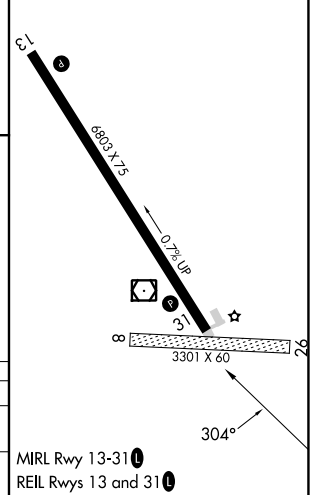
MILEY MEML FLD (BPI)

<b>NA</b>	Circling NA to Rwy 8 and 26.	MISSED APPROACH: Climbing right turn to 10000 in BPI VOR/DME holding pattern.
-----------	------------------------------	---

ASOS <b>135.225</b>	SALT LAKE CENTER <b>128.35 239.25</b>	UNICOM <b>122.8</b> (CTAF)	<b>122.70</b>
------------------------	--	-------------------------------	---------------



ELEV 6994	TDZE 6969
-----------	-----------



CATEGORY	A	B	C	D
S-31	7680-1	711 (700-1)	7680-2	711 (700-2)
CIRCLING	7680-1	686 (700-1)	7800-2¼ 806 (900-2¼)	7820-2¾ 826 (900-2¾)

NW-1, 22 FEB 2024 to 21 MAR 2024

NW-1, 22 FEB 2024 to 21 MAR 2024