

APP CRS	Rwy Idg	7345
144°	TDZE	119
	Apt Elev	153

RNAV (GPS) RWY 14

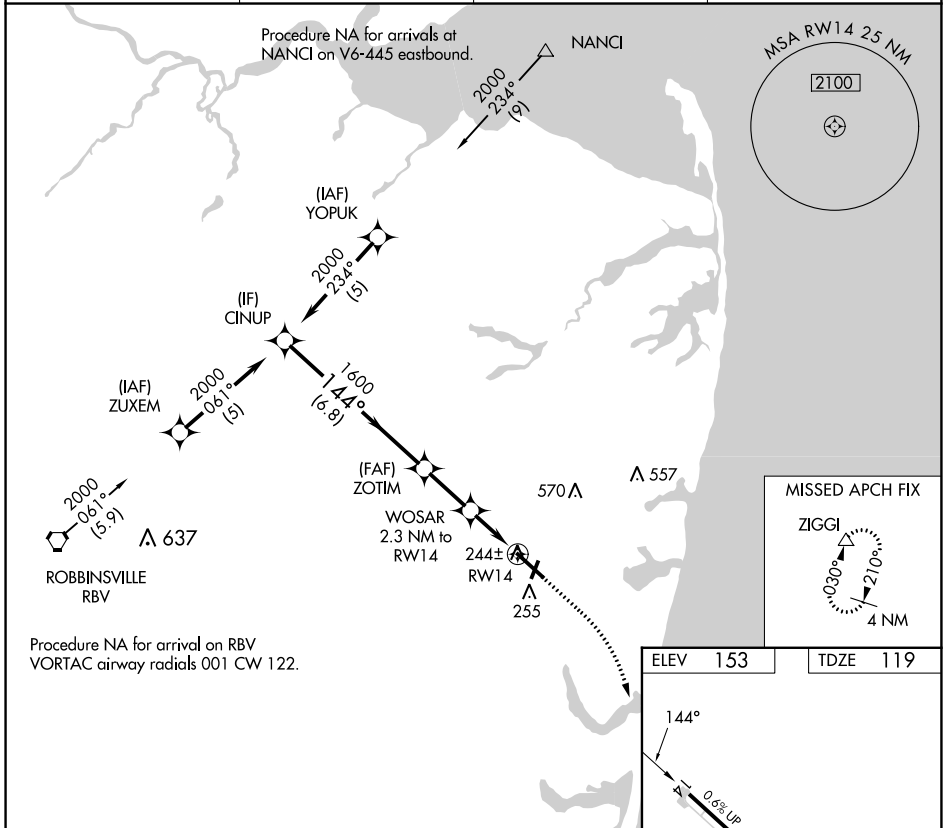
MONMOUTH EXEC (BLM)

RNP APCH.

▼ Circling Rwy 3, 21 NA at night. Rwy 14 helicopter visibility reduction below 3/4 SM NA.
▲ VDP NA when using Lakehurst altimeter setting. When local altimeter setting not received, use Lakehurst altimeter setting; increase all MDA 40 feet and LNAV Cats C/D visibility 1/8 SM and Circling Cat C/D visibility 1/4 SM.

MISSED APPROACH:
 Climb to 600 then climbing right turn to 2000 direct ZIGGI and hold.

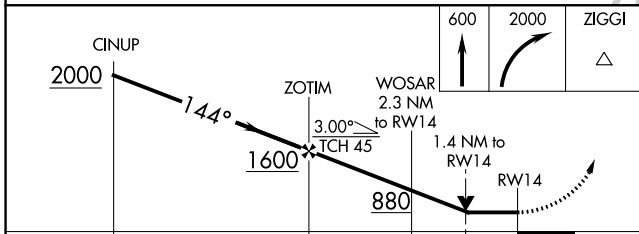
AWOS-3PT 121.625	MC GUIRE APP CON 126.475 363.8	CLNC DEL 126.15	UNICOM 123.0 (CTAF)
----------------------------	--	---------------------------	-------------------------------



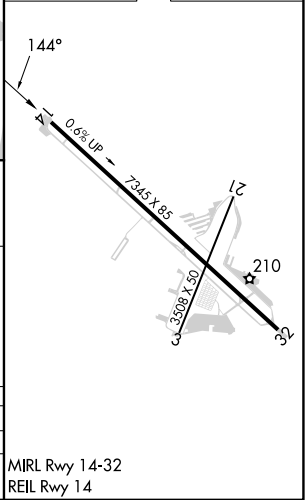
NE-2, 22 FEB 2024 to 21 MAR 2024

NE-2, 22 FEB 2024 to 21 MAR 2024

ELEV 153	TDZE 119
----------	----------



	6.8 NM		2.2 NM		0.9		1.4	
CATEGORY	A	B	C	D				
LNAV MDA	500-1	381 (400-1)	500-1 1/8	381 (400-1 1/8)				
CIRCLING	560-1 407 (500-1)	620-1 467 (500-1)	880-2 727 (800-2)	880-2 1/4 727 (800-2 1/4)				



APP CRS	Rwy Idg	7345
325°	TDZE	153
	Apt Elev	153

RNAV (GPS) RWY 32

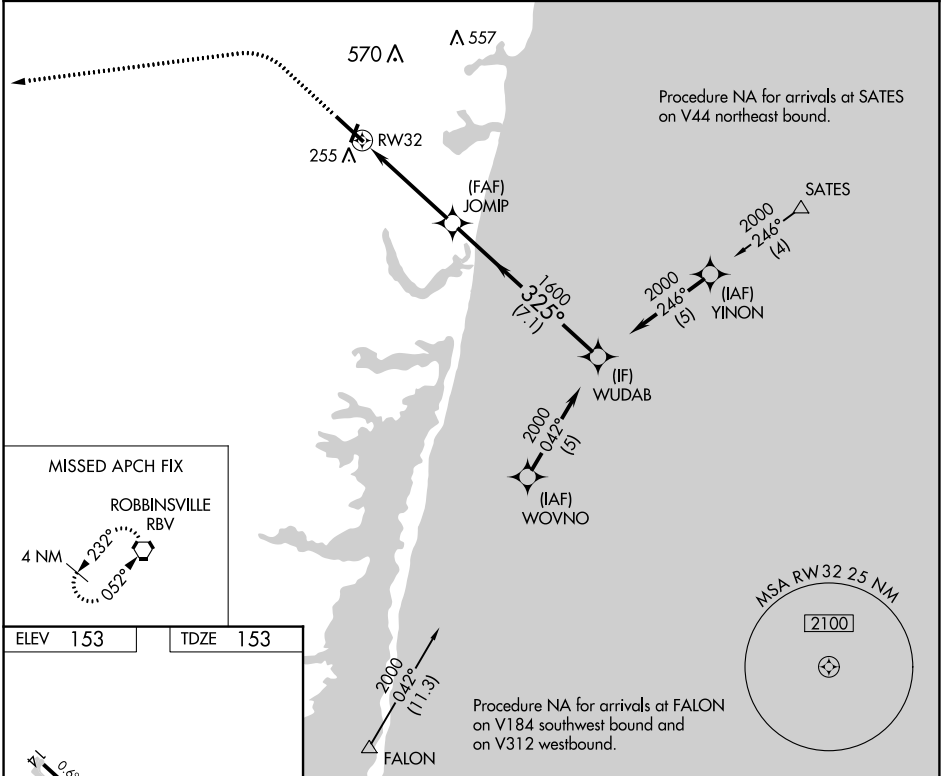
MONMOUTH EXEC (BLM)

RNP APCH.

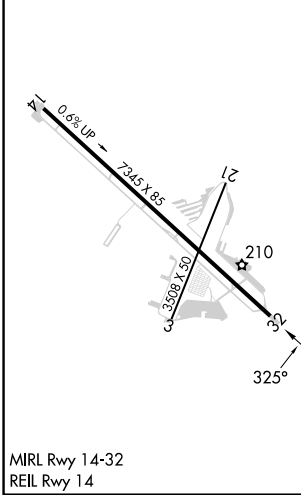
▼ Circling Rwy 3, 21 NA at night. Rwy 32 helicopter visibility reduction below 3/4 SM NA.
▲ When local altimeter setting not received, use Lakehurst altimeter setting and increase all MDA 40 feet; increase LNAV Cat C/D and Circling Cat C/D visibility 1/4 SM.

MISSED APPROACH:
 Climb to 600 then climbing left turn to 2000 direct RBV VORTAC and hold.

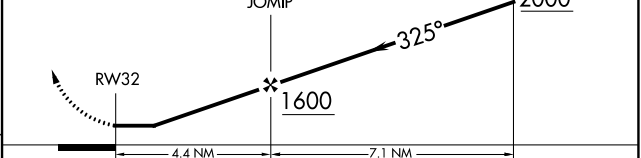
AWOS-3PT 121.625	MC GUIRE APP CON 126.475 363.8	CLNC DEL 126.15	UNICOM 123.0 (CTAF)
----------------------------	--	---------------------------	-------------------------------



ELEV 153	TDZE 153
----------	----------



600	2000	RBV	Visual Segment - Obstacles.
↑	↶	⬡	



CATEGORY	A	B	C	D
LNAV MDA	560-1	407 (500-1)	560-1 1/8	407 (500-1 1/8)
CIRCLING	560-1 407 (500-1)	620-1 467 (500-1)	880-2 727 (800-2)	880-2 1/4 727 (800-2 1/4)

NE-2, 22 FEB 2024 to 21 MAR 2024

NE-2, 22 FEB 2024 to 21 MAR 2024

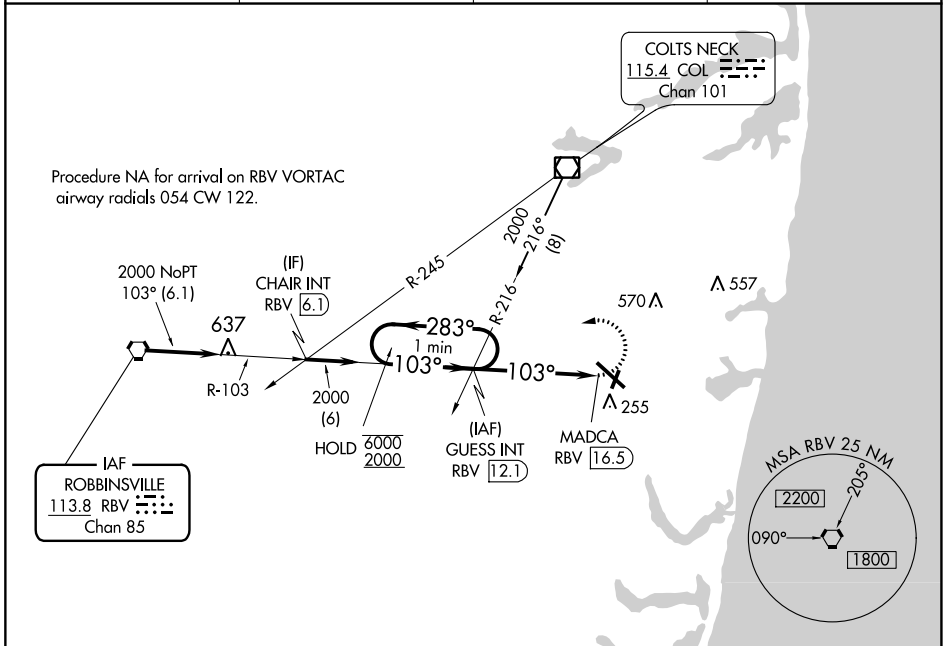
VORTAC RBV 113.8 Chan 85	APP CRS 103°	Rwy Idg TDZE Apt Elev	N/A N/A 153
--	------------------------	-----------------------------	--

VOR-A
MONMOUTH EXEC (BLM)

⚠ Circling Rwy 3, 21 NA at night. When local altimeter setting not received, use Lakehurst altimeter setting and increase all MDA 40 feet: increase Cat C/D visibility ¼ SM.

MISSED APPROACH: Climbing left turn to 2000 on RBV VORTAC R-103 to GUESS INT/RBV 12.1 DME and hold.

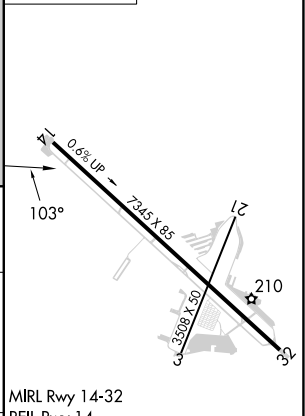
AWOS-3PT 121.625	MC GUIRE APP CON 126.475 363.8	CLNC DEL 126.15	UNICOM 123.0 (CTAF)
----------------------------	--	---------------------------	-------------------------------



NE-2, 22 FEB 2024 to 21 MAR 2024

NE-2, 22 FEB 2024 to 21 MAR 2024

ELEV 153



One Minute Holding Pattern	GUESS INT RBV (12.1)	2000 RBV R-103	GUESS INT
6000 ← 283°	2000 → 103°	MADCA RBV (16.5)	
		4.5 NM	

CATEGORY	A	B	C	D	FAF to MAP 4.5 NM												
CIRCLING	640-1	487 (500-1)	880-2 727 (800-2)	880-2¼ 727 (800-2¼)	<table border="1"> <tr> <td>Knots</td> <td>60</td> <td>90</td> <td>120</td> <td>150</td> <td>180</td> </tr> <tr> <td>Min:Sec</td> <td>4:30</td> <td>3:00</td> <td>2:15</td> <td>1:48</td> <td>1:30</td> </tr> </table>	Knots	60	90	120	150	180	Min:Sec	4:30	3:00	2:15	1:48	1:30
Knots	60	90	120	150	180												
Min:Sec	4:30	3:00	2:15	1:48	1:30												