

MARIC FOUR DEPARTURE

AL-36 (FAA)

MEADOWS FLD (BFL)
BAKERSFIELD, CALIFORNIA

**TOP ALTITUDE:
ASSIGNED BY ATC**

AVENAL
117.1 AVE :--
Chan 118

R-196

SHAFTER
115.4 EHF :--
Chan 101

ATIS 118.6
GND CON 121.7
BAKERSFIELD TOWER* 118.1 257.8
BAKERSFIELD DEP CON* 126.45 270.3 (NORTH)
126.45 284.625 (SOUTH)

NOTE: Approximate distance from takeoff area to MARIC for Rwy 12L/R and 30L/R.

R-109

MARIC
N35°14.26'
W119°16.18'

V183

L17

8000
* 4700
109°
(20)

R-100

NINETY
N35°02.83'-W118°56.69'
8800 for
GORMAN TRANSITION

TAKEOFF MINIMUMS

Rwy 12L/R, 30L/R:

Standard with minimum climb of 250' per NM to 8000.

62

V23

9800
* 9800
148°
(115)

9500
* 8000
125°
(28)

GORMAN
116.1 GMN :--
Chan 108
N34°48.24'-W118°51.68'
L-3-4-7, H-4

LAKE HUGHES
114.35 LHS :--
Chan 90 (Y)
N34°40.98'-W118°34.62'
L-3-4-7

R-305

NOTE: Chart not to scale.

DEPARTURE ROUTE DESCRIPTION

TAKEOFF RUNWAYS 12L/R: Turn right heading 240°. Thence. . .

TAKEOFF RUNWAYS 30L/R: Turn left heading 240°. Thence. . .

. . . intercept and proceed on the EHF R-196 to MARIC. Thence via (transition) or (assigned route).

GORMAN TRANSITION (MARIC4.GMN): From over MARIC via AVE R-109 and GMN R-328 to GMN VORTAC.

LAKE HUGHES TRANSITION (MARIC4.LHS): From over MARIC via AVE R-109 and LHS R-305 to LHS VORTAC.

MARIC FOUR DEPARTURE

OILDALE ONE DEPARTURE

AL-36 (FAA)

MEADOWS FLD (BFL)
BAKERSFIELD, CALIFORNIA

**TOP ALTITUDE:
ASSIGNED BY ATC**

RADAR required.

ATIS
118.6
GND CON
121.7
BAKERSFIELD TOWER*
118.1 257.8
BAKERSFIELD DEP CON*
126.45 270.3 (NORTH)
126.45 284.625 (SOUTH)

PANOUCHE
112.6 PXN
Chan 73
N36°42.93' - W120°46.72'
L-3, H-3

AVENAL
117.1 AVE
Chan 118
N35°38.82' - W119°58.72'
L-3-7, H-4

MORRO BAY
112.4 MQO
Chan 71
N35°15.14' - W120°45.57'
L-3-7, H-4

FELLOWS
117.5 FLW
Chan 122
N35°05.59' - W119°51.93'
L-3-7, H-4

GUADALUPE
113.05 GLJ
N34°57.14' - W120°31.29'
L-3-4-7

SAN MARCUS
114.9 RZS
Chan 96
N34°30.57' - W119°46.26'
L-3-4-7, H-4

GORMAN
116.1 GMN
Chan 108
N34°48.24' - W118°51.68'
L-3-4-7, H-4

FILLMORE
112.5 FIM
Chan 72
N34°21.40' - W118°52.88'
L-3-4-7, H-4

SHAFTER
115.4 EHF
Chan 101
N35°29.07' - W119°05.84'
L-3-7, H-4

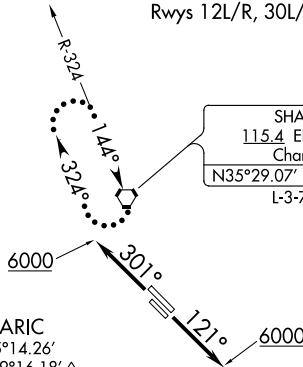
MARIC
N35°14.26' - W119°16.18'
L-3-7

AMONT
N35°11.03' - W118°45.32'
L-3-7, H-4

PALMDALE
115.55 PMD
Chan 102(Y)
N34°37.88' - W118°03.83'
L-3-4-7, H-4

LAKE HUGHES
114.35 LHS
Chan 90(Y)
N34°40.98' - W118°34.62'
L-3-4-7, H-4

TAKEOFF MINIMUMS
Rwys 12L/R, 30L/R: Standard.



NOTE: Chart not to scale.



DEPARTURE ROUTE DESCRIPTION

TAKEOFF RUNWAYS 12L/R: Climb on heading 121° to 6000 for vector to assigned route/fix. Thence. . .

TAKEOFF RUNWAYS 30L/R: Climb on heading 301° to 6000 for vector to assigned route/fix. Thence. . .

. . . maintain ATC assigned altitude. Expect clearance to requested altitude five minutes after departure.

LOST COMMUNICATIONS: If no radio contact for two minutes, proceed direct SHAFTER VORTAC and hold. Climb in holding pattern to expected altitude prior to proceeding on course.

OILDALE ONE DEPARTURE

(WRING4.WRING) 22083

WRING FOUR DEPARTURE

AL-36 (FAA)

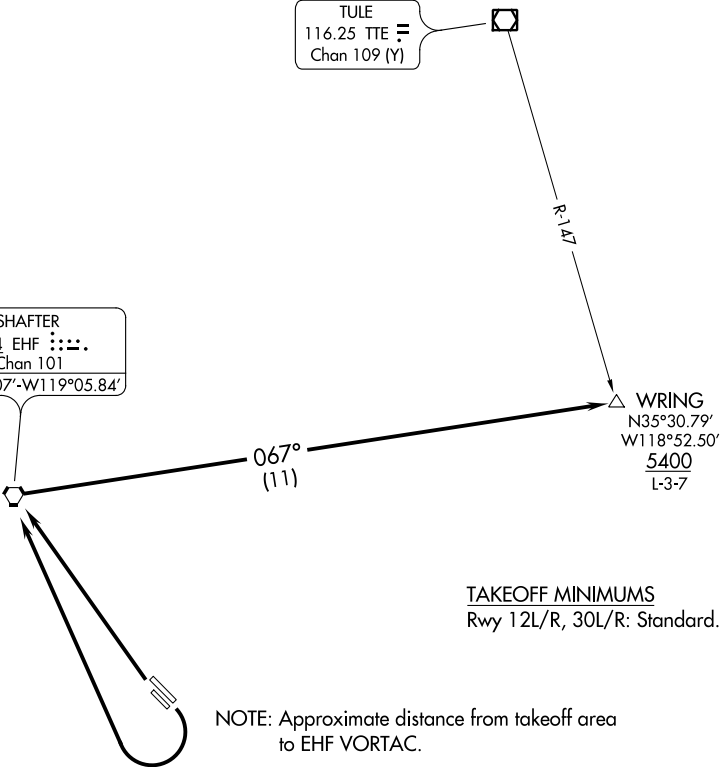
MEADOWS FLD (BFL)
BAKERSFIELD, CALIFORNIA

ATIS
118.6
GND CON
121.7
BAKERSFIELD TOWER *
118.1 257.8
BAKERSFIELD DEP CON *
126.45 270.3 (NORTH)
126.45 284.625 (SOUTH)

**TOP ALTITUDE:
ASSIGNED BY ATC**

TULE
116.25 TTE =
Chan 109 (Y)

SHAFTER
115.4 EHF :...:
Chan 101
N35°29.07'-W119°05.84'



TAKEOFF MINIMUMS
Rwy 12L/R, 30L/R: Standard.

NOTE: Approximate distance from takeoff area to EHF VORTAC.

NOTE: Chart not to scale.



DEPARTURE ROUTE DESCRIPTION

TAKEOFF RUNWAYS 12L/R: Climbing right turn direct EHF VORTAC. Thence. . . .

TAKEOFF RUNWAYS 30L/R: Climb direct EHF VORTAC. Thence. . . .

. . . .From over EHF VORTAC via EHF R-067 to cross WRING at or above 5400. Thence via (assigned route).

WRING FOUR DEPARTURE

(WRING4.WRING) 26MAY16

BAKERSFIELD, CALIFORNIA
MEADOWS FLD (BFL)

SW-3, 05 OCT 2023 to 02 NOV 2023

SW-3, 05 OCT 2023 to 02 NOV 2023