

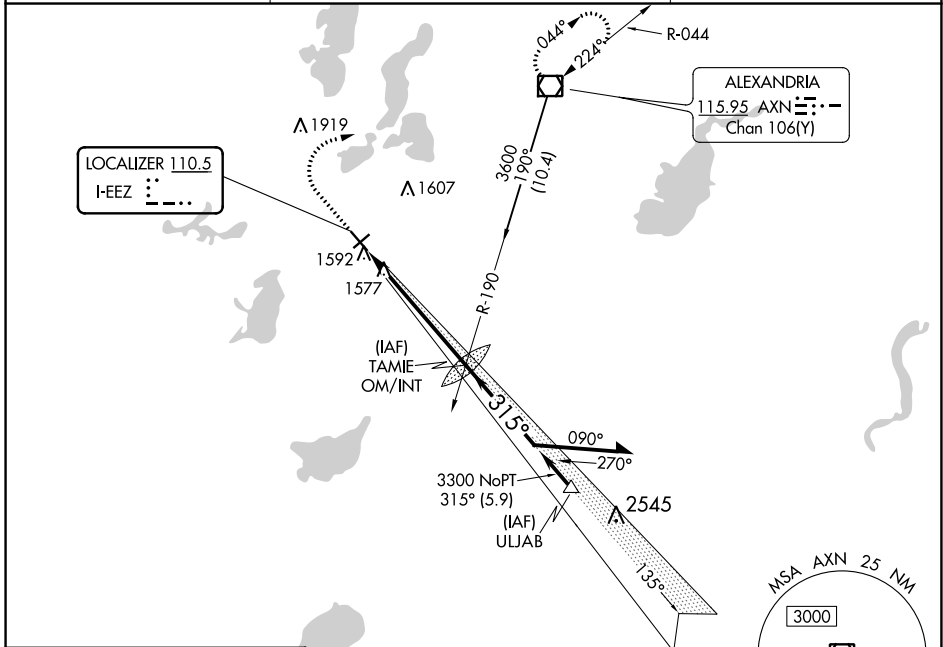
LOC I-EEZ <b>110.5</b>	APP CRS <b>315°</b>	Rwy Idg TDZE Apt Elev	<b>5099</b> <b>1423</b> <b>1425</b>
---------------------------	------------------------	-----------------------------	---

# ILS or LOC RWY 31

CHANDLER FLD (AXN)

Inoperative table does not apply to S-LOC 31 Category C.		MISSED APPROACH: Climb to 2500 then climbing right turn to 3500 direct AXN VOR/DME and hold.
--	--	--

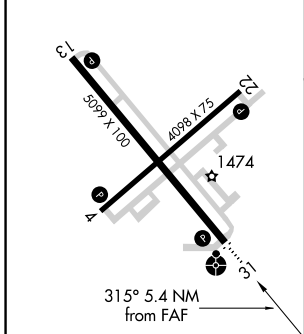
ASOS <b>118.375</b>	MINNEAPOLIS CENTER <b>126.1 269.2</b>	UNICOM <b>123.0</b> (CTAF)
------------------------	--	-------------------------------



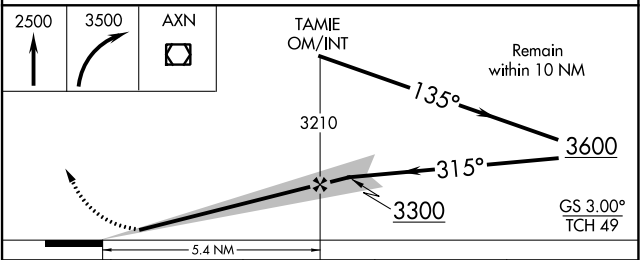
NC-1, 22 FEB 2024 to 21 MAR 2024

NC-1, 22 FEB 2024 to 21 MAR 2024

ELEV 1425	TDZE 1423
-----------	-----------



REIL Rwys 4, 13, and 22					
MIRL Rwys 4-22 and 13-31					
FAF to MAP 5.4 NM					
Knots	60	90	120	150	180
Min:Sec	5:24	3:36	2:42	2:10	1:48



CATEGORY	A	B	C	D
S-ILS 31	1673- <sup>3</sup> / <sub>4</sub> 250 (300- <sup>3</sup> / <sub>4</sub> )			
S-LOC 31	1840- <sup>3</sup> / <sub>4</sub> 417 (500- <sup>3</sup> / <sub>4</sub> )	1840-1 <sup>1</sup> / <sub>4</sub> 417 (500-1 <sup>1</sup> / <sub>4</sub> )		
CIRCLING	1920-1 495 (500-1)	1940-1 <sup>1</sup> / <sub>2</sub> 515 (600-1 <sup>1</sup> / <sub>2</sub> )	2000-2 575 (600-2)	

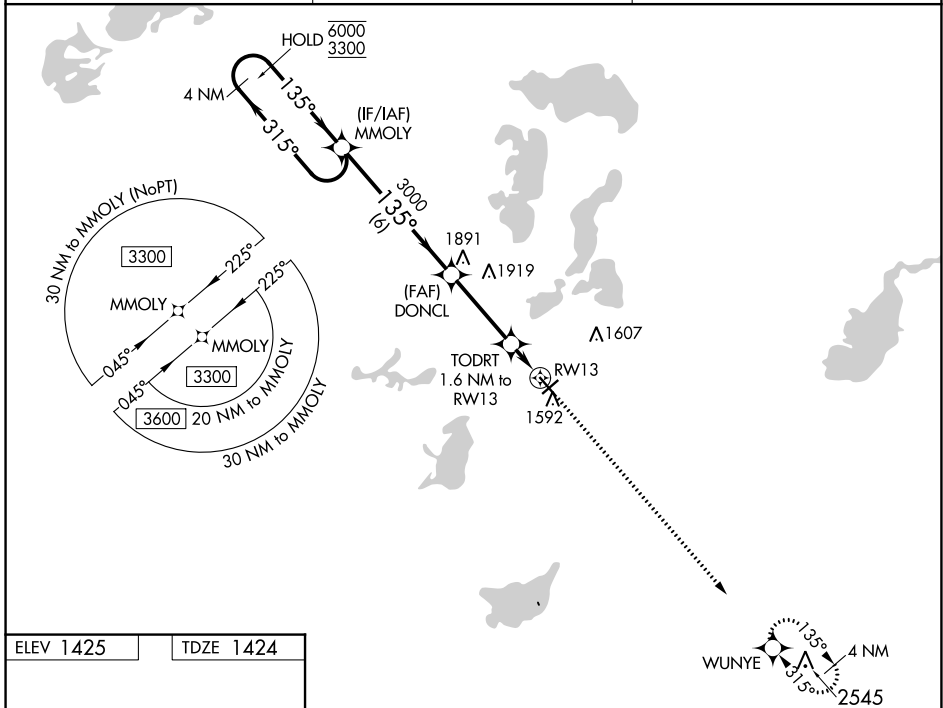
WAAS CH <b>50245</b> <b>W13A</b>	APP CRS <b>135°</b>	Rwy Idg TDZE Apt Elev	<b>5099</b> <b>1424</b> <b>1425</b>
--	------------------------	-----------------------------	---

# RNAV (GPS) RWY 13

CHANDLER FLD (AXN)

RNP APCH - GPS.	MISSED APPROACH: Climb to 3600 direct WUNYE and hold.
For uncompensated Baro-VNAV systems, LNAV/VNAV NA below -24°C or above 54°C.	

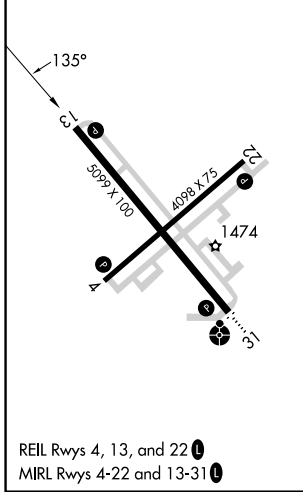
ASOS <b>118.375</b>	MINNEAPOLIS CENTER <b>126.1 269.2</b>	UNICOM <b>123.0 (CTAF) 0</b>
------------------------	--	---------------------------------



NC-1, 22 FEB 2024 to 21 MAR 2024

NC-1, 22 FEB 2024 to 21 MAR 2024

ELEV 1425	TDZE 1424
-----------	-----------



REIL Rws 4, 13, and 22   
 MRL Rws 4-22 and 13-31

4 NM Holding Pattern MMOLY				VGSi and RNAV glidepath not coincident (VGSi Angle 3.00/TCH 34).				3600	WUNYE
6000 ← 315°		3300 → 135°		3000		3000		↑	
GP 3.00°				3000				TODRT 1.6 NM to RW13	
TCH 40				1960				RW13	
				6 NM		3.3 NM		1.6 NM	
CATEGORY	A		B		C		D		
LPV DA	1674-1		250 (300-1)						
LNAV/VNAV DA	1721-1		297 (300-1)						
LNAV MDA	1800-1		376 (400-1)						
CIRCLING	1900-1 475 (500-1)		1940-1½ 515 (600-1½)		2000-2 575 (600-2)				

WAAS CH <b>48917</b> <b>W22A</b>	APP CRS <b>225°</b>	Rwy Idg TDZE Apt Elev	<b>4098</b> <b>1424</b> <b>1425</b>
--	------------------------	-----------------------------	---

# RNAV (GPS) RWY 22

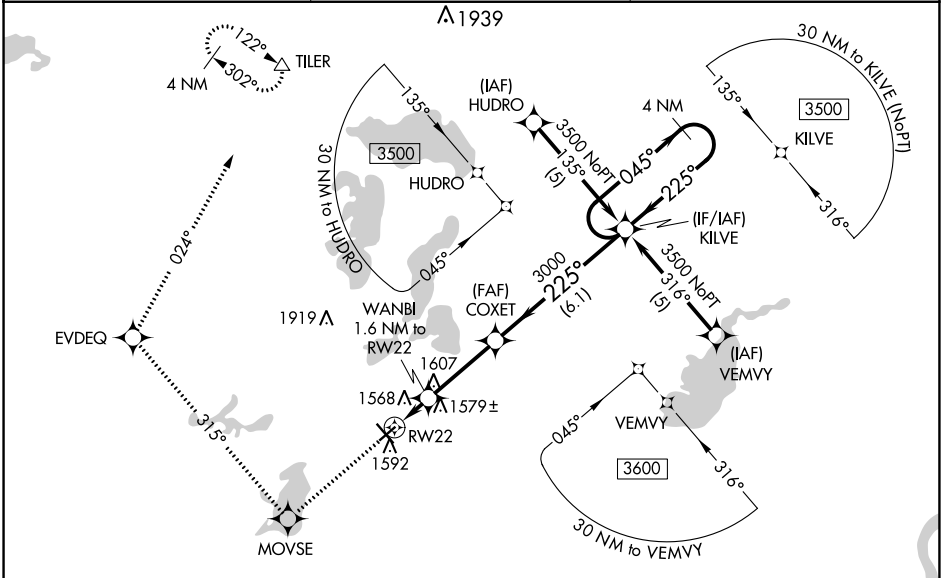
CHANDLER FLD (AXN)

RNP APCH.

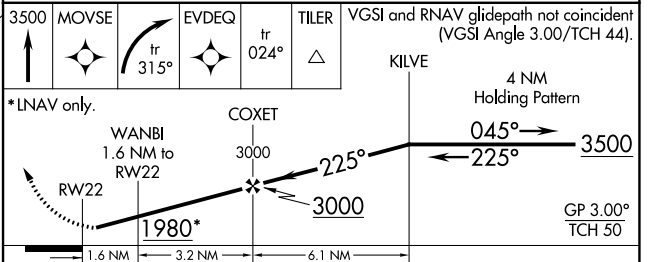
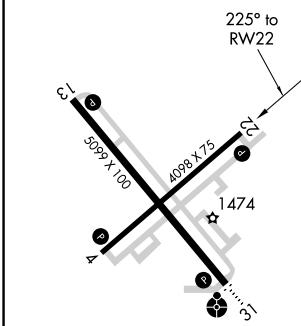
Baro-VNAV NA when using Glenwood altimeter setting. For uncompensated Baro-VNAV systems, LNAV/VNAV NA below -17°C or above 46°C. When local altimeter setting not received, use Glenwood altimeter setting and increase all DA 37 feet and all MDA 40 feet, increase LNAV/VNAV all Cats and LNAV Cat D visibility ¼ mile. Rwy 22 helicopter visibility reduction below ¾ SM NA.

MISSED APPROACH: Climb to 3500 direct MOVE and right turn on track 315° to EVDEQ and on track 024° to TILER and hold.

ASOS <b>118.375</b>	MINNEAPOLIS CENTER <b>126.1 269.2</b>	UNICOM <b>123.0 (CTAF) 0</b>
------------------------	--	---------------------------------



ELEV 1425	TDZE 1424
-----------	-----------



CATEGORY	A	B	C	D
LPV DA	1677-1 253 (300-1)			
LNAV/VNAV DA	1880-1½ 456 (500-1½)			
LNAV MDA	1840-1	416 (500-1)	1840-1¼	416 (500-1¼)

NC-1, 22 FEB 2024 to 21 MAR 2024

NC-1, 22 FEB 2024 to 21 MAR 2024

WAAS CH <b>61007</b> <b>W31A</b>	APP CRS <b>315°</b>	Rwy Idg TDZE <b>1423</b> Apt Elev <b>1425</b>	<b>5099</b>
--	------------------------	---	-------------

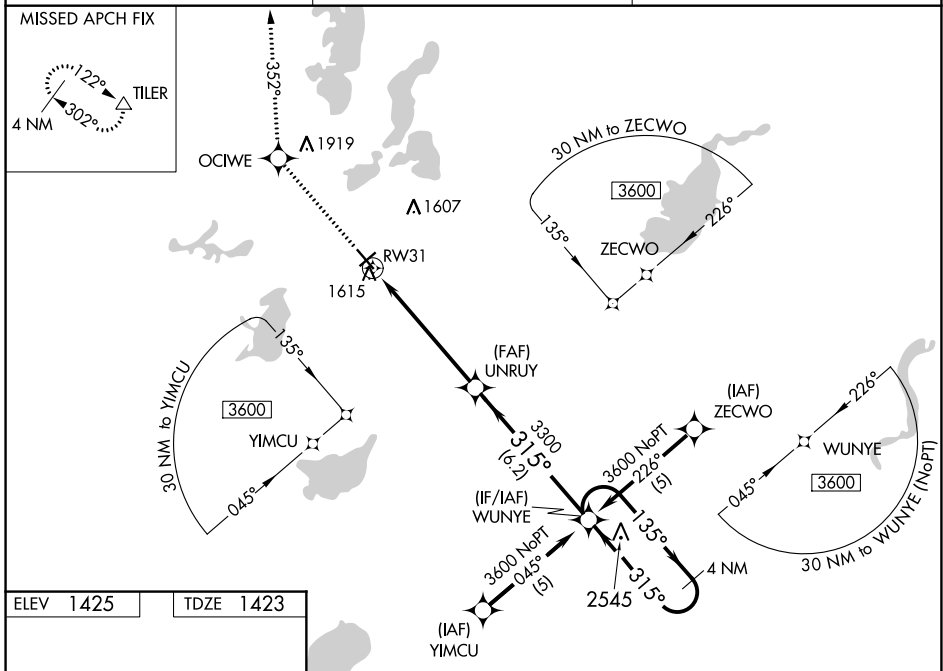
# RNAV (GPS) RWY 31

CHANDLER FLD (A.XN)

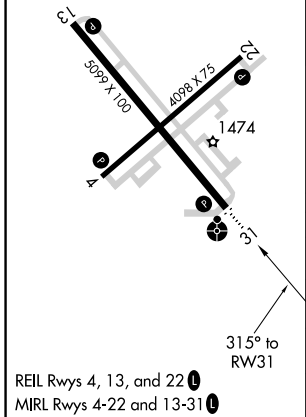
**⚠** Inoperative table does not apply to LPV & LNAV/VNAV Cats A/B/C and LNAV Cat C. For uncompensated Baro-VNAV systems, LNAV/VNAV NA below -17°C (2°F) or above 46°C (114°F). DME/DME RNP -0.3 NA. VDP and Baro-VNAV NA when using Glenwood altimeter setting. When local altimeter setting not received, use Glenwood altimeter setting and increase all DAs/MDAs 40 feet and increase LPV and LNAV/VNAV visibilities ½ mile all Cats.

**ODALS**  
 MISSED APPROACH: Climb to 3500 direct OCFWE and via 352° track to TILER and hold.

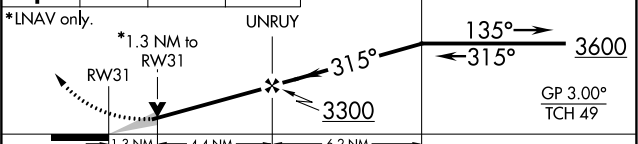
ASOS <b>118.375</b>	MINNEAPOLIS CENTER <b>126.1 269.2</b>	UNICOM <b>123.0 (CTAF) 0</b>
------------------------	--	---------------------------------



ELEV 1425	TDZE 1423
-----------	-----------



3500	OCIFE	tr 352°	TILER	WUNYE	4 NM Holding Pattern
------	-------	---------	-------	-------	----------------------



CATEGORY	A	B	C	D
LPV DA		1815-1¼	392 (400-1¼)	
LNAV/VNAV DA		1885-1½	462 (500-1½)	
LNAV MDA	1880-¾	457 (500-¾)	1880-1¼ 457 (500-1¼)	1880-1½ 457 (500-1½)
CIRCLING	1920-1	495 (500-1)	1940-1½ 515 (600-1½)	2000-2 575 (600-2)

NC-1, 22 FEB 2024 to 21 MAR 2024

NC-1, 22 FEB 2024 to 21 MAR 2024

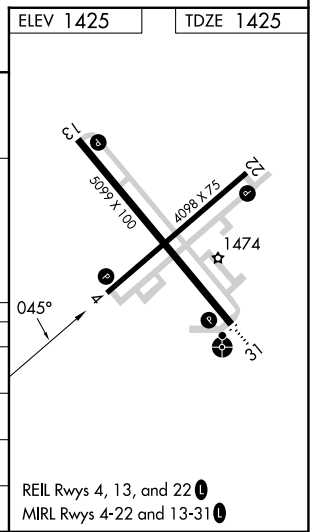
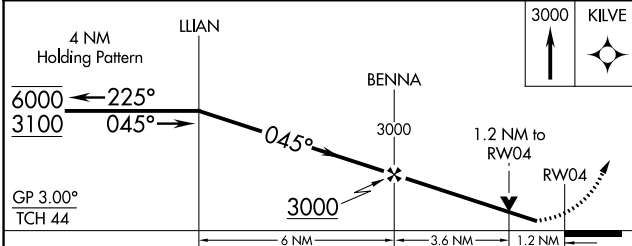
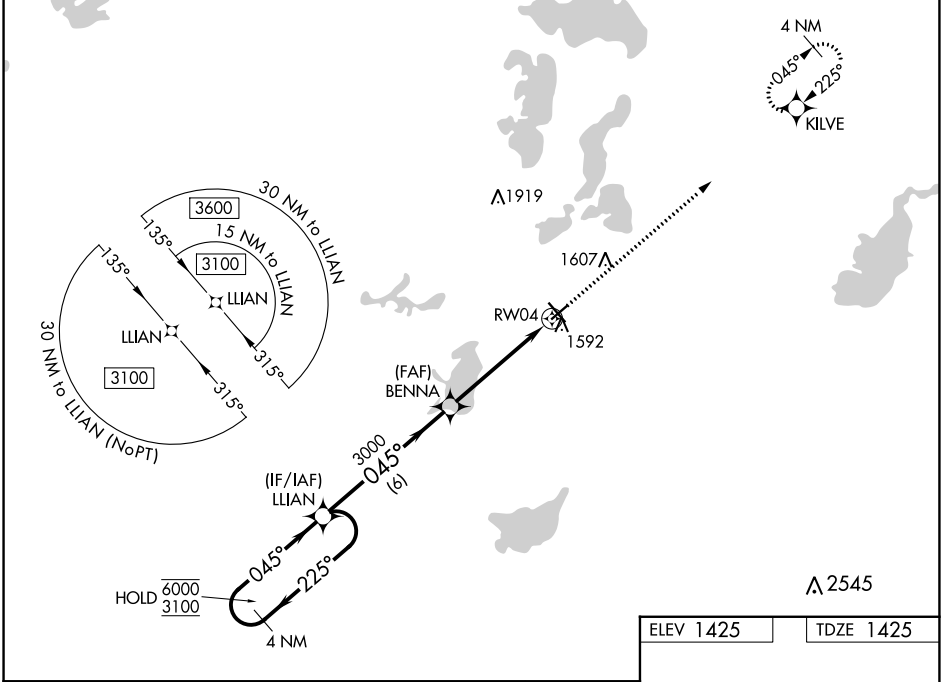
WAAS CH <b>90245</b> <b>W04A</b>	APP CRS <b>045°</b>	Rwy Idg <b>4098</b> TDZE <b>1425</b> Apt Elev <b>1425</b>
--	------------------------	---

# RNAV (GPS) RWY 4

CHANDLER FLD (A.XN)

RNP APCH - GPS.	MISSED APPROACH: Climb to 3000 direct KILVE and hold.
<p>▼ Rwy 4 helicopter visibility reduction below 3/4 SM NA.</p> <p>▲ For uncompensated Baro-VNAV systems, LNAV/VNAV NA below -22°C or above 54°C.</p>	

ASOS <b>118.375</b>	MINNEAPOLIS CENTER <b>126.1 269.2</b>	UNICOM <b>123.0 (CTAF) 0</b>
------------------------	--	---------------------------------



CATEGORY	A	B	C	D
LPV DA	1675-1 250 (300-1)			
LNAV/VNAV DA	1826-1 1/8 401 (500-1 1/8)			
LNAV MDA	1860-1 435 (500-1)	1860-1 1/4 435 (500-1 1/4)		
CIRCLING	1900-1 475 (500-1)	1940-1 1/2 515 (600-1 1/2)	2000-2 575 (600-2)	

NC-1, 22 FEB 2024 to 21 MAR 2024

NC-1, 22 FEB 2024 to 21 MAR 2024

VOR/DME AXN <b>115.95</b> Chan <b>106(Y)</b>	APP CRS <b>224°</b>	Rwy Idg TDZE <b>1423</b> Apt Elev <b>1425</b>
--	------------------------	---

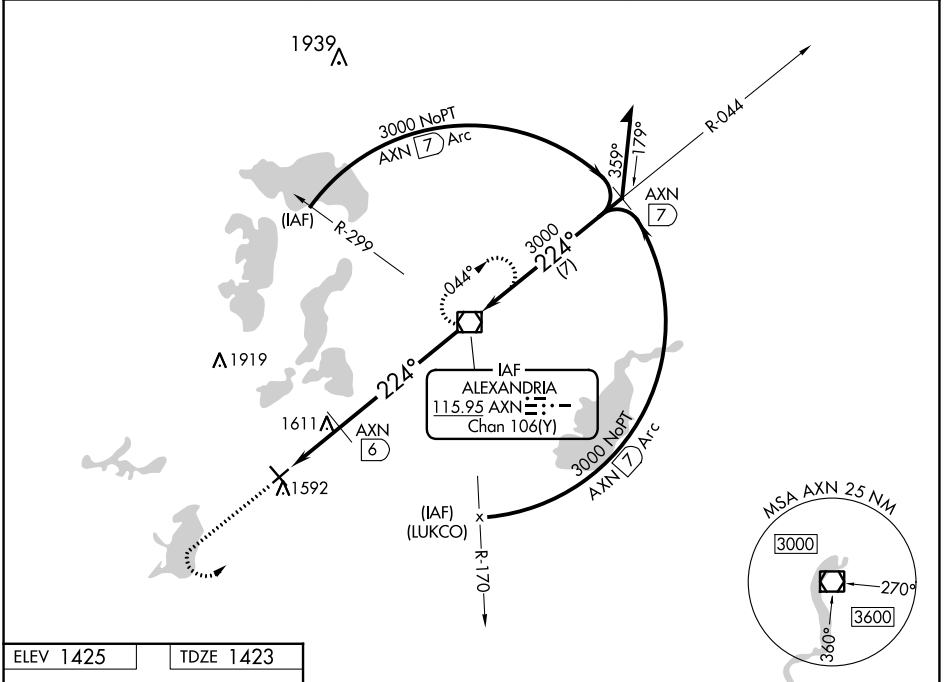
# VOR RWY 22

CHANDLER FLD (AXN)

**▼** Rwy 22 helicopter visibility reduction below  $\frac{3}{4}$  SM NA.

MISSED APPROACH: Climb to 2500 then climbing left turn to 3000 direct to AXN VOR/DME and hold.

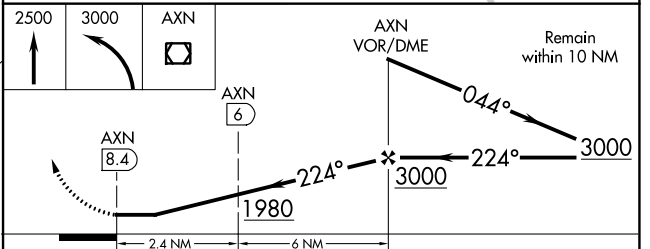
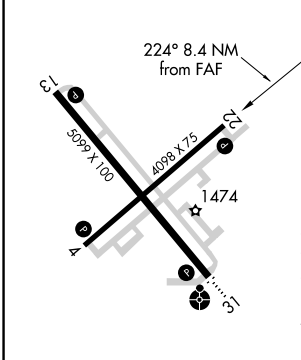
ASOS <b>118.375</b>	MINNEAPOLIS CENTER <b>126.1 269.2</b>	UNICOM <b>123.0 (CTAF) 0</b>
------------------------	--	---------------------------------



NC-1, 22 FEB 2024 to 21 MAR 2024

NC-1, 22 FEB 2024 to 21 MAR 2024

ELEV 1425	TDZE 1423
-----------	-----------



CATEGORY	A	B	C	D
S-22	1980-1 557 (600-1)		1980-1½ 557 (600-1½)	1980-1¾ 557 (600-1¾)
CIRCLING	1980-1 555 (600-1)		1980-1½ 555 (600-1½)	2000-2 575 (600-2)
DME MINIMUMS				
S-22	1880-1 457 (500-1)		1880-1¼ 457 (500-1¼)	1880-1½ 457 (500-1½)
CIRCLING	1920-1 495 (500-1)		1940-1½ 515 (600-1½)	2000-2 575 (600-2)

REIL Rws 4, 13, and 22  
MIRL Rws 4-22 and 13-31

FAF to MAP 8.4 NM

Knots	60	90	120	150	180
Min:Sec	8:24	5:36	4:12	3:22	2:48