

**TOP ALTITUDE:  
ASSIGNED BY ATC**

(AEROZ2.AEROZ) 21112  
AEROZ TWO DEPARTURE (RNAV) AL-556

AUSTIN-BERGSTROM INTL (AUS)  
AUSTIN, TEXAS

AEROZ TWO DEPARTURE (RNAV)  
(AEROZ2.AEROZ) 22APR21

D-ATIS  
124.4  
CLNC DEL  
125.5 263.0  
CPDLC  
GND CON  
121.9 348.6  
AUSTIN TOWER  
121.0 281.5  
AUSTIN DEP CON  
119.0 317.65

SAN ANGELO  
SJT

FL180  
293°  
(91)

AEROZ

293°  
(33)

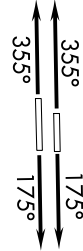
AMUSE  
5000



**TAKEOFF MINIMUMS**

Rwys 18L/R: Standard.  
Rwys 36L/R: Standard with minimum climb of 240' per NM to 2600.

NOTE: RADAR required.  
NOTE: DME/DME/IRU or GPS required.  
NOTE: RNAV 1.



NOTE: Chart not to scale.

**DEPARTURE ROUTE DESCRIPTION**

TAKEOFF RUNWAYS 18L/R: Climb on heading 175° or as assigned by ATC for vectors to cross AMUSE at or above 5000, thence....

TAKEOFF RUNWAYS 36L/R: Climb on heading 355° or as assigned by ATC for vectors to cross AMUSE at or above 5000, thence....

... on track 293° to AEROZ, then on SAN ANGELO TRANSITION. Maintain altitude assigned by ATC. Expect filed altitude 10 minutes after departure.

SAN ANGELO TRANSITION (AEROZ2.SJT)

AUSTIN, TEXAS  
AUSTIN-BERGSTROM INTL (AUS)

# AUSTIN SIX DEPARTURE

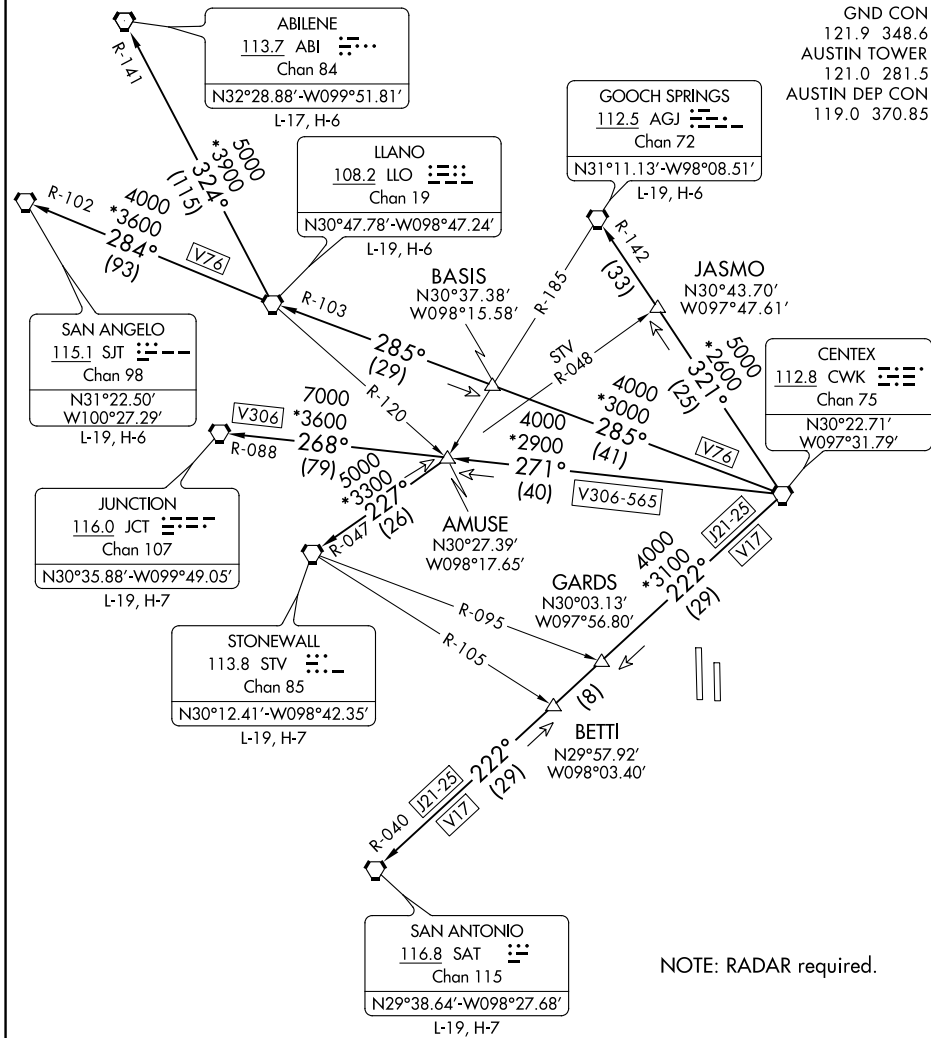
AL-556 (FAA)

AUSTIN-BERGSTROM INTL (AUS)

AUSTIN, TEXAS

**TOP ALTITUDE:  
ASSIGNED BY ATC**

D-ATIS  
124.4  
CLNC DEL  
125.5 263.0  
CPDLC  
GND CON  
121.9 348.6  
AUSTIN TOWER  
121.0 281.5  
AUSTIN DEP CON  
119.0 370.85



SC-3, 22 FEB 2024 to 21 MAR 2024

SC-3, 22 FEB 2024 to 21 MAR 2024

**TAKEOFF MINIMUMS**

Rwys 18L/R: Standard.  
Rwys 36L/R: Standard with minimum climb of 240' per NM to 2600.

(NARRATIVE ON FOLLOWING PAGE)

NOTE: Chart not to scale.

# AUSTIN SIX DEPARTURE

AUSTIN, TEXAS

AUSTIN-BERGSTROM INTL (AUS)



DEPARTURE ROUTE DESCRIPTION

TAKEOFF RUNWAYS 18L/R, 36L/R: Climb on assigned heading for vectors, then on assigned transition. Maintain altitude assigned by ATC, expect filed altitude 10 minutes after departure.

ABILENE TRANSITION (AUS6.ABI): From over CWK VORTAC on CWK R-285 and LLO R-103 to LLO VORTAC, then on LLO R-324 and ABI R-141 to ABI VORTAC.

GOOCH SPRINGS TRANSITION (AUS6.AGJ): From over CWK VORTAC on CWK R-321 and AGJ R-142 to AGJ VORTAC.

JUNCTION TRANSITION (AUS6.JCT): From over CWK VORTAC on CWK R-271 and JCT R-088 to JCT VORTAC.

LLANO TRANSITION (AUS6.LLO): From over CWK VORTAC on CWK R-285 and LLO R-103 to LLO VORTAC.

SAN ANGELO TRANSITION (AUS6.SJT): From over CWK VORTAC on CWK R-285 and LLO R-103 to LLO VORTAC, then on LLO R-284 and SJT R-102 to SJT VORTAC.

SAN ANTONIO TRANSITION (AUS6.SAT): From over CWK VORTAC on CWK R-222 and SAT R-040 to SAT VORTAC.

STONEWALL TRANSITION (AUS6.STV): From over CWK VORTAC on CWK R-271 and STV R-047 to STV VORTAC.

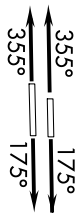
SC-3, 22 FEB 2024 to 21 MAR 2024

SC-3, 22 FEB 2024 to 21 MAR 2024

# BNDIA THREE DEPARTURE (RNAV)

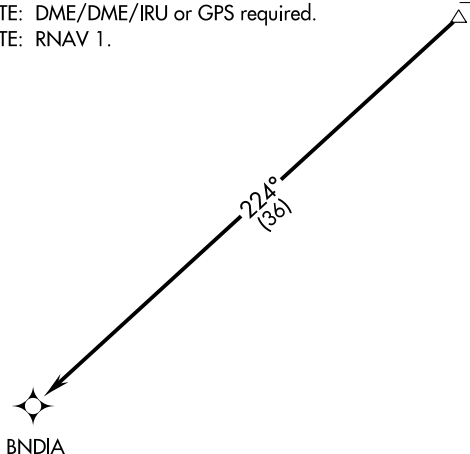
**TOP ALTITUDE:  
ASSIGNED BY ATC**

D-ATIS	124.4
CLNC DEL	125.5 263.0
CPDLC	
GND CON	121.9 348.6
AUSTIN TOWER	121.0 281.5
AUSTIN DEP CON	119.0 370.85



NOTE: RADAR required.  
 NOTE: DME/DME/IRU or GPS required.  
 NOTE: RNAV 1.

GARDS  
5000



TAKEOFF MINIMUMS:

Rwys 18L/R: Standard.

Rwys 36L/R: Standard with minimum climb of 240' per NM to 2600.

NOTE: Chart not to scale.



## DEPARTURE ROUTE DESCRIPTION

TAKEOFF RUNWAYS 18L/R: Climb on heading 175° or as assigned by ATC for vectors to cross GARDS at or above 5000, thence . . . .

TAKEOFF RUNWAYS 36L/R: Climb on heading 355° or as assigned by ATC for vectors to cross GARDS at or above 5000, thence . . . .

. . . . on track 224° to BNDIA. Maintain altitude assigned by ATC. Expect filed altitude 10 minutes after departure.

# CENTEX SEVEN DEPARTURE

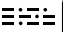
AL-556 (FAA)

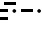
AUSTIN-BERGSTROM INTL (AUS)

AUSTIN, TEXAS

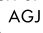
D-ATIS  
124.4  
CLNC DEL  
125.5 263.0  
CPDLC  
GND CON  
121.9 348.6  
AUSTIN TOWER  
121.0 281.5  
AUSTIN DEP CON  
127.225 317.65


**TOP ALTITUDE:  
ASSIGNED BY ATC**

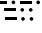
CEDAR CREEK  
114.8 CQY   
Chan 95

WACO  
115.3 ACT   
Chan 100  
N31°39.73' - W97°16.14'  
L-19, H-6

NAVYS  
N31°23.29'  
W096°18.82'  
L-19-21, H-5


GOOCH SPRINGS  
112.5 AGJ   
Chan 72


LEONA  
110.8 LOA   
Chan 45

COLLEGE STATION  
113.3 CLL   
Chan 80  
N30°36.30' - W96°25.24'

DARTE  
N30°45.97'  
W097°27.11'

MUNCH  
N30°34.58'  
W097°17.68'

CENTEX  
112.8 CWK   
Chan 75  
N30°22.71'  
W97°31.79'

NAVASOTA  
115.9 TNV   
Chan 106  
N30°17.31'  
W96°03.49'  
L-19-21, H-7

HOOKK  
N30°21.60'  
W097°12.18'

IILEXY  
N30°21.17'  
W097°04.76'  
L-19-21

INDUSTRY  
110.2 IDU   
Chan 39

### TAKEOFF MINIMUMS

Rwys 18L/R: Standard.

Rwys 36L/R: Standard with minimum climb of 240' per NM to 2600.

NOTE: RADAR required.

NOTE: COLLEGE STATION transition for aircraft requesting 9000 MSL to FL230.

NOTE: IILEXY transition for turboprop and turbojet aircraft landing HOU; for turbojet aircraft landing EFD, GLS, or LXB; for all aircraft landing IAH.

NOTE: JAYJO transition for piston aircraft landing HOU; for piston and turboprop aircraft landing EFD, GLS or LXB; for all aircraft landing other west/south Houston terminal area airports.

NOTE: NAVYS transition for aircraft destined to the Dallas/Fort Worth terminal area requesting FL230 and below. Do not file this transition if these conditions are not met.

NOTE: WACO transition for aircraft requesting 12000' MSL and below.

(NARRATIVE ON FOLLOWING PAGE)

NOTE: Chart not to scale.

# CENTEX SEVEN DEPARTURE

AUSTIN, TEXAS

AUSTIN-BERGSTROM INTL (AUS)

SC-3, 22 FEB 2024 to 21 MAR 2024

SC-3, 22 FEB 2024 to 21 MAR 2024



DEPARTURE ROUTE DESCRIPTION

TAKEOFF RUNWAYS 18L/R, 36L/R: Climb on assigned heading for vectors, then on assigned transition. Maintain altitude assigned by ATC, expect filed altitude 10 minutes after departure.

COLLEGE STATION TRANSITION (CWK7.CLL): From over CWK VORTAC on CWK R-088 to ILEXY INT, then on CLL R-238 to CLL VORTAC.

ILEXY TRANSITION (CWK7.ILEXY): From over CWK VORTAC on CWK R-088 to ILEXY INT.

JAYJO TRANSITION (CWK7.JAYJO): From over CWK VORTAC on CWK R-088 to JAYJO INT.

NAVASOTA TRANSITION (CWK7.TNV): From over CWK VORTAC on CWK R-088 and TNV R-266 to TNV VOR/DME.

NAVYS TRANSITION (CWK7.NAVYS): From over CWK VORTAC on CWK R-040 to NAVYS INT.

WACO TRANSITION (CWK7.ACT): From over CWK VORTAC on CWK R-004 and ACT R-181 to ACT VORTAC.

SC-3, 22 FEB 2024 to 21 MAR 2024

SC-3, 22 FEB 2024 to 21 MAR 2024

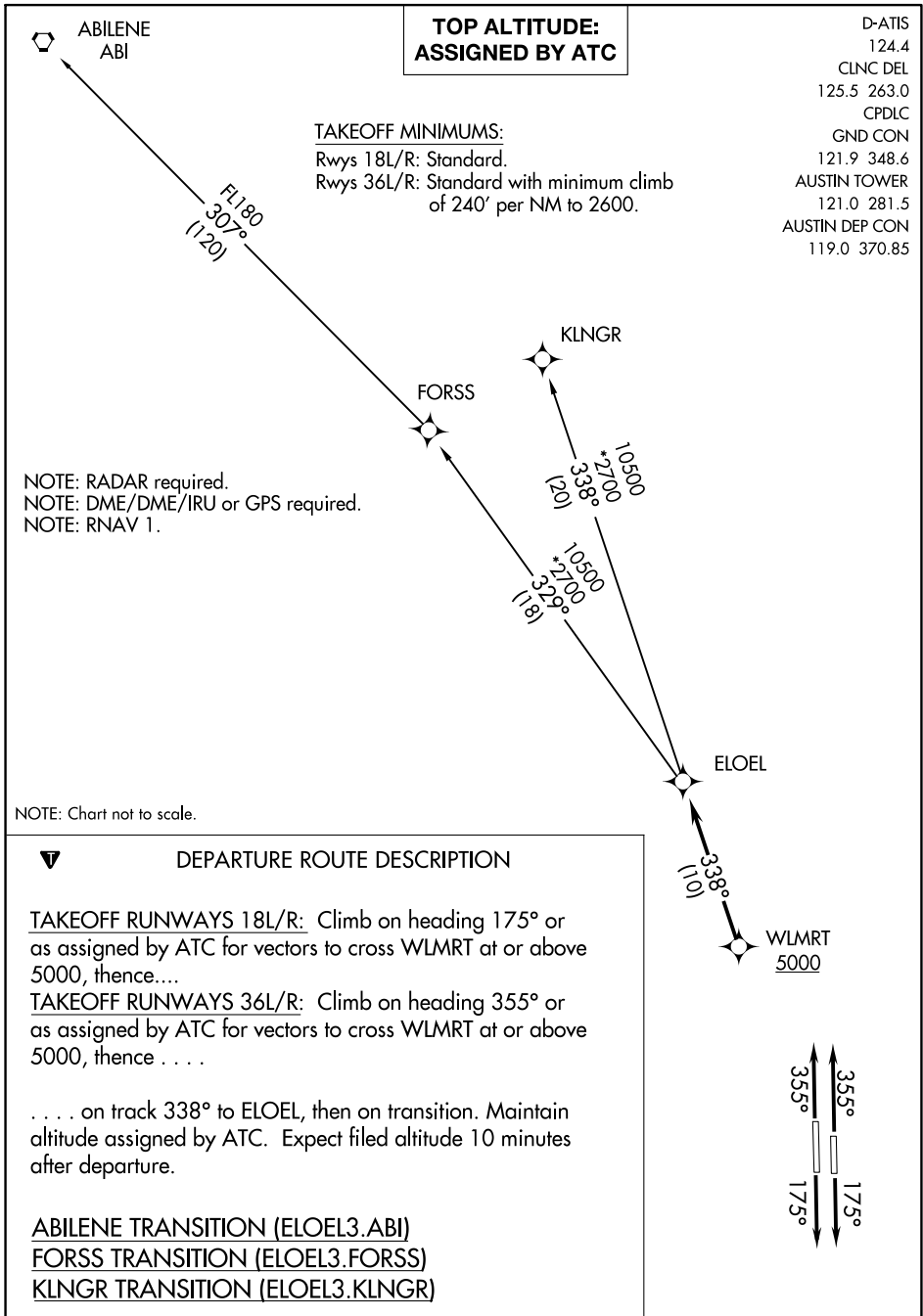
(ELOEL3.ELOEL) 21112

AUSTIN-BERGSTROM INTL (AUS)

# ELOEL THREE DEPARTURE (RNAV)

AL-556 (FAA)

AUSTIN, TEXAS



SC-3, 22 FEB 2024 to 21 MAR 2024

SC-3, 22 FEB 2024 to 21 MAR 2024

# ELOEL THREE DEPARTURE (RNAV)

(ELOEL3.ELOEL) 22APR21

AUSTIN, TEXAS  
AUSTIN-BERGSTROM INTL (AUS)

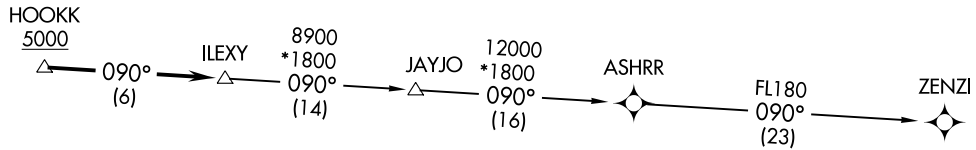
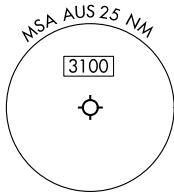
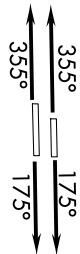
ILEXY4.ILEXY) 15JUN23

ILEXY FOUR DEPARTURE (RNAV)

D-ATIS  
124.4  
CLINC DEL  
125.5 263.0  
CPDLC  
GND CON  
121.9 348.6  
AUSTIN TOWER  
121.0 281.5  
AUSTIN DEP CON  
127.225 317.65

RNAV 1- DME/DME/IRU or GPS.  
RADAR required.

**TOP ALTITUDE:  
ASSIGNED BY ATC**



**TAKEOFF MINIMUMS**  
Rwys 18L/R: Standard.  
Rwys 36L/R: Standard with minimum climb of 240' per NM to 2600.

NOTE: Houston terminal area arrivals expect routing from ILEXY.  
NOTE: JAYJO transition to join V306 only.  
NOTE: Aircraft not destined the Houston terminal area or joining V306 must file the ZENZI transition.



NOTE: Chart not to scale.

**DEPARTURE ROUTE DESCRIPTION**

TAKEOFF RUNWAYS 18L/R: Climb on heading 175° or as assigned by ATC for vectors to cross HOOKK at or above 5000, thence. . . .  
TAKEOFF RUNWAYS 36L/R: Climb on heading 355° or as assigned by ATC for vectors to cross HOOKK at or above 5000, thence. . . .  
. . . . on track 090° to ILEXY, then on transition. Maintain altitude assigned by ATC. Expect filed altitude 10 minutes after departure.

JAYJO TRANSITION (ILEXY4.JAYJO)  
ZENZI TRANSITION (ILEXY4.ZENZI)

AUSTIN, TEXAS  
AUSTIN-BERGSTROM INTL (AUS)

ILEXY4.ILEXY) 23166

ILEXY FOUR DEPARTURE (RNAV)

AL-556 (FAA)

AUSTIN-BERGSTROM INTL (AUS)  
AUSTIN, TEXAS



(MUCKY3.MUCKY) 21112

AL-556 (FAA)

AUSTIN-BERGSTROM INTL (AUS)

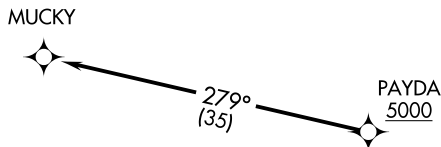
AUSTIN, TEXAS

# MUCKY THREE DEPARTURE (RNAV)

**TOP ALTITUDE:  
ASSIGNED BY ATC**

D-ATIS  
124.4  
CLNC DEL  
125.5 263.0  
CPDLC  
GND CON  
121.9 348.6  
AUSTIN TOWER  
121.0 281.5  
AUSTIN DEP CON  
119.0 370.85

NOTE: RADAR required.  
NOTE: DME/DME/IRU or GPS required.  
NOTE: RNAV 1.



### TAKEOFF MINIMUMS

Rwys 18L/R: Standard.

Rwys 36L/R: Standard with minimum climb  
of 240' per NM to 2600.

NOTE: Chart not to scale.



### DEPARTURE ROUTE DESCRIPTION

TAKEOFF RUNWAYS 18L/R: Climb on heading 175° or as assigned by ATC for vectors to cross PAYDA at or above 5000, thence. . . .

TAKEOFF RUNWAYS 36L/R: Climb on heading 355° or as assigned by ATC for vectors to cross PAYDA at or above 5000, thence. . . .

. . . .on track 279° to MUCKY. Maintain altitude assigned by ATC. Expect filed altitude 10 minutes after departure.

# MUCKY THREE DEPARTURE (RNAV)

(MUCKY3.MUCKY) 22APR21

AUSTIN, TEXAS

AUSTIN-BERGSTROM INTL (AUS)

SC-3, 22 FEB 2024 to 21 MAR 2024

SC-3, 22 FEB 2024 to 21 MAR 2024

# PALMS THREE DEPARTURE


AL-556 (FAA)

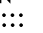
AUSTIN-BERGSTROM INTL (AUS)

AUSTIN, TEXAS

D-ATIS  
124.4  
CLNC DEL  
125.5 263.0  
CPDLC  
GND CON  
121.9 348.6  
AUSTIN TOWER  
121.0 281.5  
AUSTIN DEP CON  
127.225 317.65

**TOP ALTITUDE:  
ASSIGNED BY ATC**


CENTEX  
112.8 CWK   
Chan 75  
N30°22.71'  
W097°31.79'

STINSON  
108.4 SSF 

R-084

PALMS  
N29°12.81'  
W97°24.82'  
5000

R-352

CORPUS CHRISTI  
115.5 CRP   
Chan 102  
N27°54.23' - 097°26.69'  
L-20-21, H-7

NOTE: RADAR required.

### TAKEOFF MINIMUMS

Rwys 18L/R: Standard.

Rwys 36L/R: Standard with minimum climb of 240' per NM to 2600.

NOTE: Chart not to scale.



### DEPARTURE ROUTE DESCRIPTION

TAKEOFF RUNWAYS 18L/R, 36L/R: Climb on assigned heading for vectors to CWK VORTAC, then on CWK R-169 to cross PALMS INT at or above 5000, then on CRP R-352 to CRP VORTAC. Maintain altitude assigned by ATC, expect filed altitude 10 minutes after departure.

# PALMS THREE DEPARTURE

(SAYBR3.SAYBR) 21112

# SAYBR THREE DEPARTURE (RNAV)

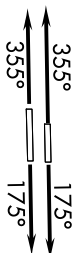
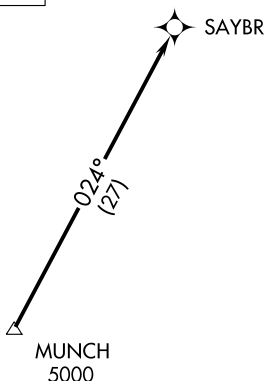
AL-556 (FAA)

AUSTIN-BERGSTROM INTL (AUS)

AUSTIN, TEXAS

D-ATIS  
 124.4  
 CLNC DEL  
 125.5 263.0  
 CPDLC  
 GND CON  
 121.9 348.6  
 AUSTIN TOWER  
 121.0 281.5  
 AUSTIN DEP CON  
 127.225 317.65

**TOP ALTITUDE:  
 ASSIGNED BY ATC**



- NOTE: RADAR required.
- NOTE: DME/DME/IRU or GPS required.
- NOTE: RNAV 1.
- NOTE: For DFW terminal area arrivals at FL230 or below only.

### TAKEOFF MINIMUMS

Rwys 18L/R: Standard.  
 Rwys 36L/R: Standard with minimum climb of 240' per NM to 2600.

NOTE: Chart not to scale.



### DEPARTURE ROUTE DESCRIPTION

TAKEOFF RUNWAYS 18L/R: Climb on heading 175° or as assigned by ATC for vectors to cross MUNCH at or above 5000, thence . . . .

TAKEOFF RUNWAYS 36L/R: Climb on heading 355° or as assigned by ATC for vectors to cross MUNCH at or above 5000, thence . . . .

. . . . on track 024° to SAYBR. Maintain altitude assigned by ATC.  
 Expect filed altitude 10 minutes after departure.

# SAYBR THREE DEPARTURE (RNAV)

(SAYBR3.SAYBR) 22APR21

AUSTIN, TEXAS

AUSTIN-BERGSTROM INTL (AUS)

SC-3, 22 FEB 2024 to 21 MAR 2024

SC-3, 22 FEB 2024 to 21 MAR 2024