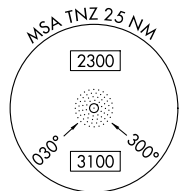
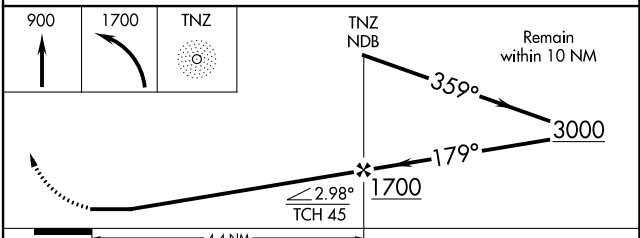
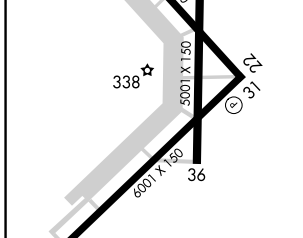
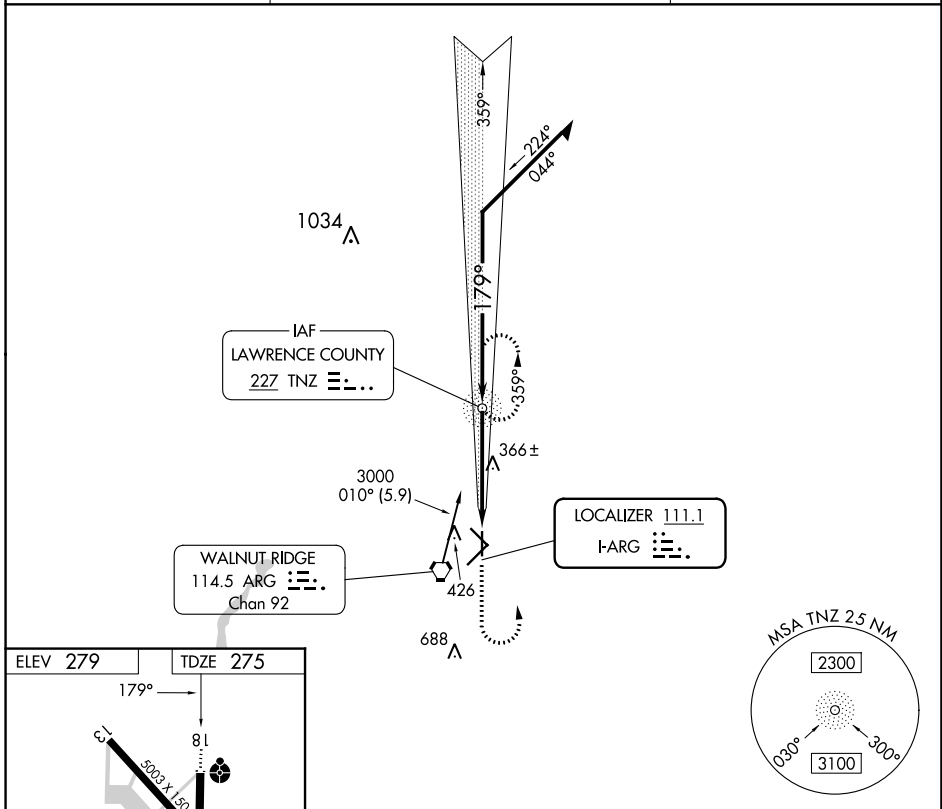


LOC I-ARG <b>111.1</b>	APP CRS <b>179°</b>	Rwy Idg 5001
		TDZE 275
		Apt Elev 279

# LOC RWY 18

WALNUT RIDGE RGNL (ARG)

ADF required.		ODALS 	MISSED APPROACH: Climb to 900 then climbing left turn to 1700 direct TNZ NDB and hold.
Inop table does not apply to S-18 Cat D.			
AWOS-3PT <b>126.525</b>	MEMPHIS CENTER <b>120.075 289.4</b>	UNICOM <b>122.8 (CTAF) 0</b>	



ELEV 279	TDZE 275
REIL Rwy 18	
MIRL Rwy 4-22, 18-36	
FAF to MAP 4.4 NM	
Knots	60 90 120 150 180
Min:Sec	4:24 2:56 2:12 1:46 1:28

CATEGORY	A	B	C	D
S-18	620-3/4 345 (400-3/4)	620-7/8 345 (400-7/8)	620-1 345 (400-1)	620-1 1/4 345 (400-1 1/4)
CIRCLING	760-1 481 (500-1)	800-1 1/2 521 (600-1 1/2)	1000-2 1/4 721 (800-2 1/4)	

SC-1, 22 FEB 2024 to 21 MAR 2024

SC-1, 22 FEB 2024 to 21 MAR 2024

WAAS CH <b>65925</b> <b>W18A</b>	APP CRS <b>179°</b>	Rwy Idg TDZE Apt Elev	<b>5001</b> <b>275</b> <b>279</b>
--	------------------------	-----------------------------	---

# RNAV (GPS) RWY 18

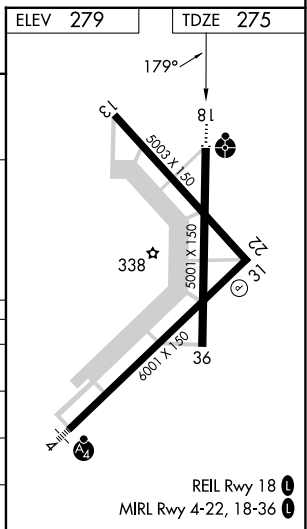
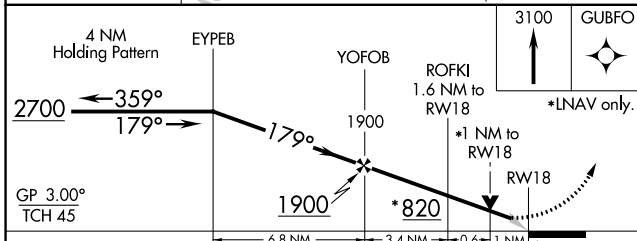
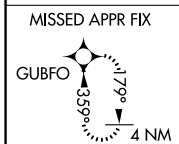
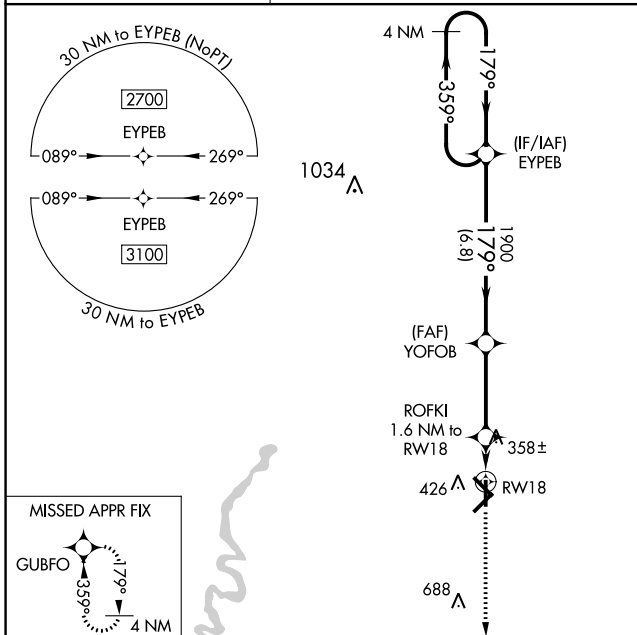
WALNUT RIDGE RGNL (A.R.G)

**⚠** For uncompensated Baro-VNAV systems, LNAV/VNAV NA below -15°C (5°F) or above 42°C (107°F). DME/DME RNP-0.3 NA. When local altimeter setting not received, use Jonesboro altimeter setting and increase LPV DA to 529 feet, LNAV/VNAV DA to 579 feet, and all MDAs 60 feet; increase Circling Cat D visibility ¼ SM. For inoperative ODALS, increase LPV all Cats and LNAV/VNAV all Cats visibility to ¾ mile and LNAV Cat C and D visibility to 1 mile. Baro-VNAV and VDP NA with Jonesboro altimeter setting.



MISSED APPROACH:  
Climb to 3100 direct  
GUBFO and hold.

AWOS-3PT <b>126.525</b>	MEMPHIS CENTER <b>120.075 289.4</b>	UNICOM <b>122.8 (CTAF)</b>
----------------------------	--	-------------------------------



CATEGORY	A	B	C	D
LPV DA		475-¾	200 (200-¾)	
LNAV/VNAV DA		525-¾	250 (300-¾)	
LNAV MDA	620-¾	345 (400-¾)	620-⅞	345 (400-⅞)
CIRCLING	760-1	481 (500-1)	800-1½ 521 (600-1½)	1000-2¼ 721 (800-2¼)

SC-1, 22 FEB 2024 to 21 MAR 2024

SC-1, 22 FEB 2024 to 21 MAR 2024

WAAS CH <b>82125</b> <b>W22A</b>	APP CRS <b>224°</b>	Rwy Idg TDZE Apt Elev	<b>6001</b> <b>274</b> <b>279</b>
--	------------------------	-----------------------------	---

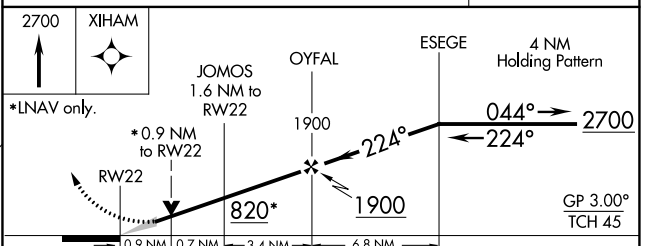
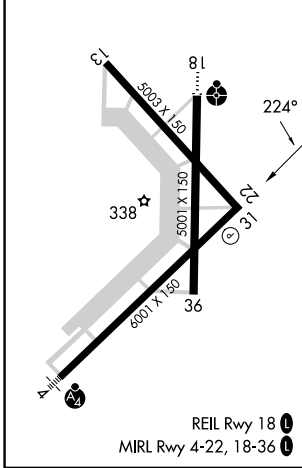
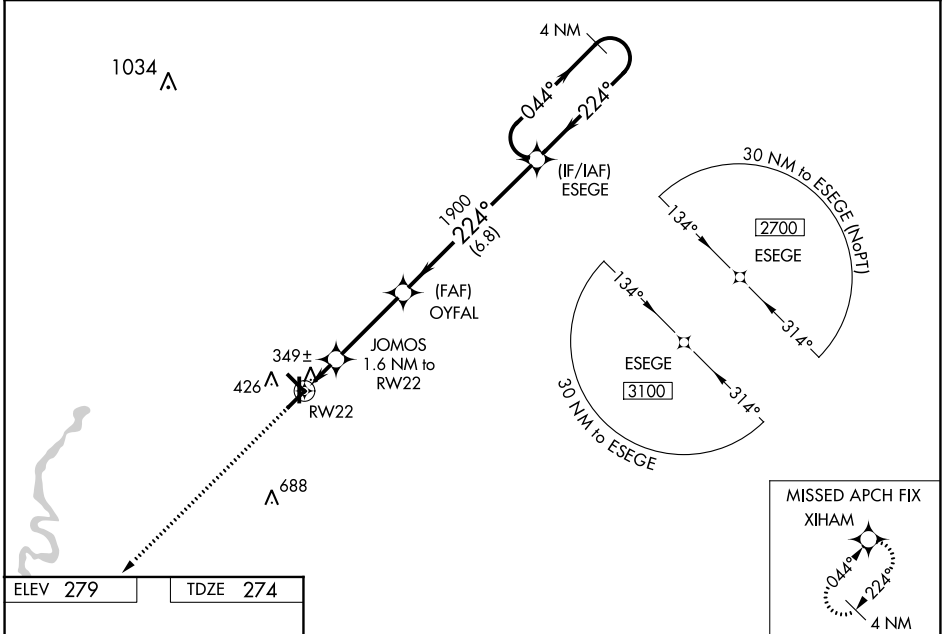
# RNAV (GPS) RWY 22

WALNUT RIDGE RGNL (ARG)

**⚠** Baro-VNAV NA when using Jonesboro altimeter setting. For uncompensated Baro-VNAV systems, LNAV/VNAV NA below -15°C (5°F) or above 42°C (107°F). DME/DME RNP-0.3 NA. VDP NA with Jonesboro altimeter setting. When local altimeter setting not received, use Jonesboro altimeter setting and increase LPV and LNAV/VNAV DA to 578 feet, and all MDAs 60 feet; increase LNAV Cats C/D visibility 1/8 SM and Circling Cat D visibility 1/4 SM.

**MISSED APPROACH:**  
Climb to 2700 direct XIHAM and hold.

AWOS-3PT <b>126.525</b>	MEMPHIS CENTER <b>120.075 289.4</b>	UNICOM <b>122.8 (CTAF)</b> <b>📻</b>
----------------------------	--	--



CATEGORY	A	B	C	D
LPV DA		524-1	250 (300-1)	
LNAV/VNAV DA		524-1	250 (300-1)	
LNAV MDA		600-1	326 (400-1)	
CIRCLING	760-1	481 (500-1)	800-1½ 521 (600-1½)	1000-2¼ 721 (800-2¼)

SC-1, 22 FEB 2024 to 21 MAR 2024

SC-1, 22 FEB 2024 to 21 MAR 2024

WAAS CH <b>45825</b> <b>W36A</b>	APP CRS <b>359°</b>	Rwy Idg TDZE Apt Elev	<b>5001</b> <b>274</b> <b>279</b>
--	------------------------	-----------------------------	---

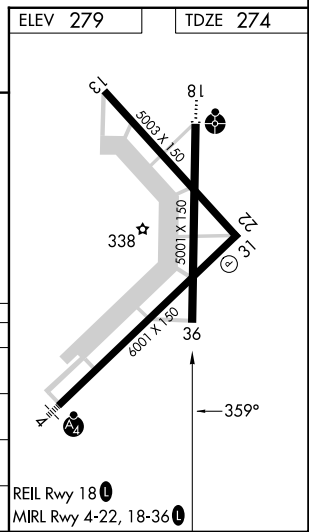
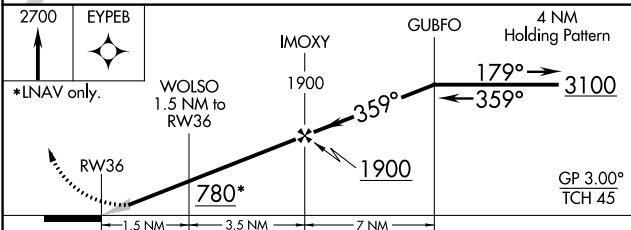
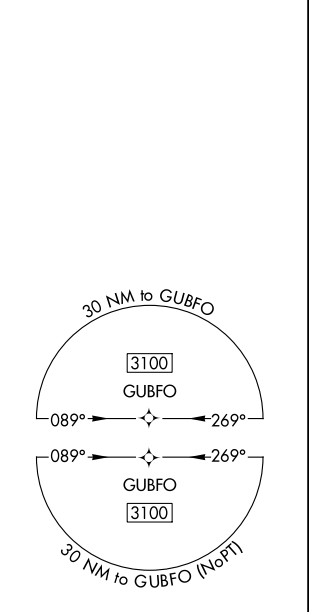
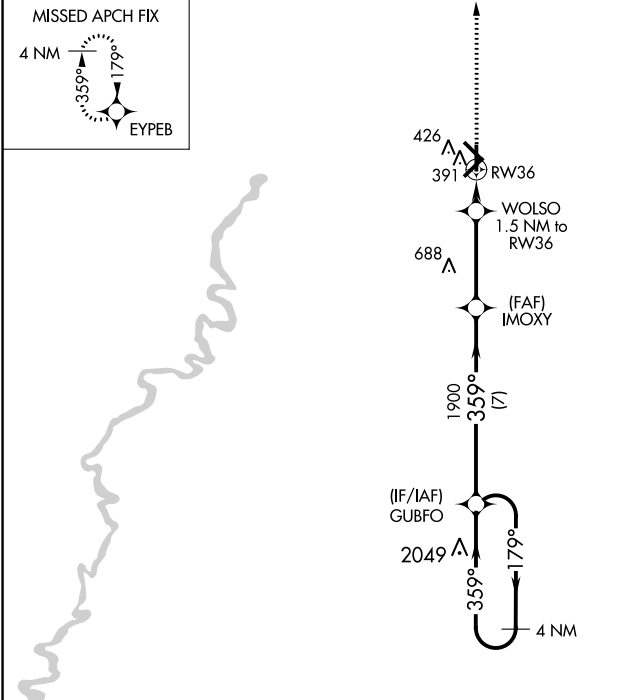
# RNAV (GPS) RWY 36

WALNUT RIDGE RGNL (ARG)

**⚠** Baro-VNAV NA when using Jonesboro altimeter setting. For uncompensated Baro-VNAV systems, LNAV/VNAV NA below -15°C (5°F) or above 42°C (107°F). DME/DME RNP-0.3 NA. When local altimeter setting not received, use Jonesboro altimeter setting and increase LPV DA to 528 feet, LNAV/VNAV DA to 628 feet, and all MDAs 60 feet; increase LNAV Cats C/D and Circling Cat D visibility ¼ SM.

**MISSED APPROACH:**  
Climb to 2700 direct EYPEB and hold.

AWOS-3PT <b>126.525</b>	MEMPHIS CENTER <b>120.075 289.4</b>	UNICOM <b>122.8 (CTAF) 0</b>
----------------------------	--	---------------------------------



CATEGORY	A	B	C	D
LPV DA		474-1	200 (200-1)	
LNAV/VNAV DA		574-1	300 (300-1)	
LNAV MDA	660-1	386 (400-1)	660-1 1/8	386 (400-1 1/8)
CIRCLING	760-1	481 (500-1)	800-1 1/2 521 (600-1 1/2)	1000-2 1/4 721 (800-2 1/4)

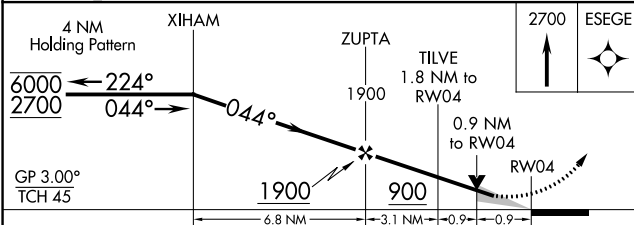
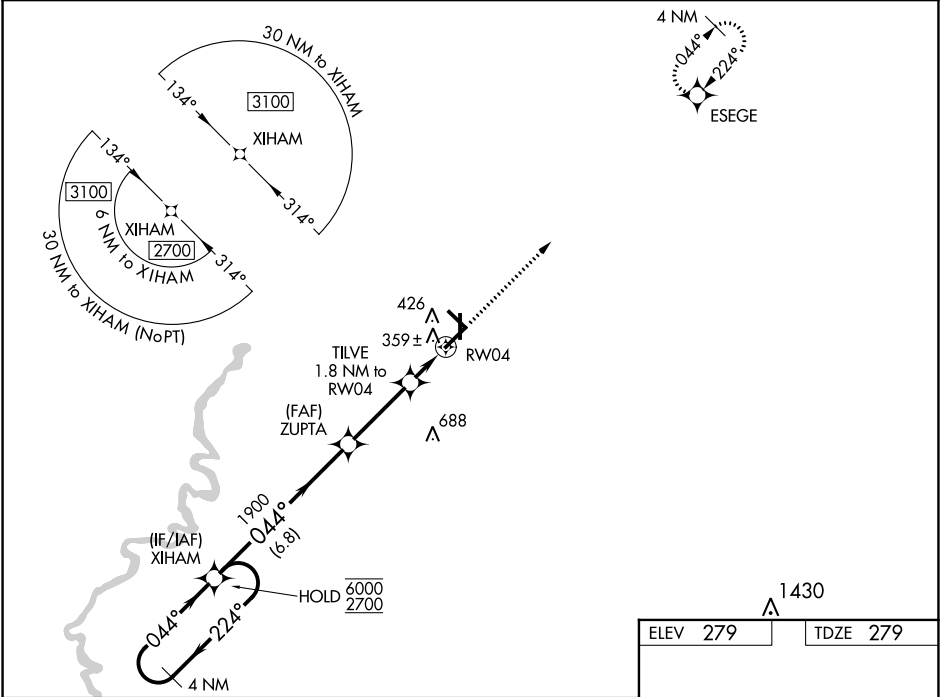
WAAS CH <b>77825</b> <b>W04A</b>	APP CRS <b>044°</b>	Rwy Idg TDZE Apt Elev	<b>6001</b> <b>279</b> <b>279</b>
--	------------------------	-----------------------------	---

# RNAV (GPS) RWY 4

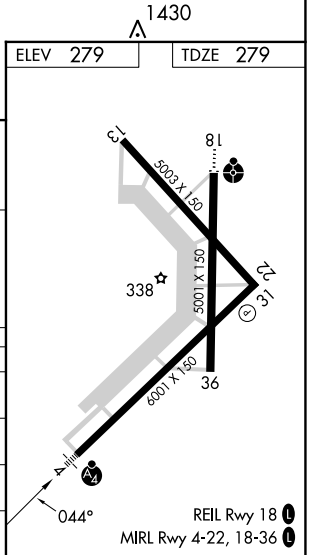
WALNUT RIDGE RGNL (A.R.G)

RNP APCH - GPS.	MALSF	MISSED APPROACH: Climb to 2700 direct ESEGE and hold.
<p>⚠ For uncompensated Baro-VNAV systems, LNAV/VNAV NA below -1.5°C or above 54°C. For inop ALS, increase LNAV Cat C/D visibility to 1½ SM. Inop table does not apply to LPV and LNAV/VNAV all Cats.</p>		

AWOS-3PT <b>126.525</b>	MEMPHIS CENTER <b>120.075 289.4</b>	UNICOM <b>122.8 (CTAF) 0</b>
----------------------------	--	---------------------------------



CATEGORY	A	B	C	D
LPV DA		529-¾	250 (300-¾)	
LNAV/VNAV DA		529-¾	250 (300-¾)	
LNAV MDA		620-¾	341 (400-¾)	
CIRCLING	840-1	561 (600-1)	840-1½ 561 (600-1½)	1000-2¼ 721 (800-2¼)



SC-1, 22 FEB 2024 to 21 MAR 2024

SC-1, 22 FEB 2024 to 21 MAR 2024