

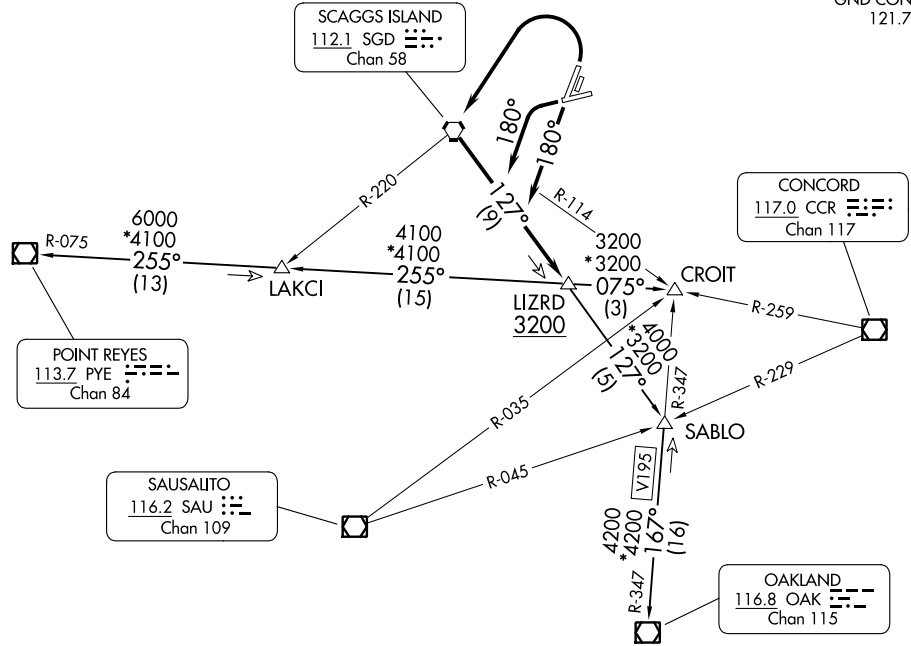
LIZRD FIVE DEPARTURE

AL-281 (FAA)

NAPA COUNTY (APC)
NAPA, CALIFORNIA

**TOP ALTITUDE:
ASSIGNED BY ATC**

OAKLAND CENTER
127.8 353.5
ATIS
124.05
CLNC DEL
127.85
GND CON
121.7



TAKEOFF MINIMUMS

Rwy 6: NA-Obstacles.

Rwys 19L/R: Standard

Rwys 1L/R: Standard with minimum climb of 370' per NM to 1200'.

Rwy 24: Standard with minimum climb of 255' per NM to 3000'.

NOTE: Chart not to scale.



DEPARTURE ROUTE DESCRIPTION

TAKEOFF RUNWAYS 1L/R: Climbing left turn direct SGD VORTAC, proceed outbound on the SGD R-127 to LIZRD INT. Cross LIZRD INT at or above 3200. Thence. . .

TAKEOFF RUNWAYS 19L/R: Climb on heading 180° to intercept and proceed outbound on the SGD R-127 to LIZRD INT. Cross LIZRD INT at or above 3200. Thence. . .

TAKEOFF RUNWAY 24: Climbing left turn on heading 180° to intercept and proceed outbound on the SGD R-127 to LIZRD INT. Cross LIZRD INT at or above 3200. Thence. . .

. . . on (transition) or (assigned route). Maintain ATC assigned altitude.

CROIT TRANSITION (LIZRD5.CROIT): From over LIZRD on PYE R-075 to CROIT.

OAKLAND TRANSITION (LIZRD5.OAK): From over LIZRD on SGD R-127 and OAK R-347 to OAK VOR/DME.

POINT REYES TRANSITION (LIZRD5.PYE): From over LIZRD on PYE R-075 to PYE VOR/DME.

LIZRD FIVE DEPARTURE

(LIZRD5.LIZRD) 10OCT19

NAPA, CALIFORNIA
NAPA COUNTY (APC)

SW-2, 22 FEB 2024 to 21 MAR 2024

SW-2, 22 FEB 2024 to 21 MAR 2024

MERLOT THREE DEPARTURE

AL-281 (FAA)

NAPA COUNTY (APC)
NAPA, CALIFORNIA

OAKLAND CENTER
127.8 353.5
ATIS
124.05
CLNC DEL
127.85
GND CON
121.7
NAPA TOWER★
118.7 (CTAF) 257.8

**TOP ALTITUDE:
ASSIGNED BY ATC**

TAKEOFF MINIMUMS

Rwy 1L: Standard with minimum climb of 420' per NM to 2900.
Rwy 1R: Standard with minimum climb of 460' per NM to 3000.
Rwy 6: Standard with minimum climb of 430' per NM to 1600.
Rwy 19L: Standard with minimum climb of 320' per NM to 1500.
Rwy 19R: Standard with minimum climb of 330' per NM to 1600.
Rwy 24: Standard with minimum climb of 255' per NM to 1300.

RED BLUFF
115.7 RBL
Chan 104

WILLIAMS
114.4 IIA
Chan 91

MENDOCINO
112.3 ENI
Chan 70

SACRAMENTO
115.2 SAC
Chan 99

SCAGGS ISLAND
112.1 SGD
Chan 58

LINDEN
114.8 LIN
Chan 95

POINT REYES
113.7 PYE
Chan 84

CONCORD
117.0 CCR
Chan 117

SAUSALITO
116.2 SAU
Chan 109

OAKLAND
116.8 OAK
Chan 115

SW-2, 22 FEB 2024 to 21 MAR 2024

SW-2, 22 FEB 2024 to 21 MAR 2024

(CONTINUED ON FOLLOWING PAGE)

NOTE: RADAR required.

NOTE: Chart not to scale.



DEPARTURE ROUTE DESCRIPTION

TAKEOFF RUNWAYS 1L/R: Climb on heading 006° (or climbing left turn on ATC assigned heading 186° CW 006°); thence. . . .

TAKEOFF RUNWAY 6: Climbing right turn on assigned heading between 130° CW 242°; thence. . . .

TAKEOFF RUNWAYS 19L/R: Climb on heading 186° (or ATC assigned heading 130° CW 270°); thence. . . .

TAKEOFF RUNWAY 24: Climb on heading 242° (or ATC assigned heading 130° CW 270°); thence. . . .

. . . . expect vectors to join assigned route. Maintain ATC assigned altitude; expect filed altitude/flight level ten minutes after departure.

LOST COMMUNICATIONS

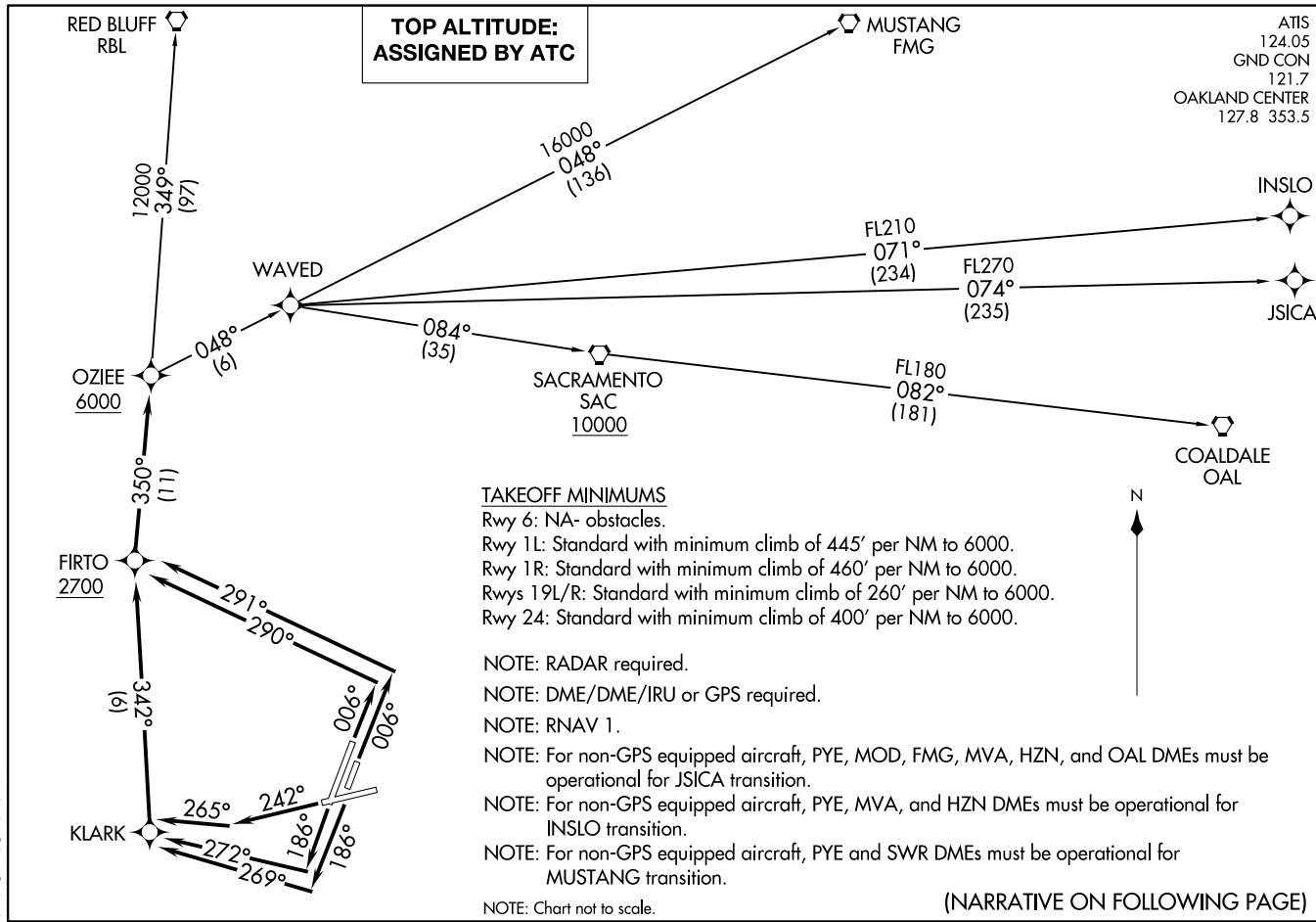
If not in contact with Oakland Center after reaching 4000, proceed to the SGD VORTAC and hold.

SW-2, 22 FEB 2024 to 21 MAR 2024

SW-2, 22 FEB 2024 to 21 MAR 2024

OZIEE FOUR DEPARTURE (RNAV)
(OZIEE4,OZIEE) 100CT19

NAPA, CALIFORNIA
NAPA COUNTY (ATPC)



(OZIEE4,OZIEE) 19288
OZIEE FOUR DEPARTURE (RNAV)

AL-281 (FAA)

NAPA COUNTY (ATPC)
NAPA, CALIFORNIA



DEPARTURE ROUTE DESCRIPTION

TAKEOFF RUNWAY 1L: Climb on heading 006° to intercept course 290° to FIRTO at or above 2700, then on track 350° to OZIEE at or above 6000, thence. . . .

TAKEOFF RUNWAY 1R: Climb on heading 006° to intercept course 291° to FIRTO at or above 2700, then on track 350° to OZIEE at or above 6000, thence. . . .

TAKEOFF RUNWAY 19L: Climb on heading 186° to intercept course 269° to KLARK, then on track 342° to FIRTO at or above 2700, then on track 350° to OZIEE at or above 6000, thence. . . .

TAKEOFF RUNWAY 19R: Climb on heading 186° to intercept course 272° to KLARK, then on track 342° to FIRTO at or above 2700, then on track 350° to OZIEE at or above 6000, thence. . . .

TAKEOFF RUNWAY 24: Climb on heading 242° to intercept course 265° to KLARK, then on track 342° to FIRTO at or above 2700, then on track 350° to OZIEE at or above 6000, thence. . . .

. . . .on (transition). Maintain ATC assigned altitude. Expect filed altitude 10 minutes after departure.

COALDALE TRANSITION (OZIEE4.OAL)

INSLO TRANSITION (OZIEE4.INSLO)

JSICA TRANSITION (OZIEE4.JSICA)

MUSTANG TRANSITION (OZIEE4.FMG)

RED BLUFF TRANSITION (OZIEE4.RBL)

SW-2, 22 FEB 2024 to 21 MAR 2024

SW-2, 22 FEB 2024 to 21 MAR 2024