

GATEWAY ONE DEPARTURE
(GATWY1.TWILA) 08NOV18

ATIS
128.0
CLNC DEL
120.2 (when tower closed)
GND CON
120.2
REGIONAL TOWER ★
126.0 239.0
ST LOUIS DEP CON
124.2 353.9

TOP ALTITUDE:
ASSIGNED BY ATC

TAKEOFF MINIMUMS
Rwys 11, 17, 29, 35: Standard.

ST. LOUIS
117.4 STL
Chan 121

BIBLE GROVE
109.0 BIB
Chan 27

TERRE HAUTE
115.3 TTH
Chan 100

BRICKYARD
116.3 VHP
Chan 110

ROSEWOOD
117.5 ROD
Chan 122

094°
(44)

076°
(17)

076°
(21)

078°
(30)

067°
(35)

071°
(41)

029°
(28)

075°
(72)

063°
(91)

116.15 SHB
Chan 108(Y)

TROY
116.0 TOY
Chan 107

CENTRALIA
115.0 ENL
Chan 97

NOTE: RADAR required.
NOTE: BRICKYARD transition, CREEP transition, and
ROSEWOOD transition: DME required.



(CONTINUED ON FOLLOWING PAGE)

NOTE: Chart not to scale.

ALTON/ST. LOUIS, ILLINOIS
ST LOUIS RGNL (ALN)

(GATWY1.TWILA) 24025
GATEWAY ONE DEPARTURE

AL-5178 (FAA)

ST LOUIS RGNL (ALN)
ALTON/ST. LOUIS, ILLINOIS



DEPARTURE ROUTE DESCRIPTION

Climb on assigned heading for vector to appropriate route, maintain 2500 or assigned altitude, thence. . . .

. . . .from over TOY VORTAC on TOY R-076 or over STL VORTAC on STL R-094 to TWILA INT. Then on (transition), expect clearance to filed altitude 10 minutes after departure.

BIBLE GROVE TRANSITION (GATWY1.BIB): From over TWILA on TOY R-076 to JIGSY, then on BIB R-258 to BIB VORTAC.

BRICKYARD TRANSITION (GATWY1.VHP): From over TWILA on TOY R-076 to JIGSY, then on BIB R-258 to BIB VORTAC, then on BIB R-067 to WORKE, then on BIB R-067 and SHB R-251 to KELLY, then on VHP R-209 to VHP VORTAC.

CREEP TRANSITION (GATWY1.CREEP): From over TWILA on TOY R-076 to JIGSY, then on BIB R-258 to BIB VORTAC, then on BIB R-067 to WORKE, then on BIB R-067 and SHB R-251 to KELLY, then on SHB R-251 to SHB VOR/DME, then on SHB R-075 to CREEP.

JIGSY TRANSITION (GATWY1.JIGSY): From over TWILA on TOY R-076 to JIGSY.

ROSEWOOD TRANSITION (GATWY1.ROD): From over TWILA on TOY R-076 to JIGSY, then on BIB R-258 to BIB VORTAC, then on BIB R-067 to WORKE, then on BIB R-067 and SHB R-251 to KELLY, then on SHB R-251 to SHB VOR/DME, then on SHB R-063 and ROD R-250 to ROD VORTAC.

EC-3, 22 FEB 2024 to 21 MAR 2024

EC-3, 22 FEB 2024 to 21 MAR 2024

(LINDY8.STL) 24025

LINDBERGH EIGHT DEPARTURE

AL-5178 (FAA)

ST LOUIS RGNL (ALN)
ALTON/ST. LOUIS, ILLINOIS

ATIS
128.0
CLNC DEL
120.2 (when twr closed)
GND CON
120.2
REGIONAL TOWER*
126.0 239.0
ST LOUIS DEP CON
124.2 353.9

TOP ALTITUDE:
2500

ST. LOUIS
117.4 STL
Chan 121

VICHY
117.7 VIH
Chan 124

FARMINGTON
115.7 FAM
Chan 104

LITTLE ROCK
113.9 LIT
Chan 86

WALNUT RIDGE
114.5 ARG
Chan 92

EC-3, 22 FEB 2024 to 21 MAR 2024

EC-3, 22 FEB 2024 to 21 MAR 2024

TAKEOFF MINIMUMS

Rwys 11, 17, 29, 35: Standard.

NOTE: DME and RADAR required.

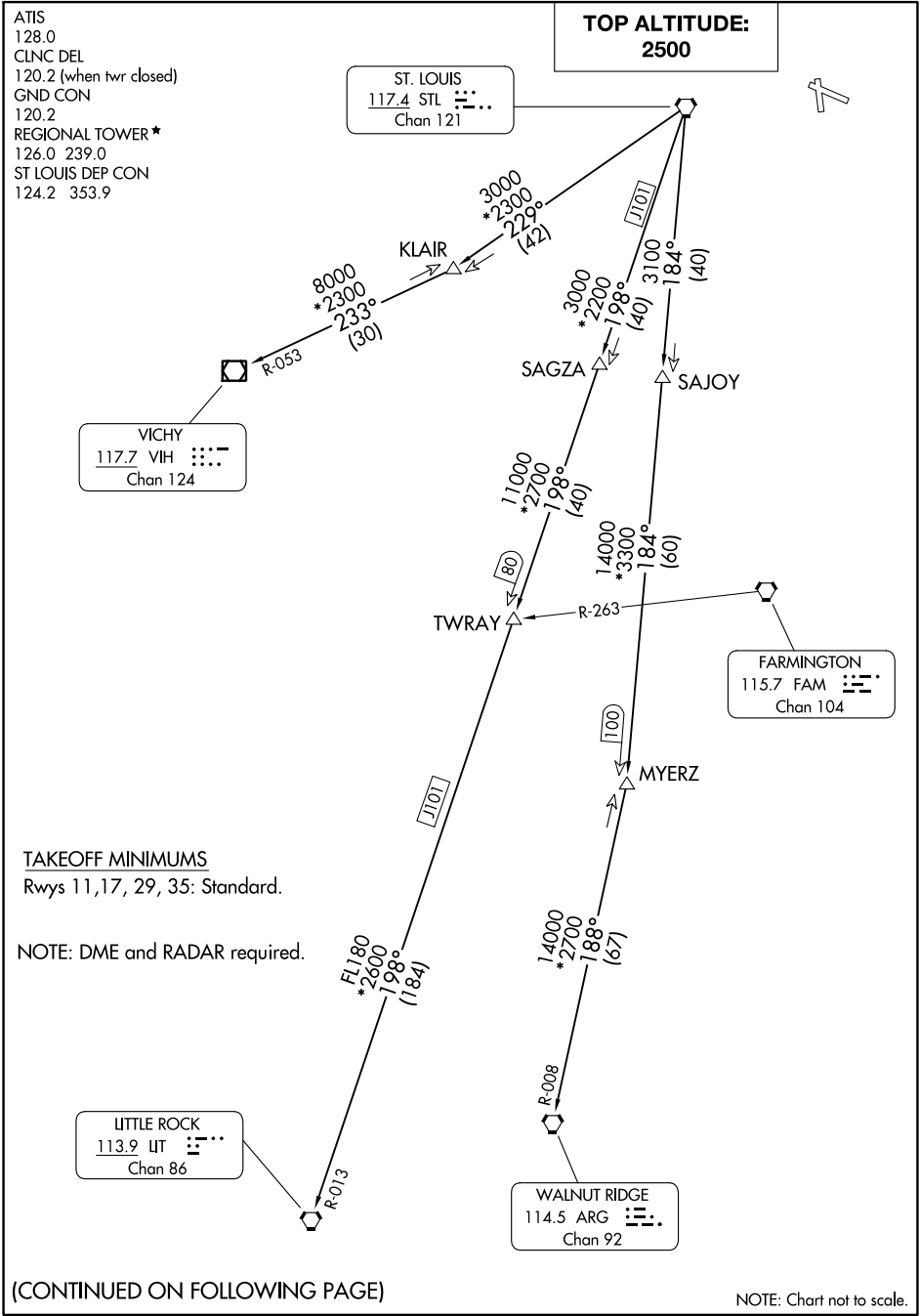
(CONTINUED ON FOLLOWING PAGE)

NOTE: Chart not to scale.

LINDBERGH EIGHT DEPARTURE

(LINDY8.STL) 17JUN21

ALTON/ST. LOUIS, ILLINOIS
ST LOUIS RGNL (ALN)





DEPARTURE ROUTE DESCRIPTION

Climb on assigned heading for vector to appropriate route, maintain 2500 or assigned altitude, thence

. . . . (transition). Expect filed altitude 10 minutes after departure.

LITTLE ROCK TRANSITION (LINDY8.LIT): From over STL VORTAC on STL R-198 to TWRAY, then on STL R-198 and LIT R-013 to LIT VORTAC.

MYERZ TRANSITION (LINDY8.MYERZ): From over STL VORTAC on STL R-184 to MYERZ.

VICHY TRANSITION (LINDY8.VIH): From over STL VORTAC on STL R-229 to KLAIR, then on VIH R-053 to VIH VOR/DME.

WALNUT RIDGE TRANSITION (LINDY8.ARG): From over STL VORTAC on STL R-184 to MYERZ, then on ARG R-008 to ARG VORTAC.

EC-3, 22 FEB 2024 to 21 MAR 2024

EC-3, 22 FEB 2024 to 21 MAR 2024

OZARK EIGHT DEPARTURE
(OZARK8.STL) 07OCT21

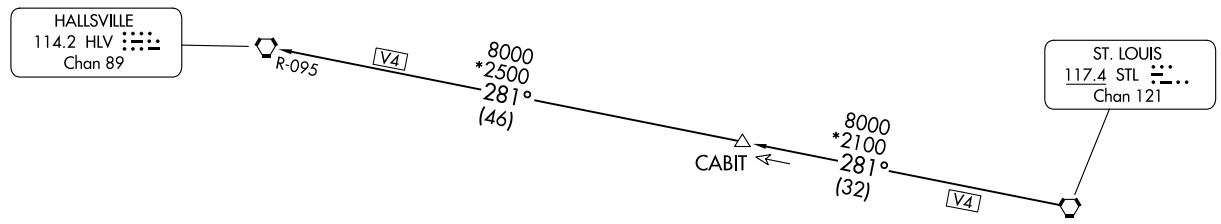
(OZARK8.STL) 24025
OZARK EIGHT DEPARTURE

AL-5178 (FAA)

ST LOUIS RGNL (ALN)
ALTON/ST. LOUIS, ILLINOIS

ATIS 128.0
CLNC DEL 120.2 (when tower closed)
GND CON 120.2
REGIONAL TOWER* 126.0 239.0
ST LOUIS DEP CON 124.2 353.9

TOP ALTITUDE:
2500



NOTE: Chart not to scale.

DEPARTURE ROUTE DESCRIPTION

Climb on assigned heading for vector to appropriate route. Maintain 2500 or assigned altitude, thence. . . .
 (transition). Expect filed altitude 10 minutes after departure.

HALLSVILLE TRANSITION (OZARK8.HLV): From over STL VORTAC on STL R-281 to CABIT, then on STL R-281 and HLV R-095 to HLV VORTAC.

TAKEOFF MINIMUMS
Rwys 11,17, 29, 35: Standard.

NOTE: DME and RADAR required.

ALTON/ST. LOUIS, ILLINOIS
ST LOUIS RGNL (ALN)

PLESS FIVE DEPARTURE
(PLESS5, PLESS) 17AUG17

(PLESS5, PLESS) 24025
PLESS FIVE DEPARTURE

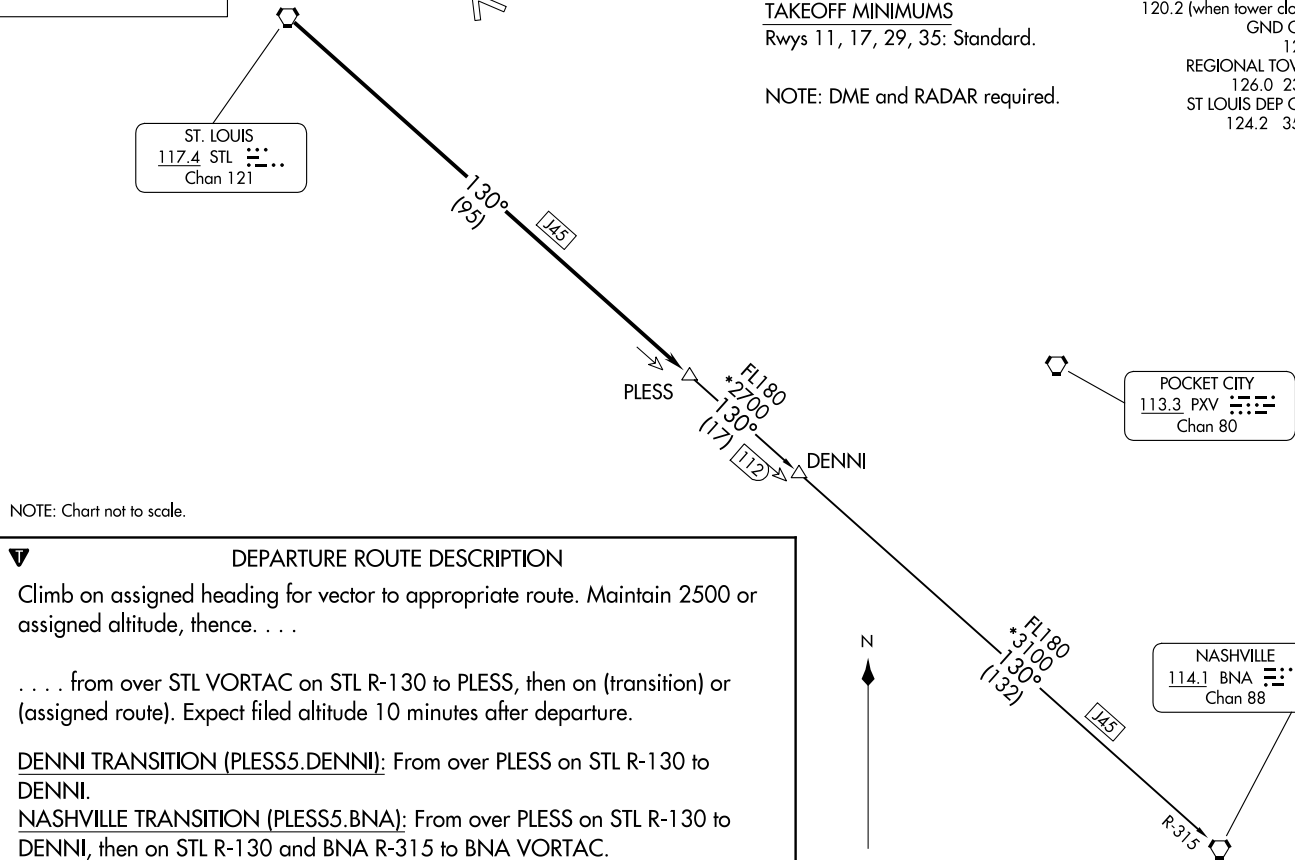
**TOP ALTITUDE:
ASSIGNED BY ATC**

ST. LOUIS
117.4 STL
Chan 121

TAKEOFF MINIMUMS
Rwys 11, 17, 29, 35: Standard.

NOTE: DME and RADAR required.

ATIS 128.0
CLNC DEL 120.2 (when tower closed)
GND CON 120.2
REGIONAL TOWER * 126.0 239.0
ST LOUIS DEP CON 124.2 353.9



NOTE: Chart not to scale.

DEPARTURE ROUTE DESCRIPTION

Climb on assigned heading for vector to appropriate route. Maintain 2500 or assigned altitude, thence. . . .

. . . . from over STL VORTAC on STL R-130 to PLESS, then on (transition) or (assigned route). Expect filed altitude 10 minutes after departure.

DENNI TRANSITION (PLESS5.DENNI): From over PLESS on STL R-130 to DENNI.

NASHVILLE TRANSITION (PLESS5.BNA): From over PLESS on STL R-130 to DENNI, then on STL R-130 and BNA R-315 to BNA VORTAC.

ATON/ST. LOUIS, ILLINOIS
ST LOUIS RGNL (ALN)

AI-5178 (FAA)

ST LOUIS RGNL (ALN)
ATON/ST. LOUIS, ILLINOIS