

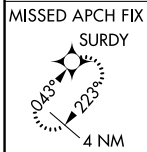
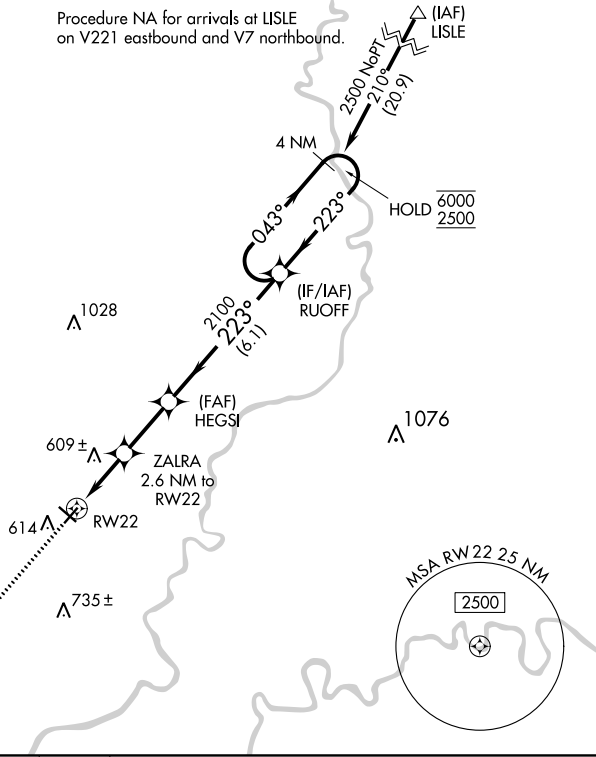
WAAS CH 53317 W22A	APP CRS 223°	Rwy Idg TDZE Apt Elev	4000 429 429
--	------------------------	-----------------------------	---

RNAV (GPS) RWY 22

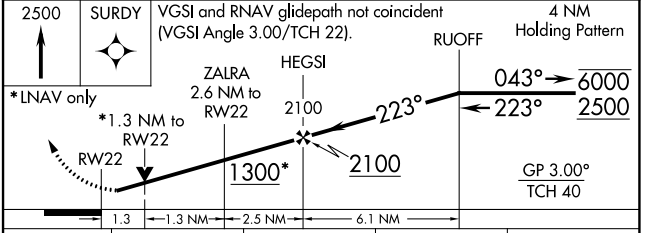
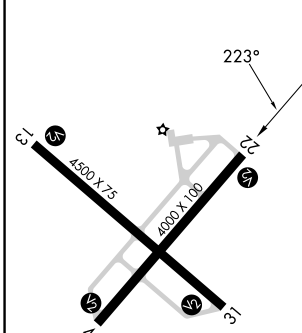
MOUNT CARMEL MUNI (AJG)

RNP APCH. Rwy 22 helicopter visibility reduction below ¾ SM NA.		MISSED APPROACH: Climb to 2500 direct SURDY and hold.
AWOS-3 134.9	EVANSVILLE APP CON★ 125.6 343.7	UNICOM 122.7 (CTAF) 0

Procedure NA for arrivals at LISLE on V221 eastbound and V7 northbound.



ELEV 429	TDZE 429
-----------------	-----------------



CATEGORY	A	B	C	D
LPV DA	679-1 250 (300-1)			NA
LNAV/VNAV DA	888-1¾ 459 (500-1¾)			NA
LNAV MDA	860-1	431 (500-1)	860-1¼ 431 (500-1¼)	NA

EC-3, 22 FEB 2024 to 21 MAR 2024

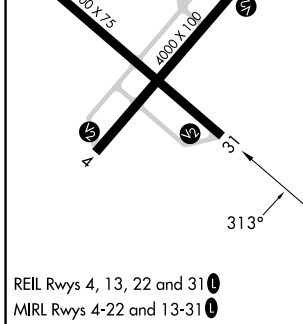
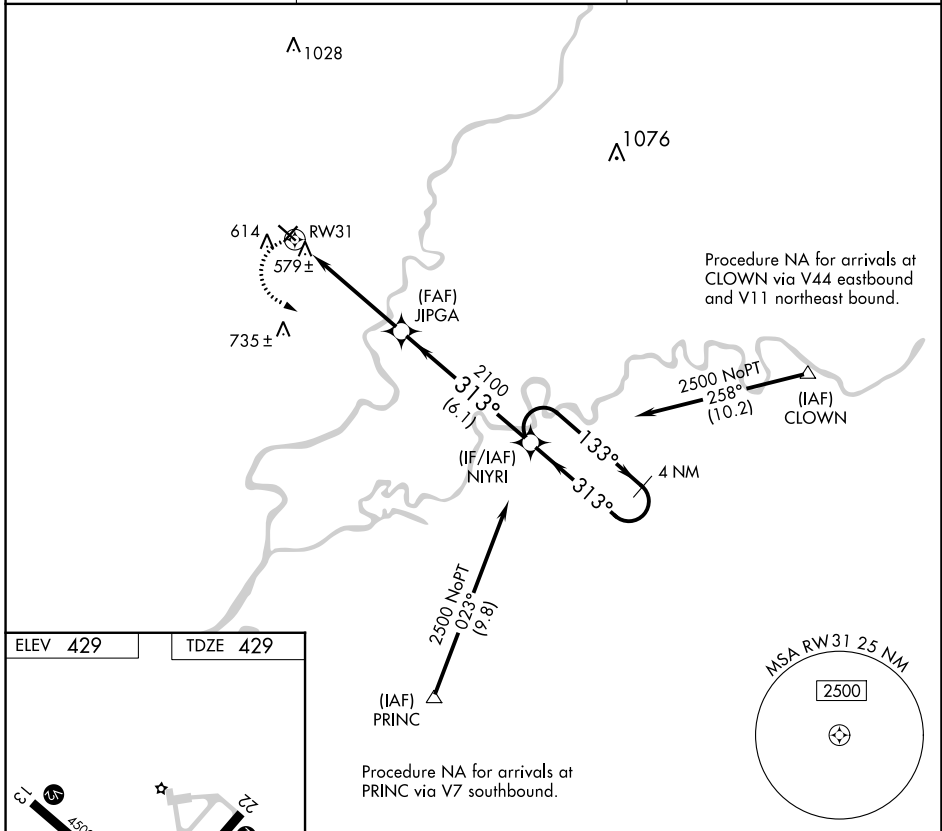
EC-3, 22 FEB 2024 to 21 MAR 2024

APP CRS	Rwy Idg	4500
313°	TDZE	429
	Apt Elev	429

RNAV (GPS) RWY 31

MOUNT CARMEL MUNI (AJG)

RNP APCH.		MISSED APPROACH: Climbing left turn to 2500 direct NIYRI and hold.
<p>NA When local altimeter setting not received, use Lawrenceville altimeter setting and increase all MDA 40 feet and increase LNAV Cat D visibility ½ mile.</p>		
AWOS-3 134.9	EVANSVILLE APP CON★ 125.6 343.7	UNICOM 122.7 (CTAF) 0



2500	NIYRI	VGSi and descent angles not coincident (VGSi Angle 3.00/TCH 25).		4 NM
				Holding Pattern
CATEGORY	A	B	C	D
LNAV MDA	840-1 411 (500-1)		840-1¼ 411 (500-1¼)	

EC-3, 22 FEB 2024 to 21 MAR 2024

EC-3, 22 FEB 2024 to 21 MAR 2024

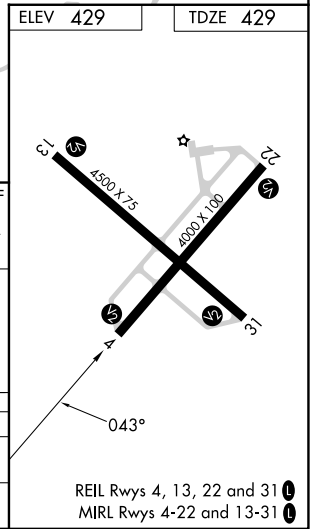
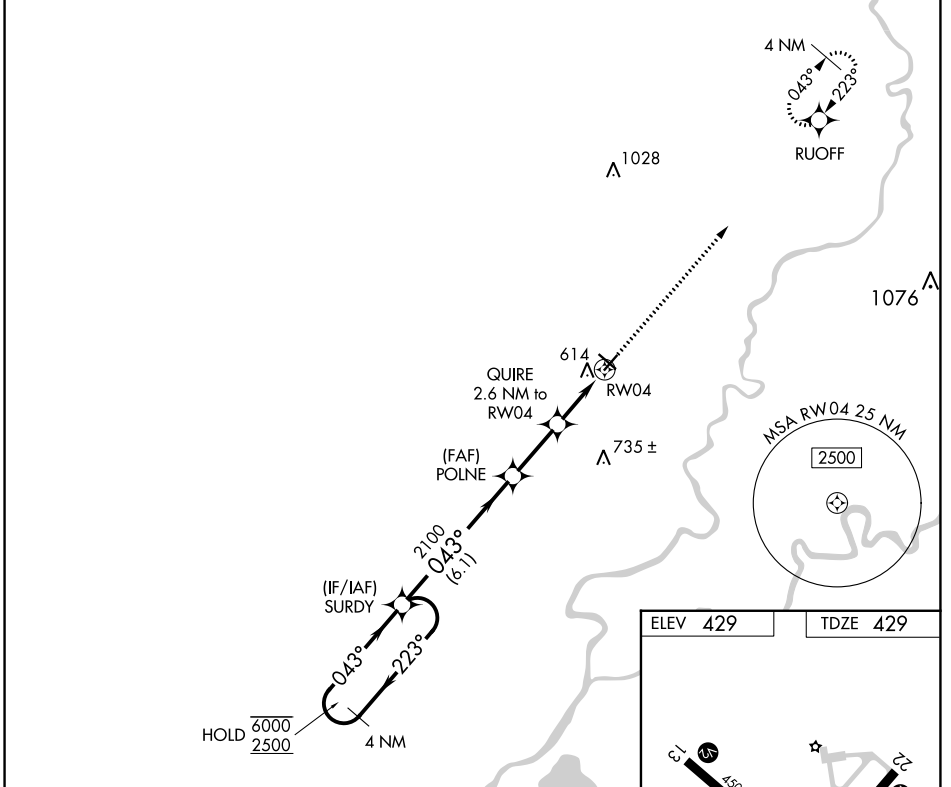
APP CRS	Rwy Idg	4000
043°	TDZE	429
	Apt Elev	429

RNAV (GPS) RWY 4

MOUNT CARMEL MUNI (AJG)

RNP APCH.	MISSED APPROACH: Climb to 2500 direct RUOFF and hold.
<p>▼ Rwy 4 helicopter visibility reduction below 3/4 SM NA. For uncompensated Baro-VNAV systems, LNAV/VNAV NA below -15°C or above 54°C.</p>	

AWOS-3 134.9	EVANSVILLE APP CON★ 125.6 343.7	UNICOM 122.7 (CTAF)
------------------------	---	-------------------------------



4 NM Holding Pattern	SURDY			VGSI and RNAV glidepath not coincident (VGSI Angle 3.00/TCH 23).	2500 RUOFF
6000 ← 223°	← 043° →	043°	POLNE	QUIRE	*LNAV only
2500		2100	2.6 NM to RWY04	1.5 NM to RWY04	
GP 3.00°		*1300			
TCH 40					
	← 6.1 NM →	← 2.5 NM →	← 1.1 NM →	← 1.5 NM →	
CATEGORY	A	B	C	D	
LNAV/VNAV	DA	937-1 3/4	508 (600-1 3/4)	NA	
LNAV MDA		920-1	491 (500-1)	920-1 1/4	491 (500-1 3/4)

EC-3, 22 FEB 2024 to 21 MAR 2024

EC-3, 22 FEB 2024 to 21 MAR 2024