

WAAS CH <b>58138</b> <b>W15A</b>	APP CRS <b>148°</b>	Rwy Idg <b>3999</b> TDZE <b>1067</b> Apt Elev <b>1067</b>
--	------------------------	---

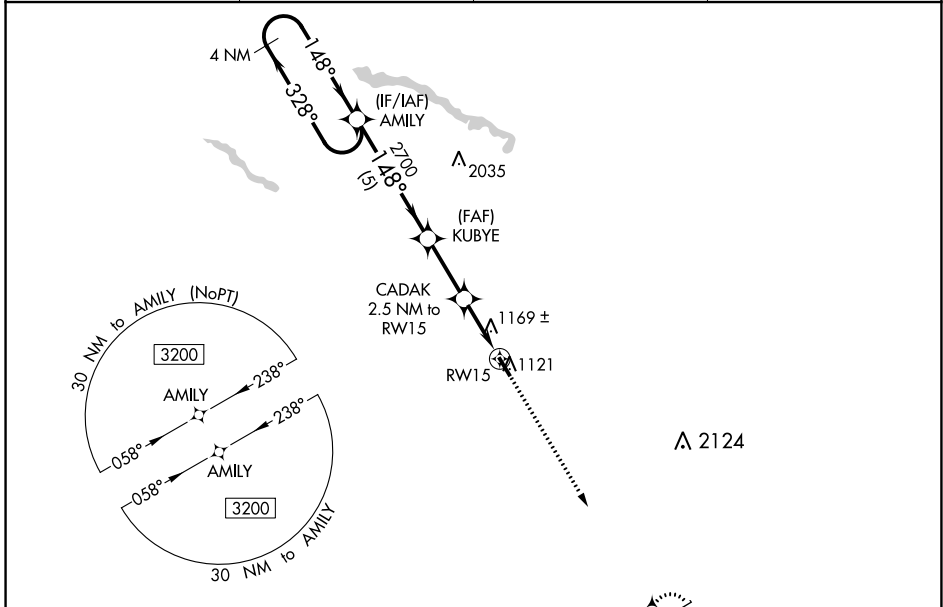
# RNAV (GPS) RWY 15

ST JAMES MUNI (JYG)

**⚠** DME/DME RNP-0.3 NA. For uncompensated Baro-VNAV systems, procedure NA below -17°C (2°F) or above 54°C (130°F). Baro-VNAV and VDP NA when using New Ulm altimeter setting. When local altimeter not received, use New Ulm, MN altimeter setting and increase LPV DA to 1372 feet and LNAV/VNAV DA to 1530 feet, and all MDA 60 feet.

MISSED APPROACH: Climb to 3200 direct PUGJU and hold.

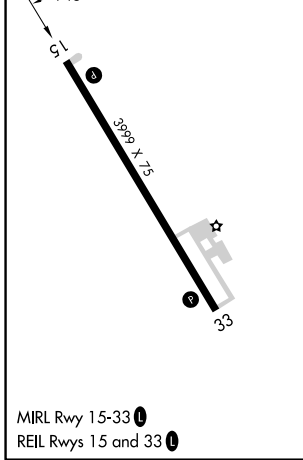
AWOS-3PT <b>123.7</b>	MINNEAPOLIS CENTER <b>127.75 257.7</b>	GCO <b>121.725</b>	CTAF <b>122.9</b> <b>Ⓛ</b>
--------------------------	---	-----------------------	-------------------------------



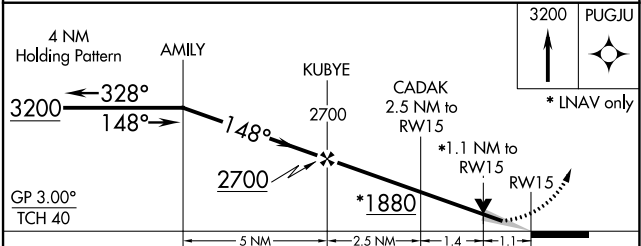
NC-1, 22 FEB 2024 to 21 MAR 2024

NC-1, 22 FEB 2024 to 21 MAR 2024

ELEV 1067	TDZE 1067
-----------	-----------



MIRL Rwy 15-33 **Ⓛ**  
REIL Rwy 15 and 33 **Ⓛ**



CATEGORY	A	B	C	D
LPV DA	1317-1	250 (300-1)		NA
LNAV/VNAV DA	1475-1 <sup>3</sup> / <sub>8</sub>	408 (500-1 <sup>3</sup> / <sub>8</sub> )		NA
LNAV MDA	1420-1	353 (400-1)		NA
<b>Ⓛ</b> CIRCLING	1500-1 433 (500-1)	1520-1 453 (500-1)		NA