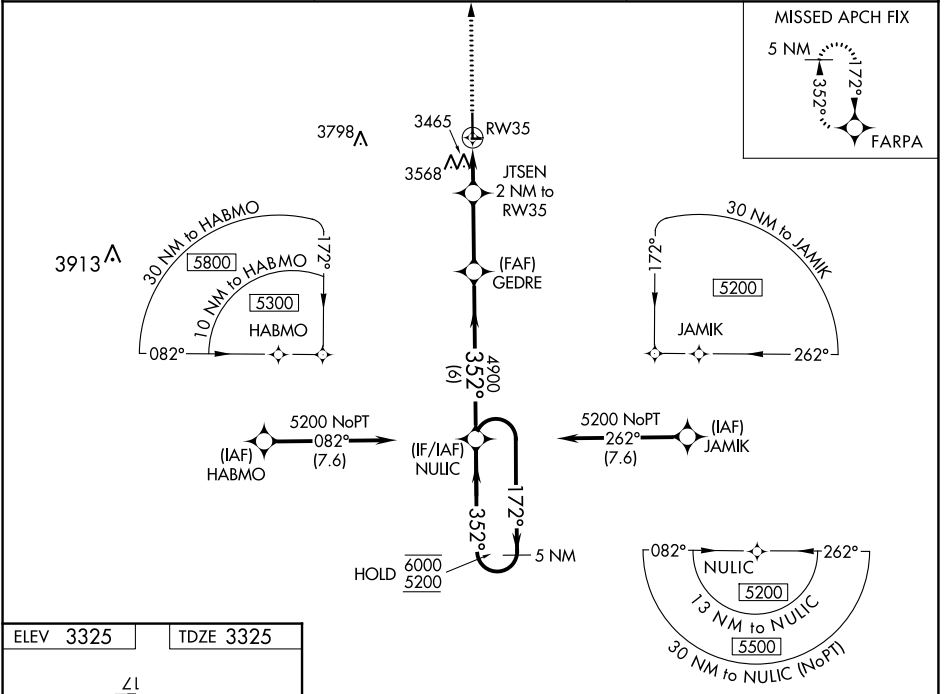


WAAS CH 50243 W35A	APP CRS 352°	Rwy Idg TDZE Apt Elev	5200 3325 3325
--	------------------------	-----------------------------	---

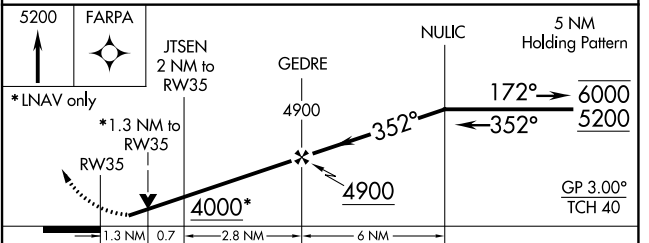
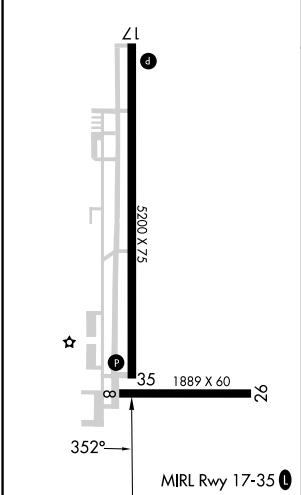
RNAV (GPS) RWY 35

STANTON COUNTY MUNI (JHN)

RNP APCH.		MISSED APPROACH: Climb to 5200 direct FARPA and hold.
AWOS-3PT 124.175	KANSAS CITY CENTER 125.2 285.425	UNICOM 122.8 (CTAF) 0



ELEV 3325	TDZE 3325
-----------	-----------



CATEGORY	A	B	C	D
LPV DA		3575-1	250 (300-1)	
LNAV/VNAV DA		3808-1 $\frac{3}{8}$	483 (500-1 $\frac{3}{8}$)	
LNAV MDA	3780-1	455 (500-1)	3780-1 $\frac{3}{8}$	455 (500-1 $\frac{3}{8}$)
<input checked="" type="checkbox"/> CIRCLING	3880-1	555 (600-1)	4040-2 715 (800-2)	4040-2 $\frac{1}{4}$ 715 (800-2 $\frac{1}{4}$)

NC-2, 22 FEB 2024 to 21 MAR 2024

NC-2, 22 FEB 2024 to 21 MAR 2024