

WAAS CH <b>53524</b> <b>W25A</b>	APP CRS <b>252°</b>	Rwy Idg TDZE Apt Elev	<b>4299</b> <b>2653</b> <b>2653</b>
--	------------------------	-----------------------------	---

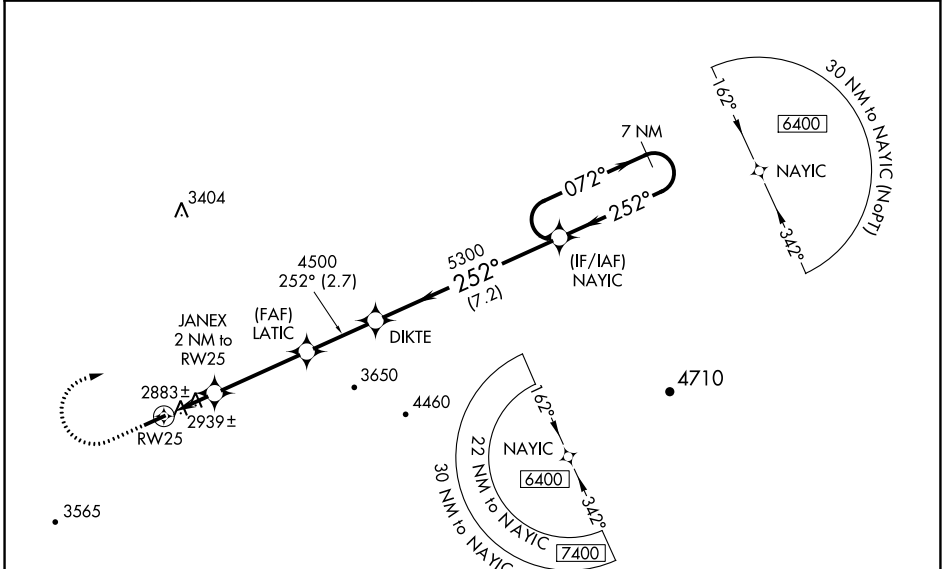
# RNAV (GPS) RWY 25

TAZEWELL COUNTY (JFZ)

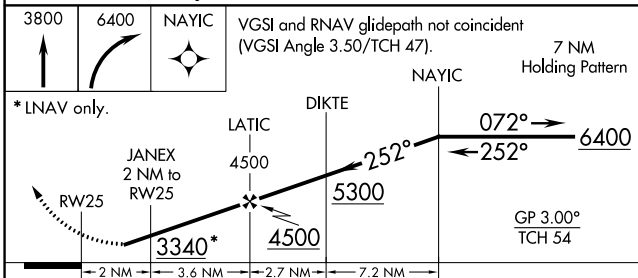
Baro-VNAV NA when using Wise altimeter setting. For uncompensated Baro-VNAV systems, LNAV/VNAV NA below -20°C (-4°F) or above 54°C (130°F). DME/DME RNP-0.3 NA. Visibility reduction by helicopters NA. When local altimeter setting not received, use Wise altimeter setting and increase all DA 86 feet and all MDA 100 feet, increase LPV and LNAV/VNAV all Cats and Circling Cat C visibility 3/8 mile, increase LNAV Cat C visibility 1/4 mile. When VGSI inop, Straight-in/Circling Rwy 25 procedure NA at night. When VGSI inop, Circling Rwy 7 NA at night. Circling NA for Cat C south of Rwy 7-25.

**MISSED APPROACH:**  
Climb to 3800 then climbing right turn to 6400 direct NAYIC and hold, continue climb-in-hold to 6400.

AWOS-3 <b>118.075</b>	ATLANTA CENTER <b>127.85 269.3</b>	GCO <b>135.075</b>	UNICOM <b>123.05 (CTAF) 0</b>
--------------------------	---------------------------------------	-----------------------	----------------------------------



3800 6400 NAYIC VGSI and RNAV glidepath not coincident (VGSI Angle 3.50/TCH 47). 7 NM Holding Pattern



CATEGORY	A	B	C	D
LPV DA	3201-1 7/8	548 (600-1 7/8)		NA
LNAV/VNAV DA	3210-1 7/8	557 (600-1 7/8)		NA
LNAV MDA	3200-1 547 (600-1)		3200-1 5/8 547 (600-1 5/8)	NA
<b>C</b> CIRCLING	3240-1 587 (600-1)		3240-1 5/8 587 (600-1 5/8)	NA

ELEV 2653	TDZE 2653
-----------	-----------

A small diagram showing the final approach segment of RNAV (GPS) RWY 25. It indicates a heading of 252° and a distance of 7 NM. The diagram also shows the location of the runway and the MDA (4299 x 75).

MIRL Rwy 7-25 0  
REIL Rwys 7 and 25 0

NE-3, 22 FEB 2024 to 21 MAR 2024

NE-3, 22 FEB 2024 to 21 MAR 2024