

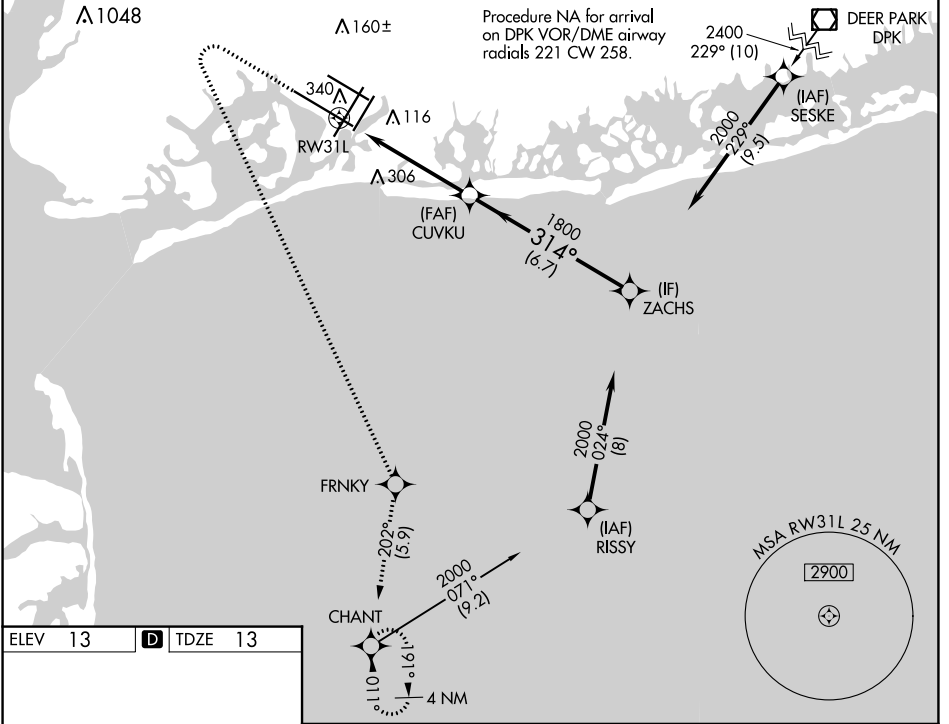
WAAS CH 50119 W31A	APP CRS 314°	Rwy Idg 11247 TDZE 13 Apt Elev 13
--	------------------------	--

RNAV (GPS) Y RWY 31L

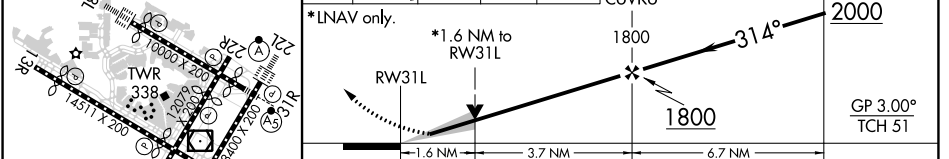
JOHN F KENNEDY INTL (JFK)

RNP APCH.	MISSED APPROACH: Climb to 500 then climbing left turn to 3000 direct FRNKY and on track 202° to CHANT and hold.
<p>Simultaneous approach authorized. For uncompensated Baro-VNAV systems, LNAV/VNAV NA below -12°C or above 54°C. Use of FD or AP required during simultaneous operations. LNAV procedure NA during simultaneous operations.</p>	

D-ATIS (ARR/DEP) (ARR-NE) (ARR-SW) 128.725 117.7 115.4	NEW YORK APP CON 128.125 269.0	KENNEDY TOWER Rwys 4R/22L and 13L/31R 119.1 281.55 Rwys 4L/22R and 13R/31L 123.9 281.55	GND CON 121.9 348.6	CLNC DEL 135.05 348.6	CPDLC
---	--	---	-------------------------------	---------------------------------	-------



500	3000	FRNKY	CHANT	tr 202°	VGSI and RNAV glidepath not coincident (VGSI Angle 3.00/TCH 74).
-----	------	-------	-------	---------	--



CATEGORY	A	B	C	D
LPV DA		213/40	200 (200-¾)	
LNAV/VNAV DA		541-1¾	528 (600-1¾)	
LNAV MDA	600/55	587 (600-1)	600-1¾	587 (600-1¾)
C CIRCLING	640-1	627 (700-1)	680-1¾ 667 (700-1¾)	680-2 667 (700-2)

RLS Rwys 13L and 13R
HIRL all Rwys
TDZ/CL Rwys 4L, 4R, 13L, 22L and 31R

NE-2, 22 FEB 2024 to 21 MAR 2024

NE-2, 22 FEB 2024 to 21 MAR 2024