

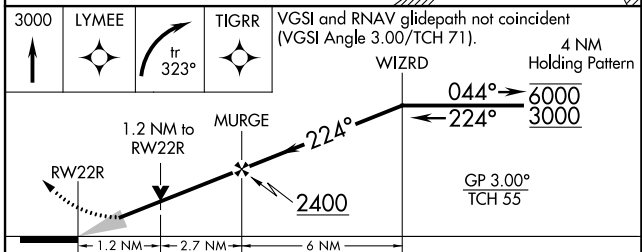
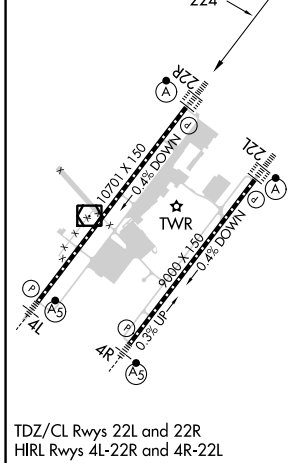
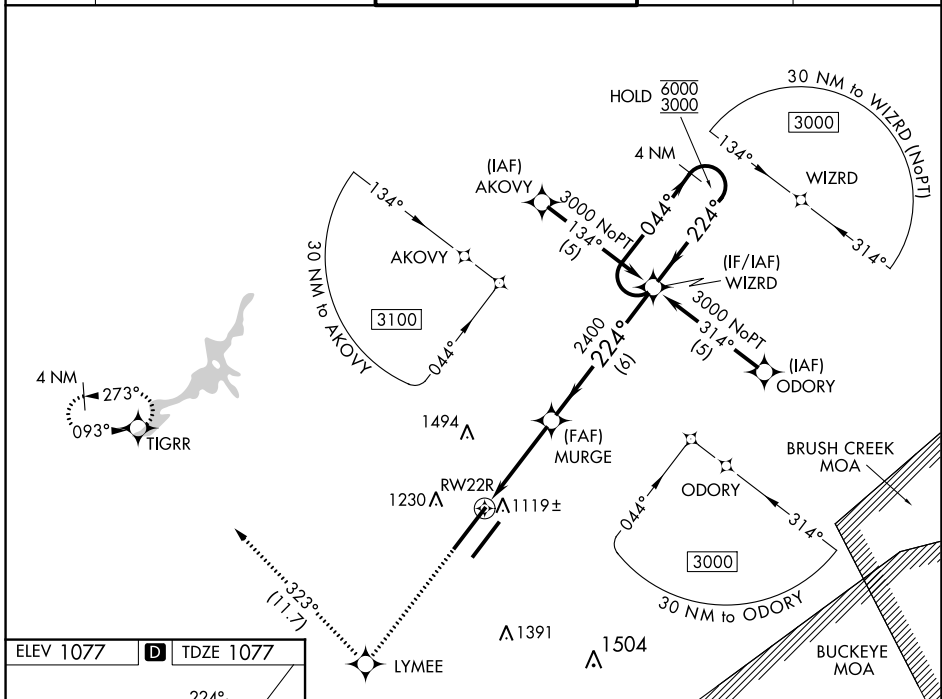
WAAS CH <b>40214</b> <b>W22A</b>	APP CRS <b>224°</b>	Rwy Idg TDZE <b>10701</b> Apt Elev <b>1077</b>
--	------------------------	--

# RNAV (GPS) RWY 22R

WILMINGTON AIR PARK (ILN)

RNP APCH - GPS.		ALSF-2	MISSED APPROACH: Climb to 3000 direct LYMEE and right turn on track 323° to TIGRR and hold.	
<p><b>⚠</b> For uncompensated Baro-VNAV systems, LNAV/VNAV NA below -17°C or above 54°C. For inop ALS, increase LNAV/VNAV all Cats visibility to RVR 6000, LNAV Cats A/B to RVR 5500, and LNAV Cats C/D to 1 3/8 SM.</p>		<b>A</b>		

D-ATIS <b>124.925</b>	COLUMBUS APP CON <b>118.85 269.275</b>	WILMINGTON TOWER <b>119.475</b>	GND CON <b>121.6</b>	CLNC DEL <b>128.85</b>
--------------------------	---	------------------------------------	-------------------------	---------------------------



CATEGORY	A	B	C	D
LPV DA		1277/18	200 (200-1/2)	
LNAV/VNAV DA		1497/40	420 (500-3/4)	
LNAV MDA	1540/24	463 (500-1/2)	1540/50	463 (500-1)
<b>C</b> CIRCLING	1540-1	463 (500-1)	1860-2 1/4 783 (800-2 1/4)	1860-2 1/2 783 (800-2 1/2)

WILMINGTON, OHIO  
Orig-D 12AUG21

39°26'N-83°48'W

# WILMINGTON AIR PARK (ILN) RNAV (GPS) RWY 22R

EC-2, 22 FEB 2024 to 21 MAR 2024

EC-2, 22 FEB 2024 to 21 MAR 2024