

WAAS CH <b>72730</b> <b>W22A</b>	APP CRS <b>222°</b>	Rwy Idg TDZE Apt Elev	<b>5981</b> <b>630</b> <b>630</b>
--	------------------------	-----------------------------	---

# RNAV (GPS) RWY 22

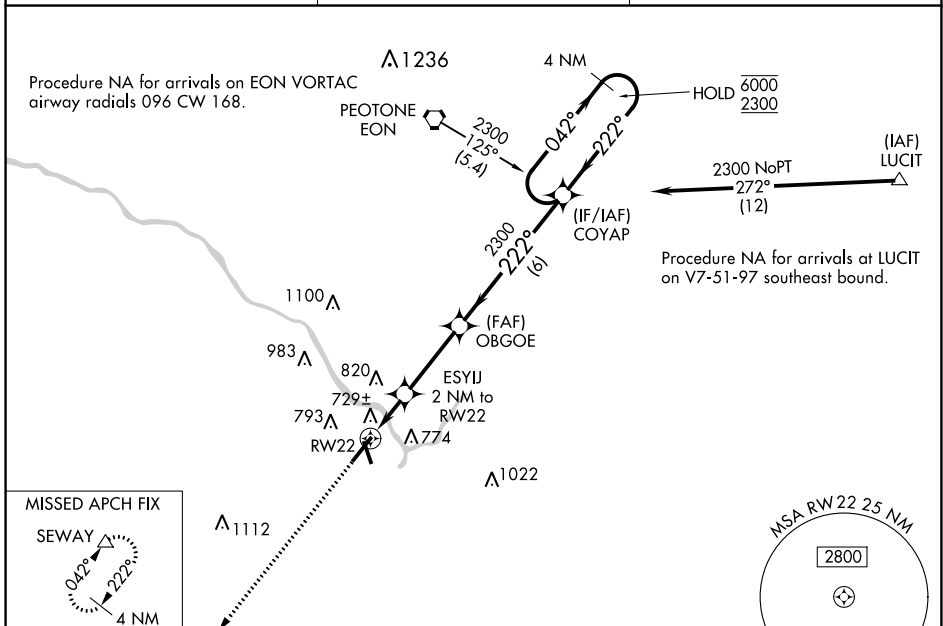
GREATER KANKAKEE (IKK)

RNP APCH.

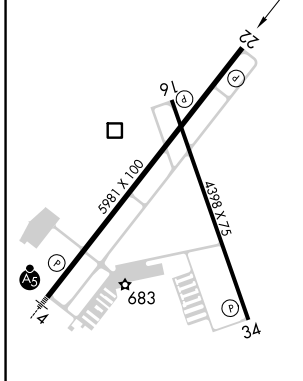
**⚠** Circling Rwy 16, 34 NA at night. Rwy 22 helicopter visibility reduction below ¾ SM NA.  
**⚠** For uncompensated Baro-VNAV systems, LNAV/VNAV NA below -16°C or above 54°C.

MISSED APPROACH:  
 Climb to 2300 direct SEWAY and hold.

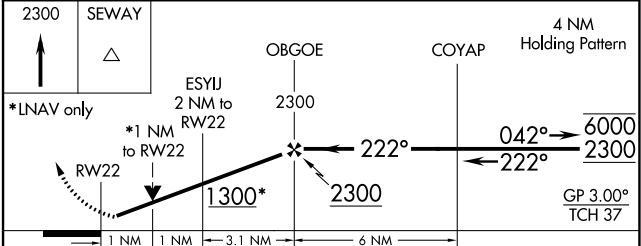
AWOS-3 <b>128.475</b>	CHICAGO CENTER <b>132.5 284.7</b>	UNICOM <b>123.0 (CTAF) 0</b>
--------------------------	--------------------------------------	---------------------------------



ELEV 630	TDZE 630
----------	----------



- REIL Rwy 22 **0**
- HIRL Rwy 4-22 **0**
- MIRL Rwy 16-34 **0**



CATEGORY	A	B	C	D
LPV DA		880-7/8	250 (300-7/8)	
LNAV/VNAV DA		910-1	280 (300-1)	
LNAV MDA		980-1	350 (400-1)	
<b>C</b> CIRCLING	1080-1 450 (500-1)	1100-1 470 (500-1)	1140-1½ 510 (600-1½)	1340-2¼ 710 (800-2¼)

EC-3, 22 FEB 2024 to 21 MAR 2024

EC-3, 22 FEB 2024 to 21 MAR 2024