

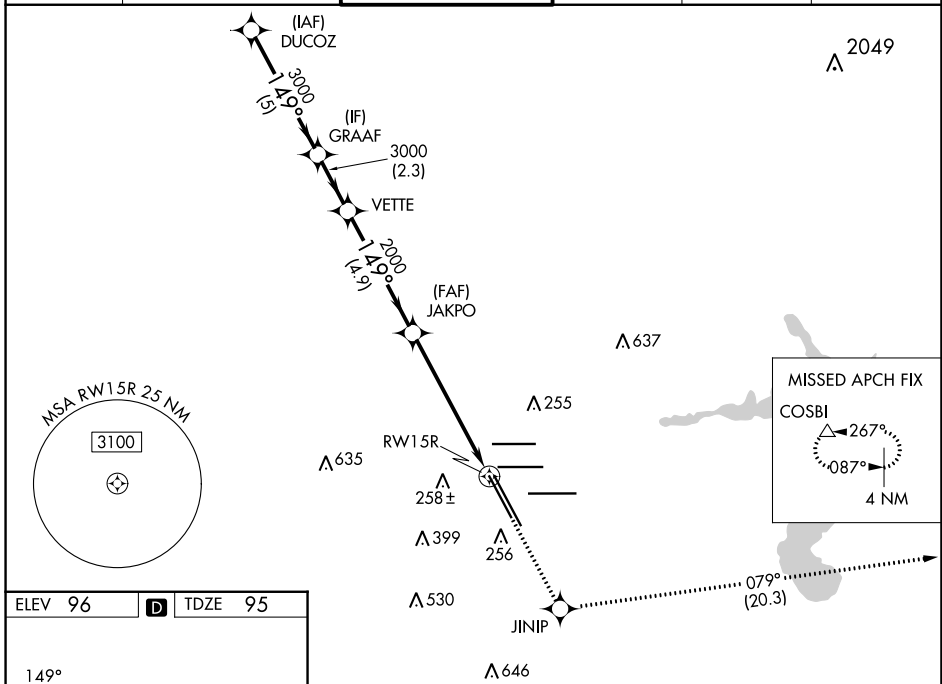
WAAS CH 97599	APP CRS 149°	Rwy Idg 10000 TDZE 95 Apt Elev 96
-------------------------	------------------------	--------------------------------------------------------------

RNAV (GPS) RWY 15R

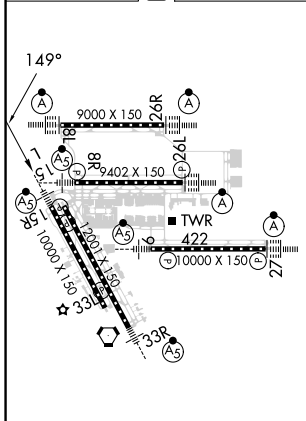
GEORGE BUSH INTCNL/HOUSTON (IAH)

RADAR required for procedure entry. RNP APCH.		MALSR 	MISSED APPROACH: Climb to 2000 direct JINIP and left turn on track 079° to COSBI and hold.
<p>⚠ For uncompensated Baro-VNAV systems, LNAV/VNAV NA below -3°C or above 54°C. For inop ALS, increase LPV Cat E visibility to RVR 4000, LNAV/VNAV all Cats visibility to RVR 5500, and LNAV Cat C/D/E visibility to 1 3/8 SM.</p>			

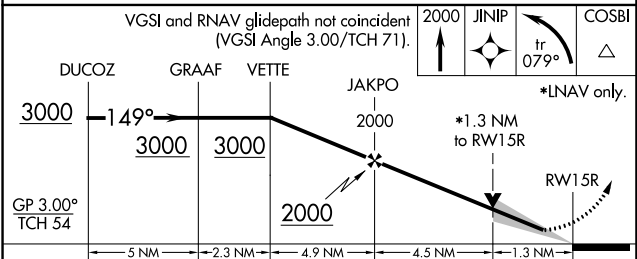
D-ATIS 124.05	HOUSTON APP CON 120.05 379.1 EAST 124.35 316.15 WEST	HOUSTON TOWER 127.3 288.25	GND CON 121.7	CLNC DEL 128.1	CPDLC
-------------------------	--------------------------------------------------------------------------	--------------------------------------	-------------------------	--------------------------	-------



ELEV 96	D	TDZE 95
---------	----------	---------



TDZ/CL Rwy 8R, 15R, 26R, 26L, 27 and 33L
HIRL all Rwy



CATEGORY	A	B	C	D	E
LPV DA	295/18		200 (200-1/2)		
LNAV/VNAV DA	460/35		365 (400-3/4)		
LNAV MDA	580/24	485 (500-1/2)	580/50		485 (500-1)

SC-5, 22 FEB 2024 to 21 MAR 2024

SC-5, 22 FEB 2024 to 21 MAR 2024