

APP CRS	Rwy ldg	11089
191°	TDZE	272
	Apt Elev	312

RNAV (RNP) Z RWY 19C

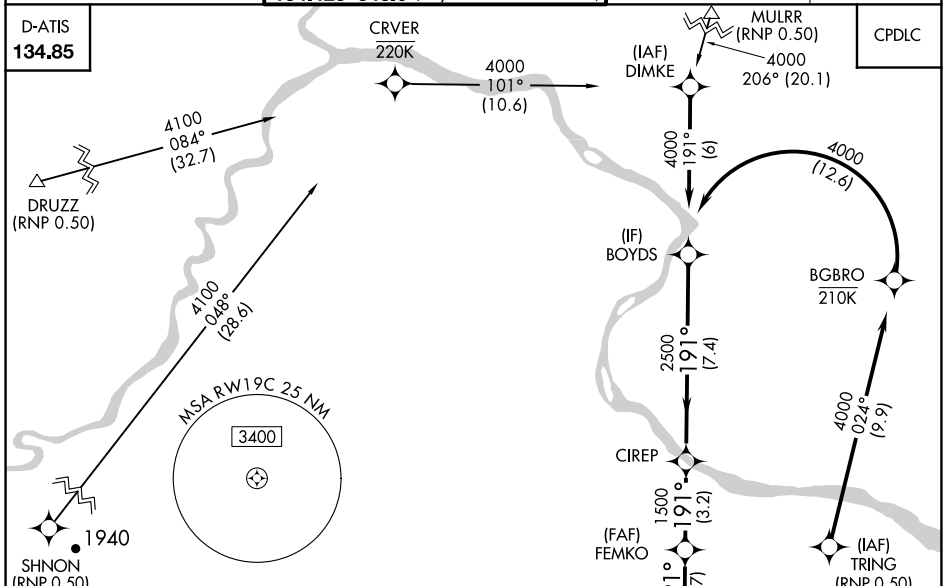
WASHINGTON DULLES INTL (IAD)

GPS required. For uncompensated Baro-VNAV systems, procedure NA below -14°C (6°F) or above 47°C (117°F). For inoperative ALSF, increase RNP 0.30 visibility to 1 3/4. Simultaneous approach authorized with ILS or LOC Rwy 19L, ILS Rwy 19L (Cat II). Use of FD or AP providing RNAV track guidance required during simultaneous operations.



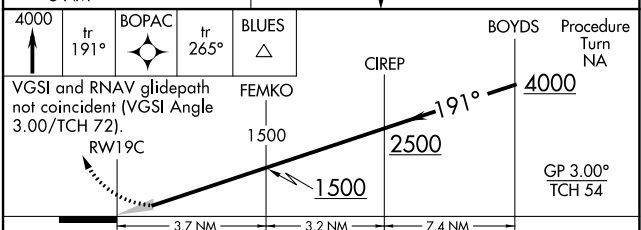
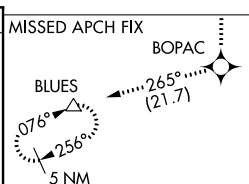
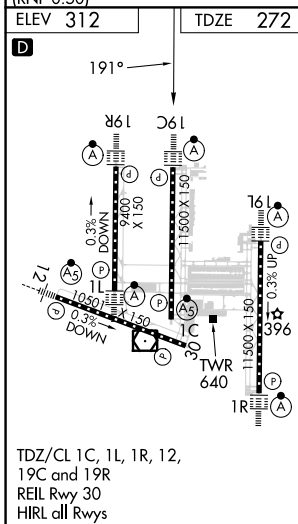
MISSED APPROACH: Climb to 4000 via track 191° to BOPAC and via track 265° to BLUES and hold.

POTOMAC APP CON	DULLES TOWER	GND CON	CLNC DEL
120.45 306.925 (241°-330°)	120.1 317.8 (Rwys 1R/19L)	121.9 317.8 (EAST)	135.7 317.8
128.525 306.925 (091°-240°)	120.25 348.6 (Rwy 1C/19C)	121.625 348.6 (WEST)	
126.1 338.25 (331°-090°)	134.425 348.6 (Rwys 1L/19R and 12/30)		



NE-3, 22 FEB 2024 to 21 MAR 2024

NE-3, 22 FEB 2024 to 21 MAR 2024



CATEGORY	A	B	C	D
RNP 0.30 DA	740/60 468 (500-1 1/4)			

TDZ/CL 1C, 1L, 1R, 12, 19C and 19R
REIL Rwy 30
HIRL all Rwys

AUTHORIZATION REQUIRED