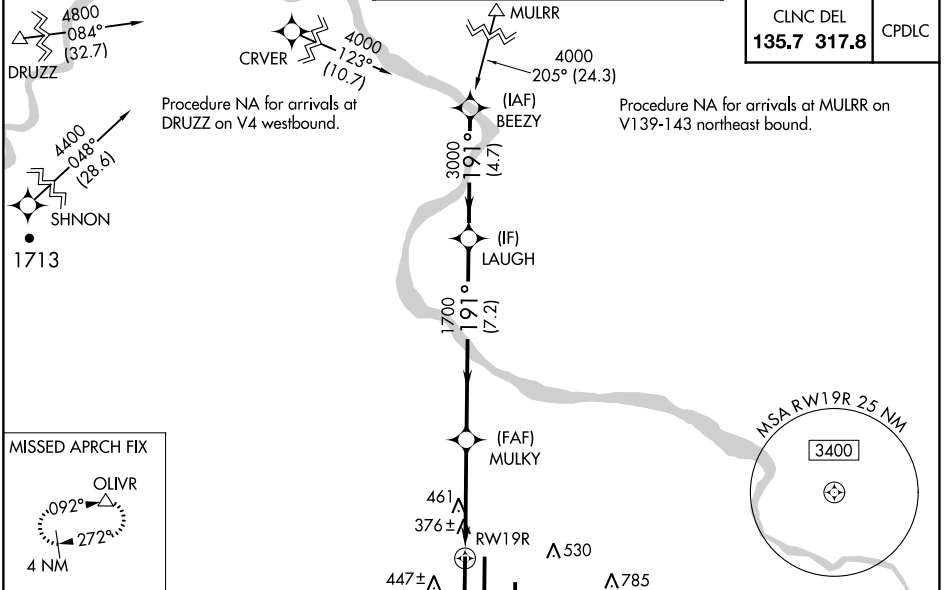


WAAS CH 86709 W19D	APP CRS 191°	Rwy Idg TDZE 278 Apt Elev 313	9400
--	------------------------	---	-------------

RNAV (GPS) RWY 19R

WASHINGTON DULLES INTL (IAD)

RNP APCH. ▼ For uncompensated Baro-VNAV systems, LNAV/VNAV NA below -15°C or above 48°C. Simultaneous approach authorized with ILS or LOC Rwy 19L, ILS Rwy 19L (Cat II). LNAV procedure NA during simultaneous operations. Use of FD or AP providing RNAV track guidance required during simultaneous operations.	ALSf-2 A	MISSED APPROACH: Climb to 5000 direct HIMRA and on 280° track to OLIVR and hold, continue climb-in-hold to 5000.
POTOMAC APP CON D-ATIS 134.85 120.45 306.925 (241°-330°) 128.525 306.925 (091°-240°) 126.1 338.25 (331°-090°)	DULLES TOWER 120.1 317.8 (Rwy 1R/19L) 120.25 348.6 (Rwy 1C/19C) 134.425 348.6 (Rwy 1L/19R and 12/30)	GND CON 121.9 317.8 (EAST) 121.625 348.6 (WEST)



Procedure	VGSi and RNAV glidepath not coincident (VGSi Angle 3.00/TCH 70).	5000	HIMRA	tr 280°	OLIVR
Turn	LAUGH				△
NA					
GP 3.00°					
TCH 55					
	7.2 NM	3.1 NM	1.2		

ELEV	313	D	TDZE	278
TDZ/CL Rwys 1C, 1L, 1R, 12, 19C and 19R				
REIL Rwy 30				
HIRL all Rwys				

NE-3, 22 FEB 2024 to 21 MAR 2024

NE-3, 22 FEB 2024 to 21 MAR 2024