

WICHITA, KANSAS

# TACAN RWY 1L

TACAN IAB Chan 112	APCH CRS 011°	Rwy Idg TDZE Arprt Elev	12,000 1347 1372
-----------------------	------------------	-------------------------------	------------------------

-(USAF)

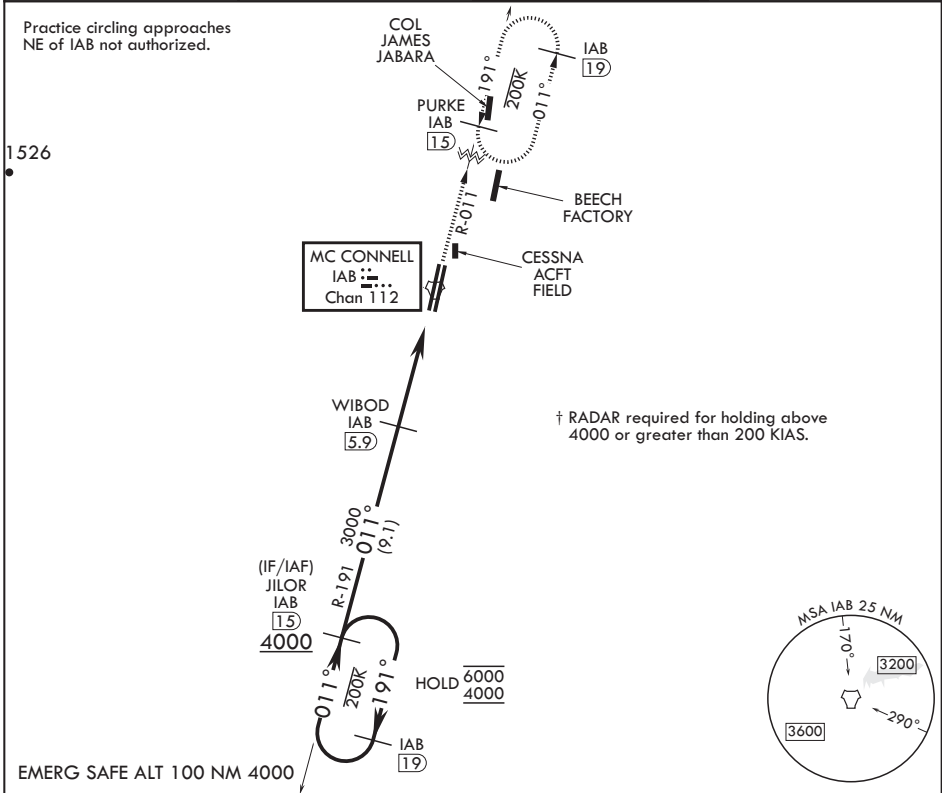
MC CONNELL AFB (KIAB)

▼ \*When ALS inop, increase CAT AB RVR to 55 and vis to 1 mile, CAT CDE vis to 1 1/4 miles.  
\*\* Circling not authorized W of Rwy 1L-19R.



MISSED APPROACH: Climb to 4000 via IAB TACAN R-011 to 15 DME (PURKE) and hold as published. Expect further clearance from ATC.

D-ATIS 124.65 269.9	WICHITA APP CON 134.8 269.1	TOWER 127.25 291.775	GND CON 118.0 275.8
------------------------	--------------------------------	-------------------------	------------------------

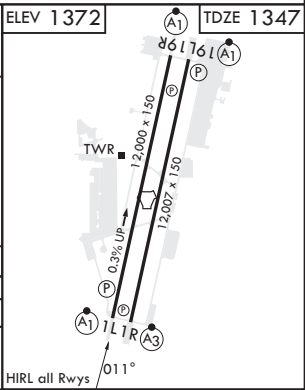


NC-2, 22 FEB 2024 to 21 MAR 2024

NC-2, 22 FEB 2024 to 21 MAR 2024

TACAN RWY 1L

	JILOR IAB 15		WIBOD IAB 5.9		TACAN	
	6000 ← 191°		3000		COGMU IAB 1.6	
	4000 → 011°		4.3 NM		0.7	
	3.03° ≥ TCH 55					
CATEGORY	A	B	C	D	E	
S-1L*	1780/24	433 (500-½)	1780/40	433	(500-¾)	
☐ CIRCLING**	1900-1	528 (600-1)	1940-1½ 568 (600-1½)	1940-2 568 (600-2)	2400-3 1028 (1100-3)	



WICHITA, KANSAS  
Amdt 6 28DEC23

37°37'N - 97°16'W

MC CONNELL AFB (KIAB)  
**TACAN RWY 1L**