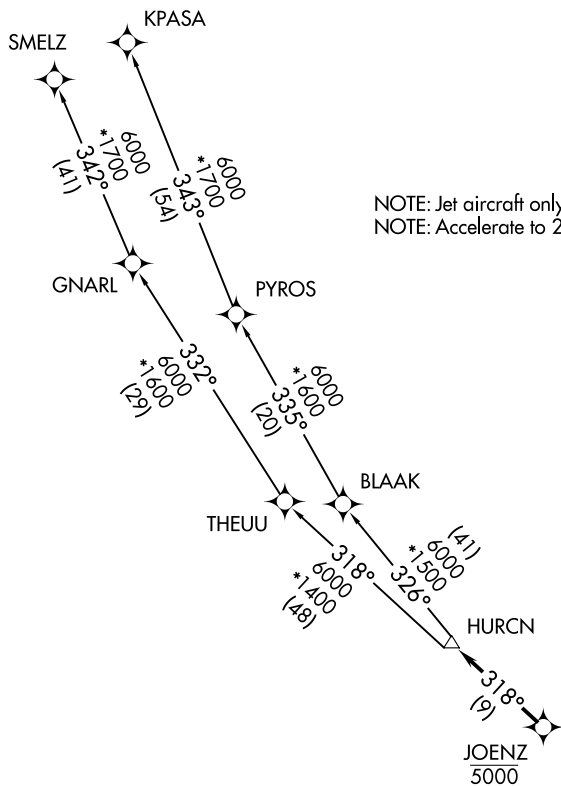


HOMESTEAD ARB (KHST)
HOMESTEAD, FLORIDA

HOMESTEAD, FLORIDA

**TOP ALTITUDE:
ASSIGNED BY ATC**

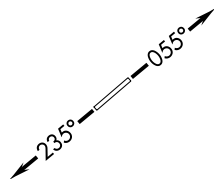
ATIS ★
 132.275 269.9
 CLNC DEL
 121.75 275.8
 GND CON
 121.75 275.8
 HOMESTEAD TOWER
 133.45 279.55
 MIAMI DEP CON
 125.5 354.1



NOTE: Jet aircraft only.
NOTE: Accelerate to 250K, if unable, advise ATC.

TAKEOFF MINIMUMS

Rwy 6: Standard with minimum climb of 500' per NM to 1800.
Rwy 24: Standard with minimum climb of 500' per NM to 2200.



NOTE: Chart not to scale.

(NARRATIVE ON FOLLOWING PAGE)

HOMESTEAD, FLORIDA
HOMESTEAD ARB (KHST)

(HURCN3.HURCN) 19MAY22



DEPARTURE ROUTE DESCRIPTION

TAKEOFF RUNWAY 6: Climb on heading 055° or as assigned for RADAR vectors to cross JOENZ at 5000, thence. . .

TAKEOFF RUNWAY 24: Climb on heading 235° or as assigned for RADAR vectors to cross JOENZ at 5000, thence. . .

. . .on track 318° to HURCN, then on transition. Maintain ATC assigned altitude, expect clearance to filed altitude within 10 minutes after departure.

KPASA TRANSITION (HURCN3.KPASA)

SMELZ TRANSITION (HURCN3.SMELZ)

SE-3, 22 FEB 2024 to 21 MAR 2024

SE-3, 22 FEB 2024 to 21 MAR 2024