

WAAS CH 48825 W28A	APP CRS 303°	Rwy Idg 10000 TDZE 6606 Apt Elev 6606
--	------------------------	--

RNAV (GPS) RWY 28

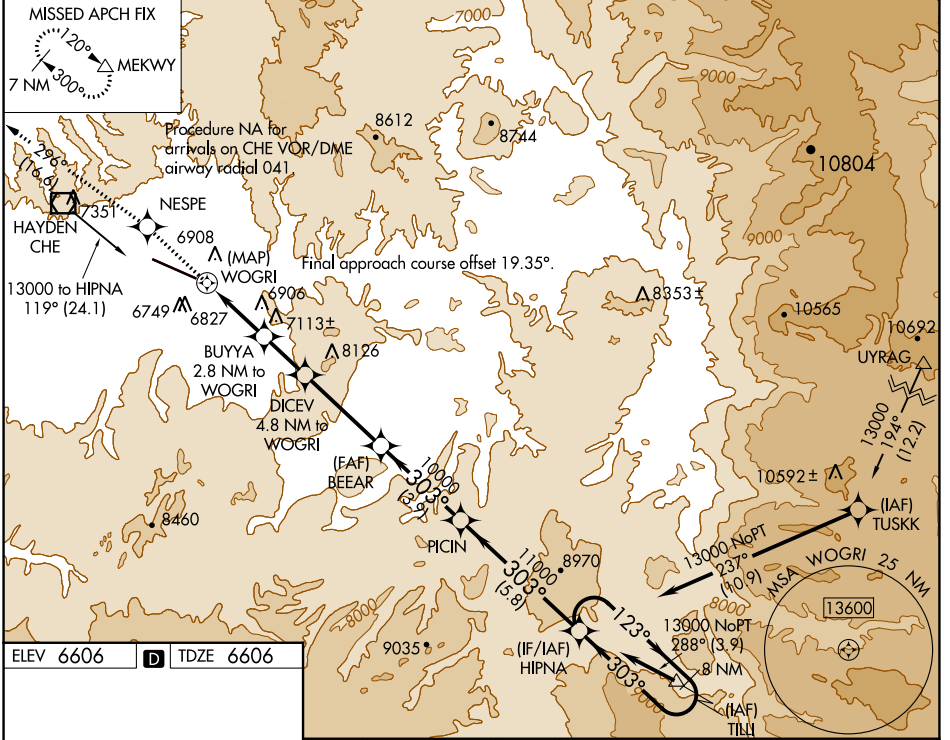
YAMPA VALLEY (HDN)

RNP APCH.

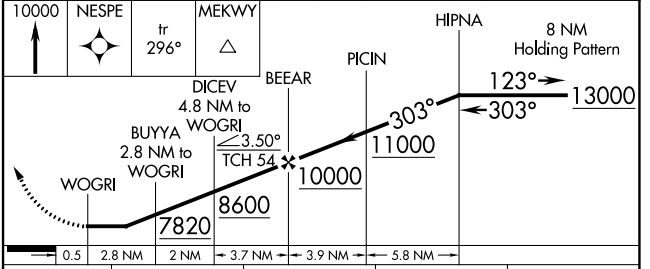
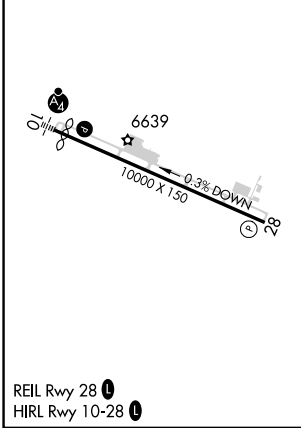
When local altimeter not received use Craig-Moffat altimeter setting and increase all MDA 100 feet, increase LP and LNAV Cat C/D visibility ¼ mile. Rwy 28 helicopter visibility reduction below ¾ SM NA.

MISSED APPROACH: Climb to 10000 direct NESPE and on track 296° to MEKWY and hold.

AWOS-3PT 119.275	DENVER CENTER 120.475 235.975	UNICOM 123.0 (CTAF) 0
----------------------------	---	---------------------------------



ELEV 6606	D	TDZE 6606
-----------	---	-----------



CATEGORY		A	B	C	D
LP	MDA	7000-1	394 (400-1)	7000-1½	394 (400-1½)
LNAV	MDA	7080-1	474 (500-1)	7080-1½	474 (500-1½)
CIRCLING		7220-1	614 (700-1)	7660-3	8180-3
				1054 (1100-3)	1574 (1600-3)

SW-1, 22 FEB 2024 to 21 MAR 2024

SW-1, 22 FEB 2024 to 21 MAR 2024