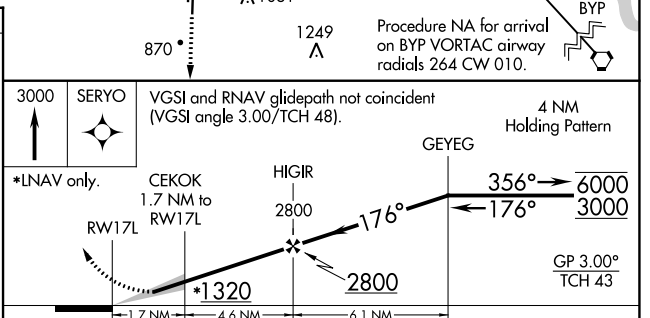
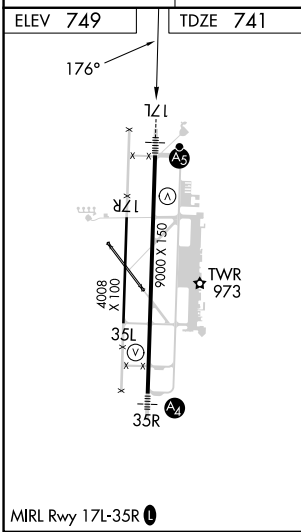
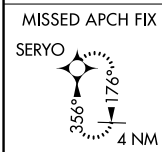
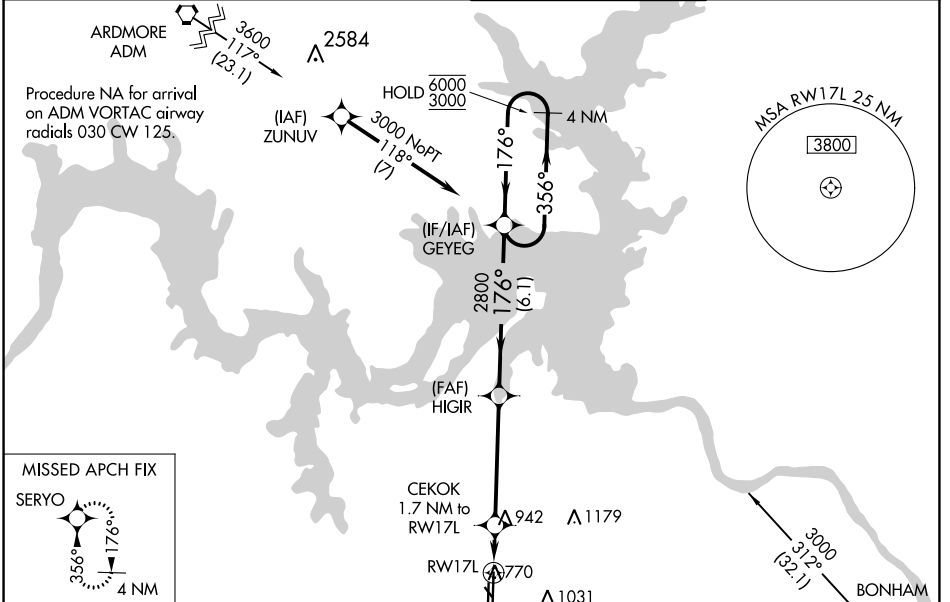


WAAS CH 86528 W17A	APP CRS 176°	Rwy Idg 9000
		TDZE 741
		Apt Elev 749

RNAV (GPS) RWY 17L

NORTH TEXAS RGNL/PERRIN FLD (GYI)

RNP APCH.		MALSRL	MISSED APPROACH: Climb to 3000 direct SERYO and hold.
<p>⚠ Circling Rwy 13, 17R, 31, 35L NA at night. For uncompensated Baro-VNAV systems, LNAV/VNAV NA below -16°C or above 54°C. For inop ALS, increase LNAV/VNAV all Cats visibility to 7/5 SM.</p>			
ATIS 118.775	FORT WORTH CENTER 124.75 323.0	NORTH TEXAS TOWER ★ 120.575 (CTAF) 233.7	GND CON 124.125



CATEGORY	A	B	C	D
LPV DA		941-1/2	200 (200-1/2)	
LNAV/VNAV DA		1015-1/2	274 (300-1/2)	
LNAV MDA	1200-1/2	459 (500-1/2)	1200-7/8	459 (500-7/8)
CIRCLING	1300-1	551 (600-1)	1400-3/4	1540-2 1/2
			651 (700-1 3/4)	791 (800-2 1/2)

SC-2, 22 FEB 2024 to 21 MAR 2024

SC-2, 22 FEB 2024 to 21 MAR 2024