

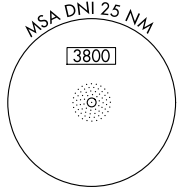
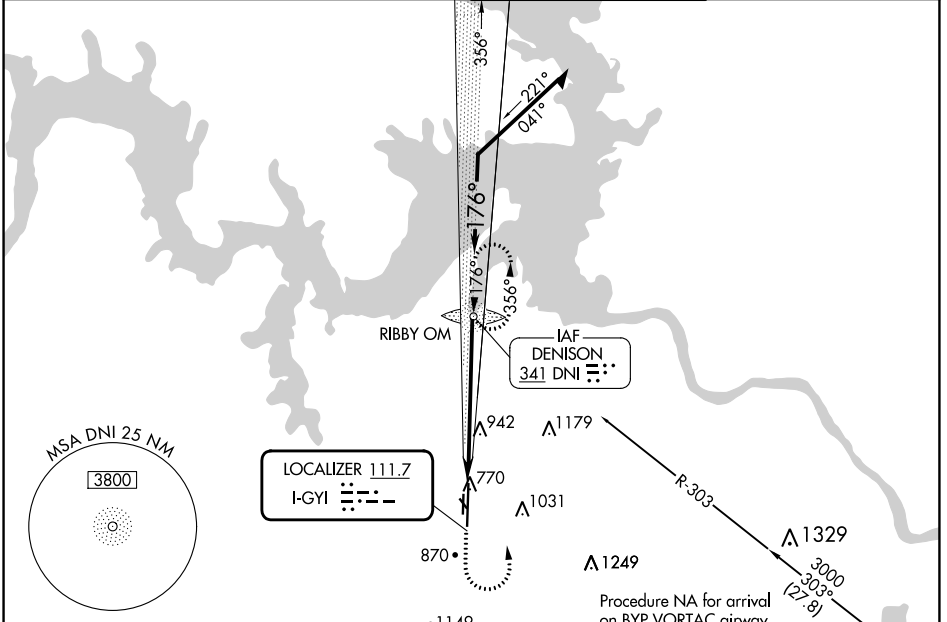
LOC I-GYI <b>111.7</b>	APP CRS <b>176°</b>	Rwy Idg <b>9000</b>
		TDZE <b>741</b>
		Apt Elev <b>749</b>

# ILS or LOC RWY 17L

NORTH TEXAS RGNL/PERRIN FLD (GYI)

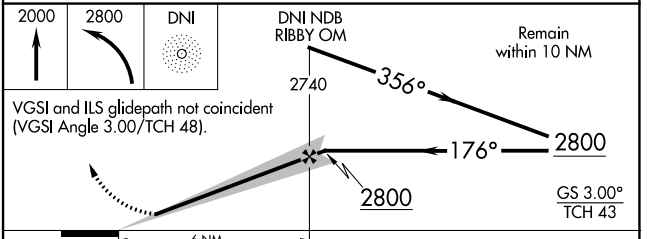
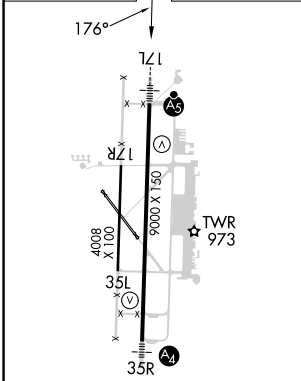
ADF required.	MALSR 	MISSED APPROACH: Climb to 2000 then climbing left turn to 2800 direct DNI NDB and hold.
Circling Rwy 13, 17R, 31, 35L NA at night. Autopilot coupled approach NA below 1900. For inop ALS, increase S-LOC-17L Cat C/D visibility to 1 3/8 SM.		

ATIS <b>118.775</b>	FORT WORTH CENTER <b>124.75 323.0</b>	NORTH TEXAS TOWER ★ <b>120.575 (CTAF) 233.7</b>	GND CON <b>124.125</b>
------------------------	--	--	---------------------------



LOCALIZER **111.7**  
I-GYI

ELEV <b>749</b>	TDZE <b>741</b>
-----------------	-----------------



MIRL Rwy 17L-35R	FAF to MAP 6 NM						
	Knots	60	90	120	150	180	
	Min:Sec	6:00	4:00	3:00	2:24	2:00	
<input checked="" type="checkbox"/> CIRCLING		1300-1	551 (600-1)	1400-1 3/4	651 (700-1 3/4)	1540-2 1/2	791 (800-2 1/2)

SC-2, 22 FEB 2024 to 21 MAR 2024

SC-2, 22 FEB 2024 to 21 MAR 2024