

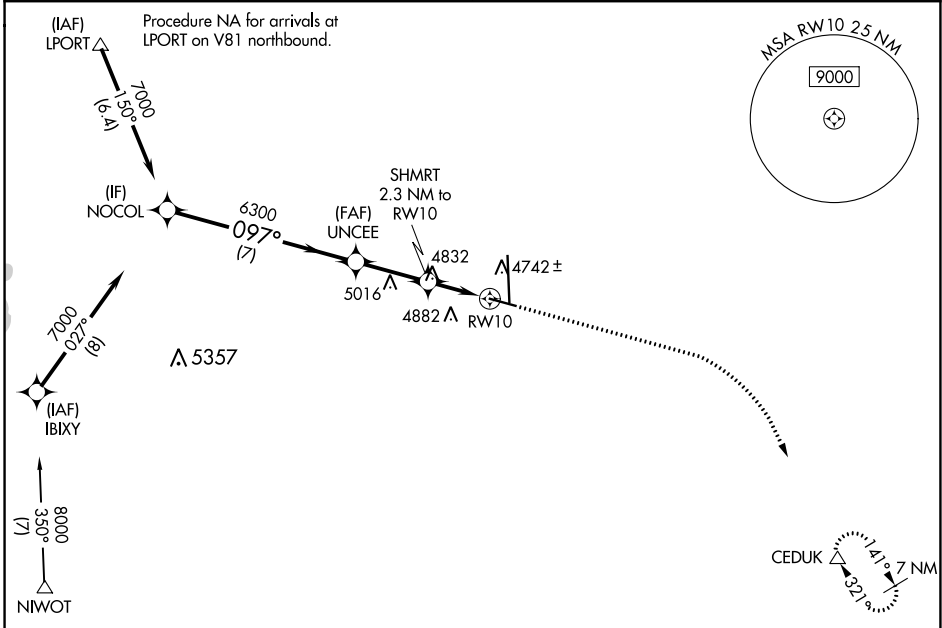
WAAS CH 62900 W10A	APP CRS 097°	Rwy Idg TDZE Apt Elev	5801 4661 4697
--	------------------------	-----------------------------	---

RNAV (GPS) RWY 10

GREELEY-WELD COUNTY (GXY)

RNP APCH.	MISSED APPROACH: Climb to 5400 then climbing right turn to 7000 direct CEDUK and hold.
<p>▼ For uncompensated Baro-VNAV systems, LNAV/VNAV NA below -24°C or above 54°C.</p> <p>▲</p>	

AWOS-3PT 135.175	DENVER APP CON 134.85 251.125	CLNC DEL 126.65	UNICOM 122.8 (CTAF) 0
----------------------------	---	---------------------------	---------------------------------



SW-1, 22 FEB 2024 to 21 MAR 2024

SW-1, 22 FEB 2024 to 21 MAR 2024

ELEV 4697		TDZE 4661	
VGSi and RNAV glidepath not coincident NOCOL (VGSi Angle 3.00/TCH 43).			
7000 GP 3.00° TCH 50		UNCEE SHMRT 2.3 NM to RW10 *1.4 NM to RW10 *5440	
7000 097°		5400 7000 CEDUK *LNAV only	
6300 097°		0.9 NM 1.4 NM	
CATEGORY	A	B	C
LPV DA		4911-3/4	250 (300-3/4)
LNAV/VNAV DA		4920-3/4	259 (300-3/4)
LNAV MDA	5140-1	479 (500-1)	5140-1 3/8 479 (500-1 3/8)
CIRCLING	5140-1 443 (500-1)	5200-1 503 (600-1)	5200-1 1/2 503 (600-1 1/2) 5380-2 1/4 683 (700-2 1/4)

