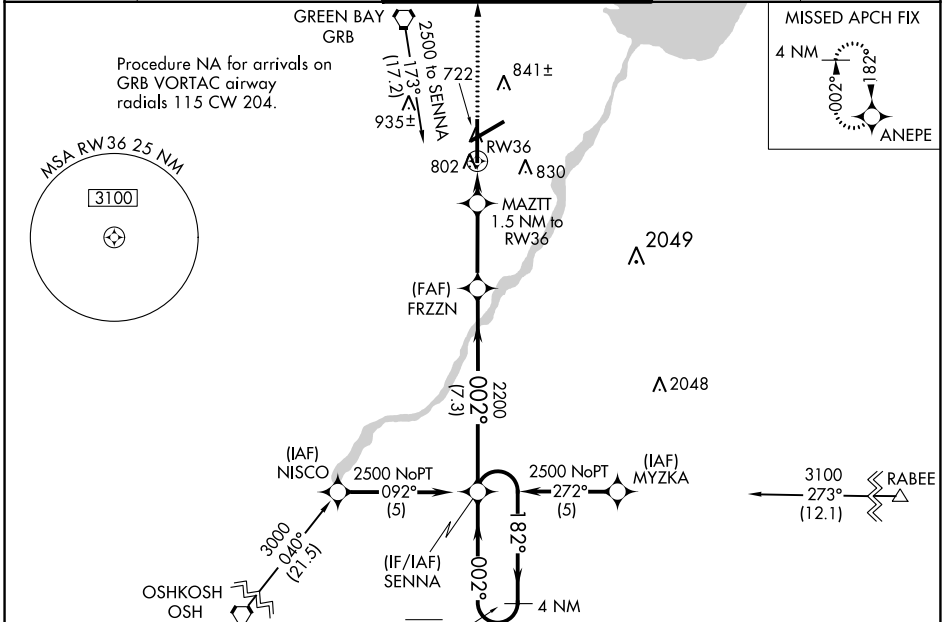


WAAS CH 42902 W36A	APP CRS 002°	Rwy Idg 8201
		TDZE 684
		Apt Elev 695

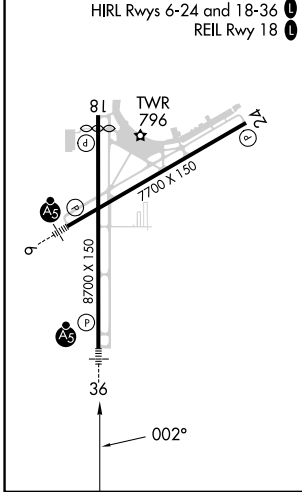
RNAV (GPS) RWY 36

GREEN BAY/AUSTIN STRAUBEL INTL (GRB)

RNP APCH.		MALSR		MISSED APPROACH: Climb to 2500 direct ANEPE and hold.	
ASR For uncompensated Baro-VNAV systems, LNAV/VNAV NA below -16°C or above 54°C. For inop ALS, increase LNAV/VNAV all Cats visibility to RVR 6000 and LNAV Cats C/D visibility to RVR 5500. ** RVR 1800 authorized with use of FD or AP or HUD to DA.		ATIS 124.1		GREEN BAY APP CON* 119.4 338.2	
		GREEN BAY TOWER* 118.7 (CTAF) 0 257.8		GND CON 121.9	
				CLNC DEL 121.75	



ELEV 695	D	TDZE 684
----------	---	----------



2500	ANEPE	4 NM Holding Pattern	
*LNAV only	MAZTT 1.5 NM to RW36	FRZZN 2200	SENNA 182° / 002°
	RW36	1200*	2200
	1.5 NM	3.1 NM	7.3 NM
CATEGORY	A	B	C
LPV DA	884/24		200 (200-½)
LNAV/VNAV DA	1097/40		413 (500-¾)
LNAV MDA	1060/24	376 (400-½)	1060/35 376 (400-¾)
CIRCLING	1200-1	505 (600-1)	1300-2 605 (700-2)

EC-3, 22 FEB 2024 to 21 MAR 2024

EC-3, 22 FEB 2024 to 21 MAR 2024