

WAAS CH 53504 W31A	APP CRS 311°	Rwy Idg TDZE Apt Elev	9200 354 365
---------------------------------	------------------------	-----------------------------	---

RNAV (GPS) RWY 31

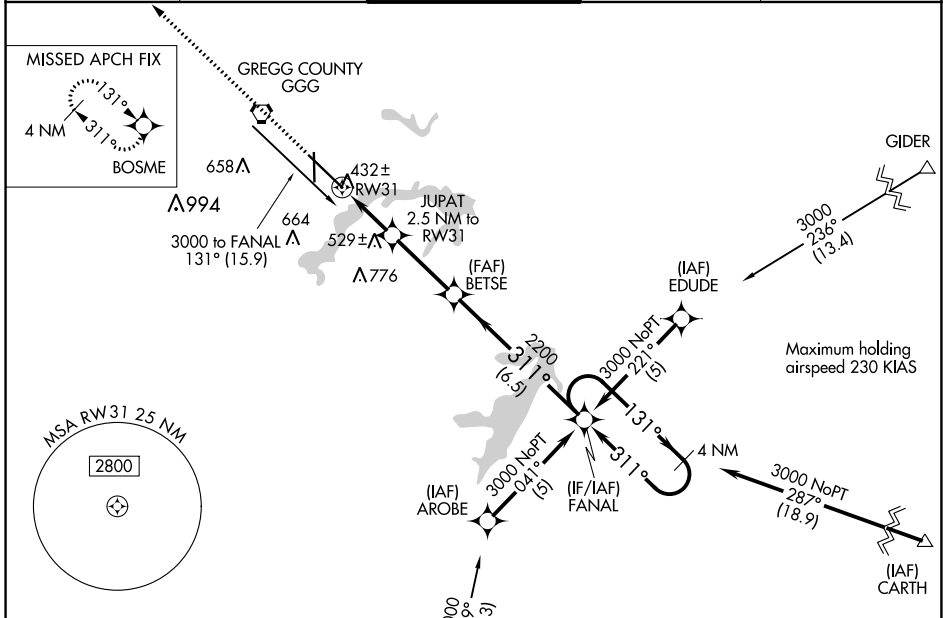
EAST TEXAS RGNL (GGG)

RNP APCH - GPS

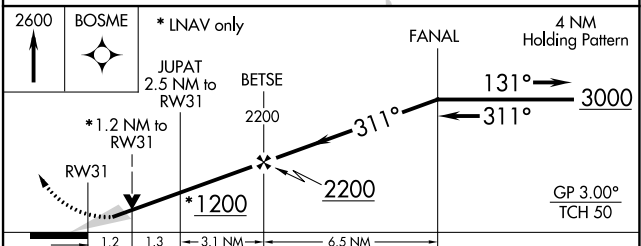
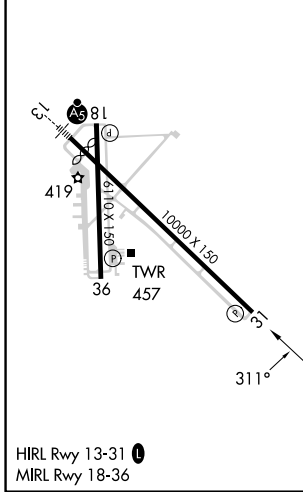
Baro-VNAV NA when using Gilmer altimeter setting. For uncompensated Baro-VNAV systems, LNAV/VNAV NA below -15°C or above 48°C. VDP NA when using Gilmer altimeter setting. When local altimeter setting not received, use Gilmer altimeter setting and increase all DA 59 feet, all MDA 60 feet. Increase all LPV and LNAV/VNAV visibilities 1/8 SM and Circling Cats C/D/E visibilities 1/4 SM.

MISSED APPROACH:
Climb to 2600 direct BOSME and hold.

ATIS 119.65	LONGVIEW APP CON* 124.675 257.975	EASTEX TOWER* 119.2 (CTAF) 0377.05	GND CON 121.6	UNICOM 122.95
-----------------------	---	--	-------------------------	-------------------------



ELEV 365	D	TDZE 354
----------	----------	----------



CATEGORY	A	B	C	D	E
LPV DA	604-3/4 250 (300-3/4)				
LNAV/VNAV DA	682-1/4 328 (400-1/4)				
LNAV MDA	800-1	446 (500-1)	800-1/4 446 (500-1/4)	800-1/2	446 (500-1/2)
CIRCLING	860-1	495 (500-1)	980-1/4 614 (700-1/4)	1080-2/4 714 (800-2/4)	1080-2/2 715 (800-2/2)

SC-2, 22 FEB 2024 to 21 MAR 2024

SC-2, 22 FEB 2024 to 21 MAR 2024