

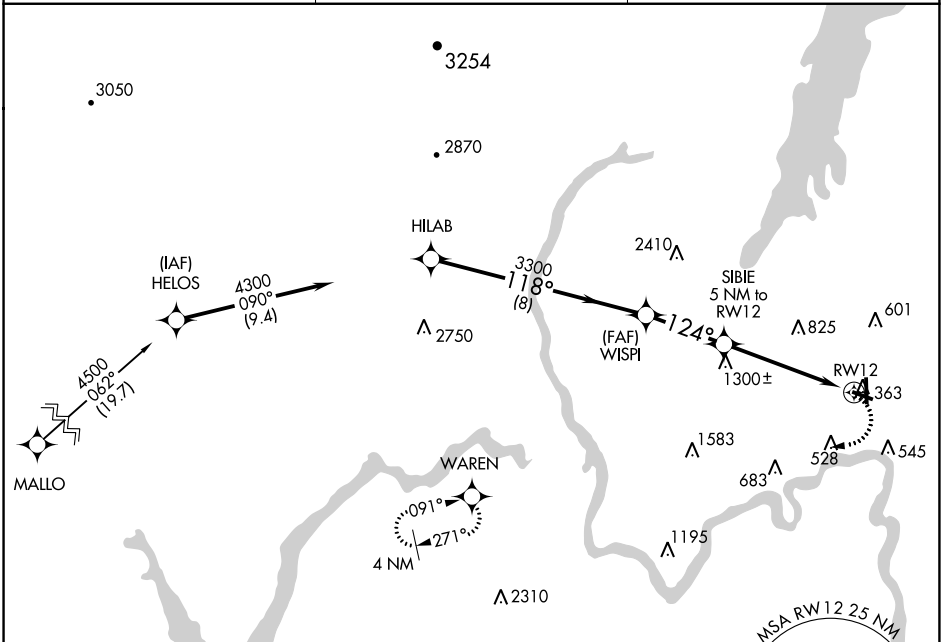
APP CRS	Rwy Idg	<b>3999</b>
<b>124°</b>	TDZE	<b>328</b>
	Apt Elev	<b>328</b>

# RNAV (GPS) RWY 12

FLOYD BENNETT MEML (GFL)

NA -19°C	DME/DME RNP-0.3 NA. Helicopter visibility reduction below 1 SM NA. Night landing: Rwy 12, 30 NA.	MISSED APPROACH: Climbing right turn to 4000 direct to WARREN WP and hold.
-------------	--	--

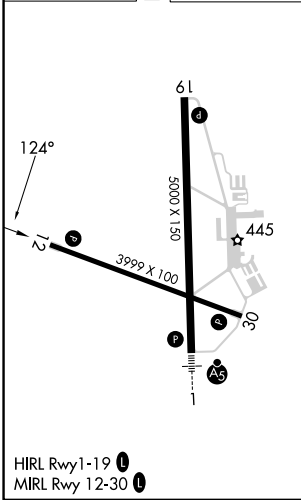
ASOS <b>119.925</b>	ALBANY APP CON <b>132.825 307.2</b>	UNICOM <b>123.0 (CTAF) 0</b>
------------------------	--	---------------------------------



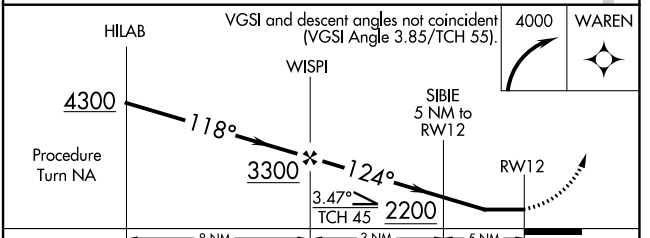
NE-2, 22 FEB 2024 to 21 MAR 2024

NE-2, 22 FEB 2024 to 21 MAR 2024

ELEV 328	<b>D</b>	TDZE 328
----------	----------	----------



HIRL Rwy 1-19 **0**  
 MIRL Rwy 12-30 **0**



CATEGORY	A	B	C	D
LNAV MDA	1560-1¼ 1232 (1300-1¼)	1560-1½ 1232 (1300-1½)	1560-3	1232 (1300-3)
CIRCLING	1560-1¼ 1232 (1300-1¼)	1560-1½ 1232 (1300-1½)	1560-3	1232 (1300-3)