

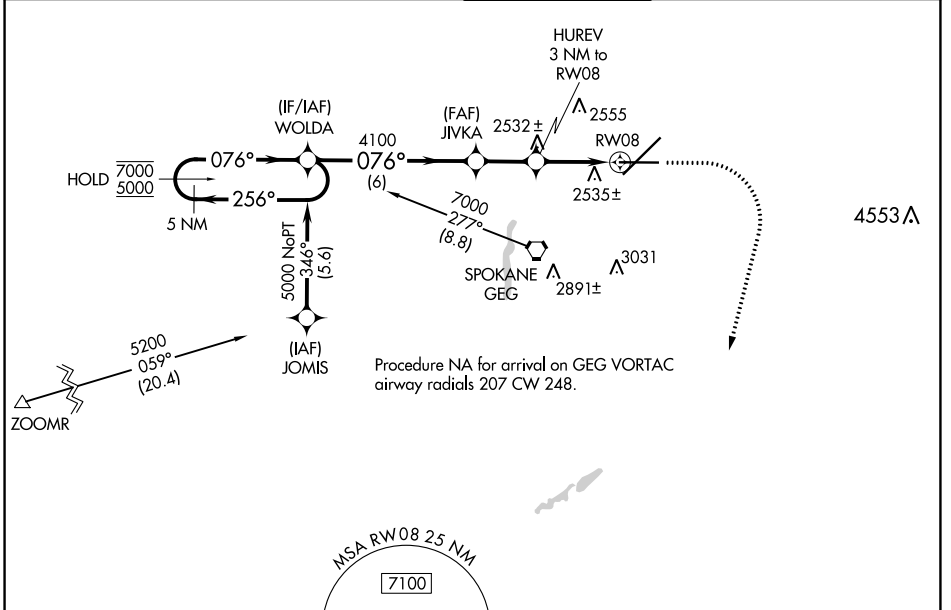
WAAS CH 48801 W08A	APP CRS 076°	Rwy Idg TDZE Apt Elev	8199 2376 2385
--	------------------------	-----------------------------	---

RNAV (GPS) Y RWY 8

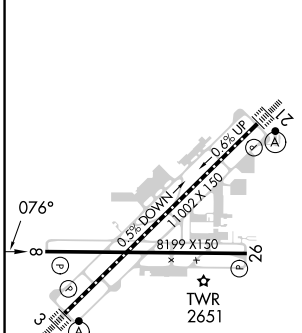
SPOKANE INTL (GEG)

RNP APCH.	MISSED APPROACH: Climb to 2900, then climbing right turn to 6000 direct ATOXE and hold.
▼ For uncompensated Baro-VNAV systems, LNAV/VNAV NA below -18°C or above 52°C.	

ATIS 124.325 254.375	SPOKANE APP CON 123.75 282.25 (205°-025°) 133.35 263.0 (026°-204°)	SPOKANE TOWER 118.3 278.3	GND CON 121.9 348.6	CLNC DEL 127.55
--------------------------------	--	-------------------------------------	-------------------------------	---------------------------



ELEV 2385	D	TDZE 2376
-----------	----------	-----------



TDZ/CL Rwy 3 and 21	REIL Rwy 8 and 26	HIRL Rwy 3-21	MIRL Rwy 8-26
---------------------	-------------------	---------------	---------------

5 NM Holding Pattern		WOLDA	JIVKA	HUREV 3 NM to RW08	2900	6000	ATOXE
7000	5000	4100	4100	3400			
GP 3.00°		6 NM		2.1 NM	1.8 NM	1.2	
CATEGORY	A	B	C	D			
LPV DA		2576-¾	200 (200-¾)				
LNAV/VNAV DA		2834-1½	458 (500-1½)				
LNAV MDA	2800-1	424 (500-1)	2800-1¼	424 (500-1¼)			

NW-1, 22 FEB 2024 to 21 MAR 2024

NW-1, 22 FEB 2024 to 21 MAR 2024