

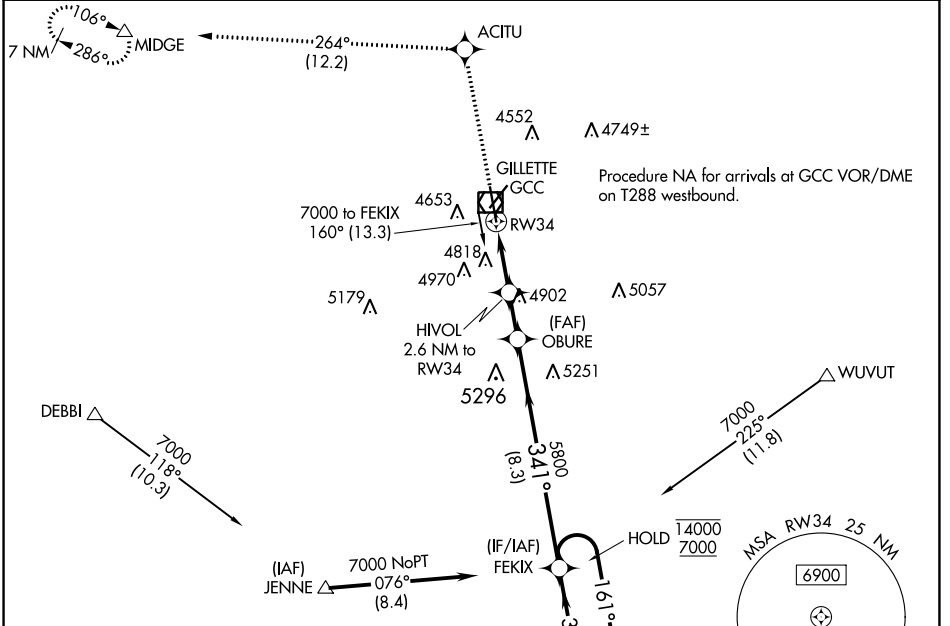
WAAS CH 86204 W34A	APP CRS 341°	Rwy Idg 7500 TDZE 4365 Apt Elev 4365
-------------------------------------	---------------------	---

RNAV (GPS) RWY 34

NORTHEAST WYOMING RGNL (GCC)

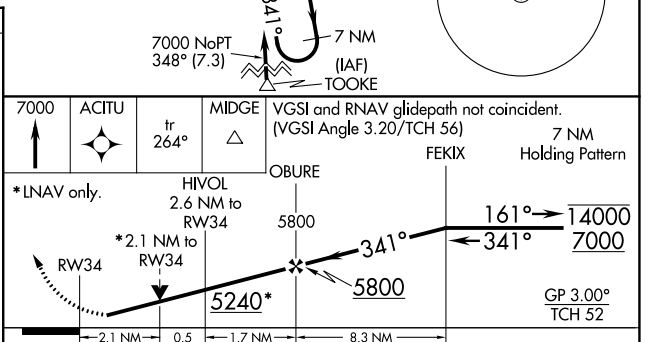
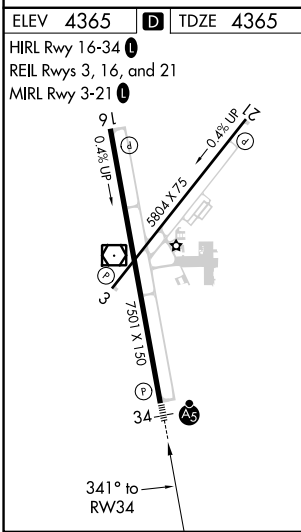
RNP APCH.	MALS R	MISSED APPROACH: Climb to 7000 direct ACITU and on track 264° to MIDGE and hold.
<p>⚠ Circling Rwy 3 NA at night. Inop table does not apply to LPV and LNAV/VNAV. For uncompensated Baro-VNAV systems, LNAV/VNAV NA below -23°C or above 54°C. For inop ALS, increase LNAV Cat A visibility to 1 SM, and Cat C/D to 2 SM. Rwy 34 helicopter visibility reduction below 3/4 SM NA.</p>		

ASOS 124.175	DENVER CENTER 135.6 363.025	UNICOM 122.95	CTAF 118.5
---------------------	------------------------------------	----------------------	-------------------



NW-1, 22 FEB 2024 to 21 MAR 2024

NW-1, 22 FEB 2024 to 21 MAR 2024



CATEGORY	A	B	C	D
LPV DA		4620-3/4	255 (300-3/4)	
LNAV/VNAV DA		5480-4	1115 (1200-4)	
LNAV MDA	5120-3/4	755 (800-3/4)	5120-13/4	755 (800-13/4)
<input checked="" type="checkbox"/> CIRCLING	5120-1 755 (800-1)	5240-11/4 875 (900-11/4)	5400-3	1035 (1100-3)