

WAAS CH 61017 W02A	APP CRS 015°	Rwy Idg 5500 TDZE 978 Apt Elev 984
--	------------------------	---

RNAV (GPS) RWY 2

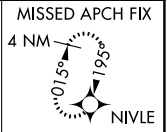
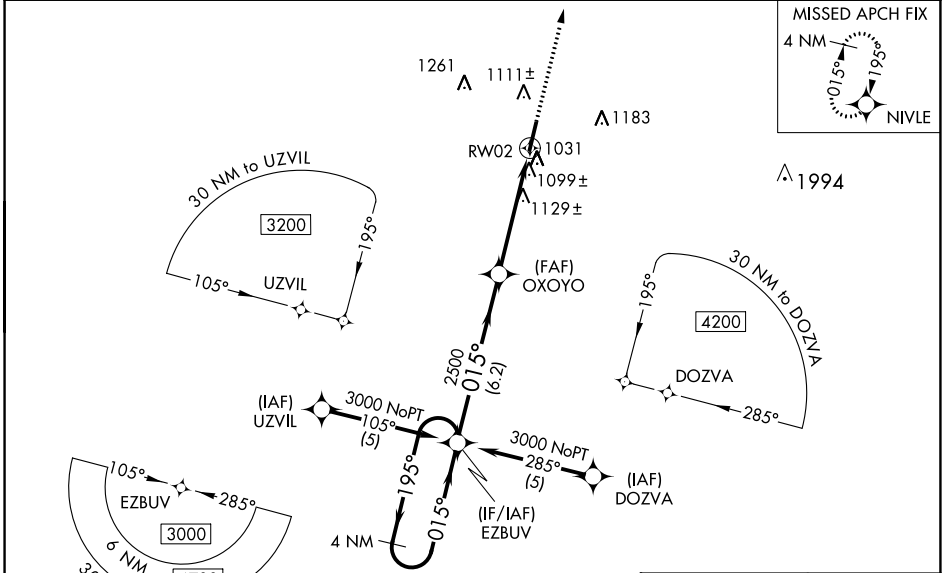
FAYETTEVILLE MUNI (FYM)

RNP APCH - GPS

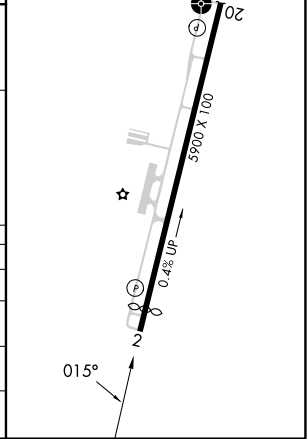
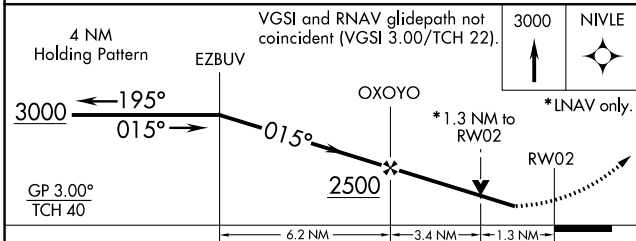
Baro-VNAV and VDP NA when using Huntsville Exec Tom Sharp Jr fld altimeter setting. For uncompensated Baro-VNAV systems, LNAV/VNAV NA below -16°C (4°F) or above 46°C (114°F). Rwy 2 helicopter visibility reduction below 3/4 SM NA. When local altimeter setting not received use Huntsville Exec Tom Sharp Jr fld altimeter setting and increase LPV DA to 1341 feet and all visibilities 1/4 SM; LNAV/VNAV DA to 1519 feet and all visibilities 1/2 SM; increase all MDAs 120 feet and LNAV Cat C and Circling Cat D visibility 1/4 SM, LNAV Cat D and Circling Cat C visibility 1/2 SM.

MISSED APPROACH: Climb to 3000 direct NIVLE and hold.

AWOS-3 135.275	HUNTSVILLE APP CON * 125.6 354.1	CLNC DEL (GCO) 121.725	UNICOM 122.8 (CTAF) 0
--------------------------	--	----------------------------------	---------------------------------



ELEV 984	TDZE 978
MIRL Rwy 2-20	REIL Rwys 2 and 20



CATEGORY	A	B	C	D
LPV DA		1228-1	250 (300-1)	
LNAV/VNAV DA		1406-1½	428 (500-1½)	
LNAV MDA	1380-1	402 (400-1)	1380-1¼	402 (400-1¼)
CIRCLING	1420-1 436 (500-1)	1540-1 556 (600-1)	1580-1½ 596 (600-1½)	1580-2 596 (600-2)

SE-1, 22 FEB 2024 to 21 MAR 2024

SE-1, 22 FEB 2024 to 21 MAR 2024