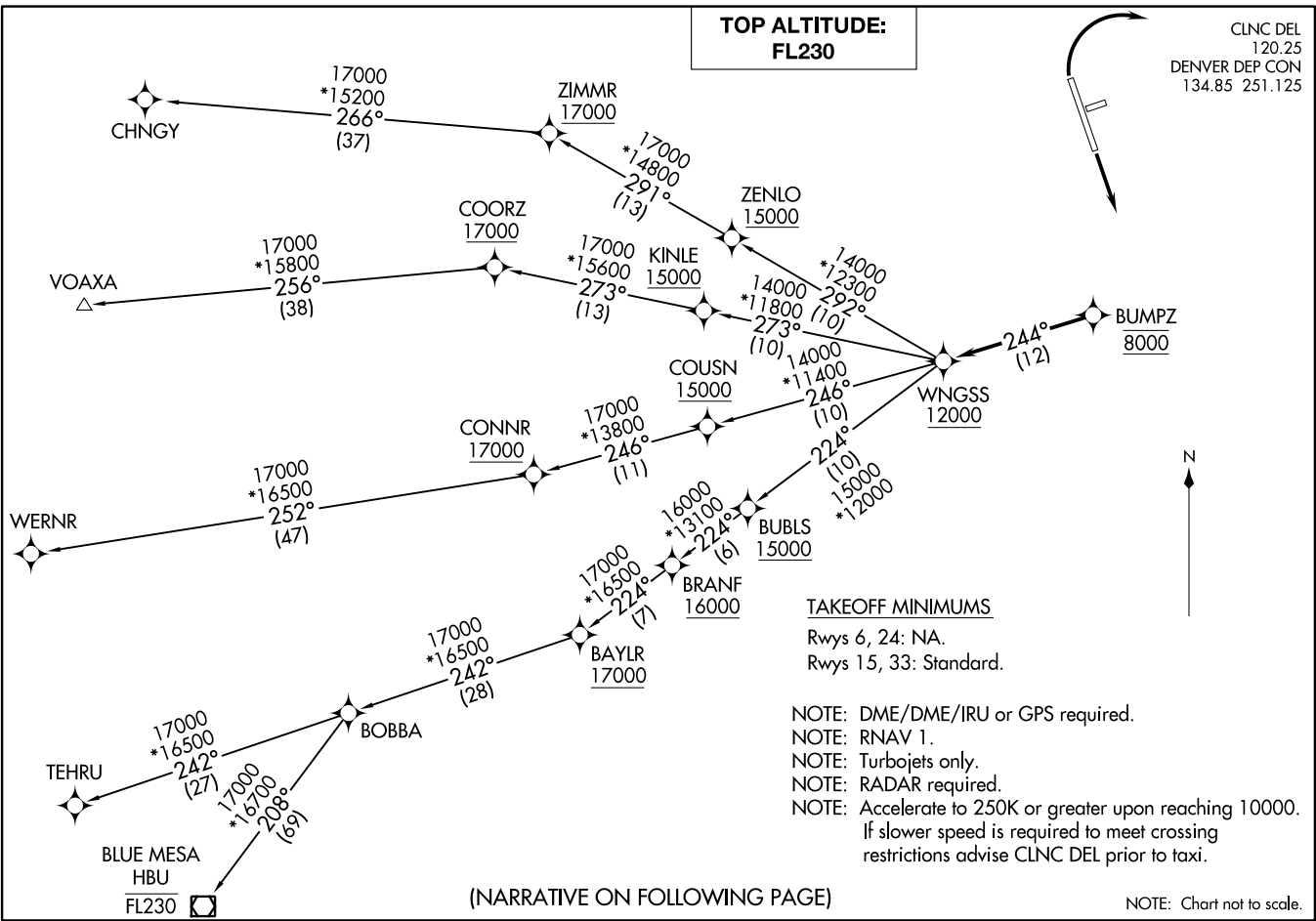


WNGSS ONE DEPARTURE (RNAV)  
(WNGSS1, WNGSS) 26MAR20

FORT COLLINS/LOVELAND, COLORADO  
NORTHERN COLORADO RGNL (FNTL)



(WNGSS1, WNGSS) 20086  
WNGSS ONE DEPARTURE (RNAV)  
A1-5677 (FAA)

NORTHERN COLORADO RGNL (FNTL)  
FORT COLLINS/LOVELAND, COLORADO



DEPARTURE ROUTE DESCRIPTION

TAKEOFF RUNWAY 15: Climb on a heading between 350° CW 180° as assigned by ATC. Thence. . . .

TAKEOFF RUNWAY 33: Climbing right turn on a heading between 350° CW 150° as assigned by ATC. Thence. . . .

. . . .expect RADAR vectors to cross BUMPZ at 8000 then on track 244° to cross WNGSS at or above 12000 then on (transition) maintain FL230 or filed lower altitude. Expect higher filed altitude ten minutes after departure.

BLUE MESA TRANSITION (WNGSS1.HBU)

CHNGY TRANSITION (WNGSS1.CHNGY)

TEHRU TRANSITION (WNGSS1.TEHRU)

VOAXA TRANSITION (WNGSS1.VOAXA)

WERNR TRANSITION (WNGSS1.WERNR)

SW-1, 22 FEB 2024 to 21 MAR 2024

SW-1, 22 FEB 2024 to 21 MAR 2024