

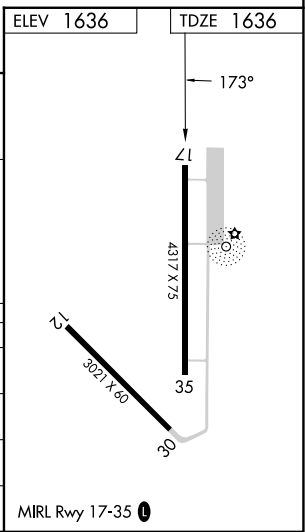
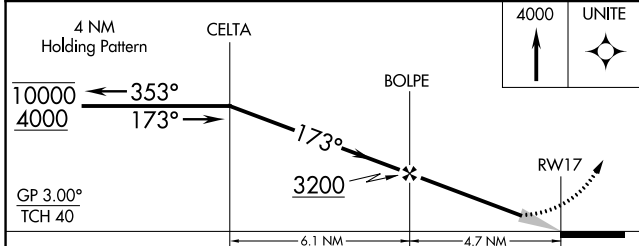
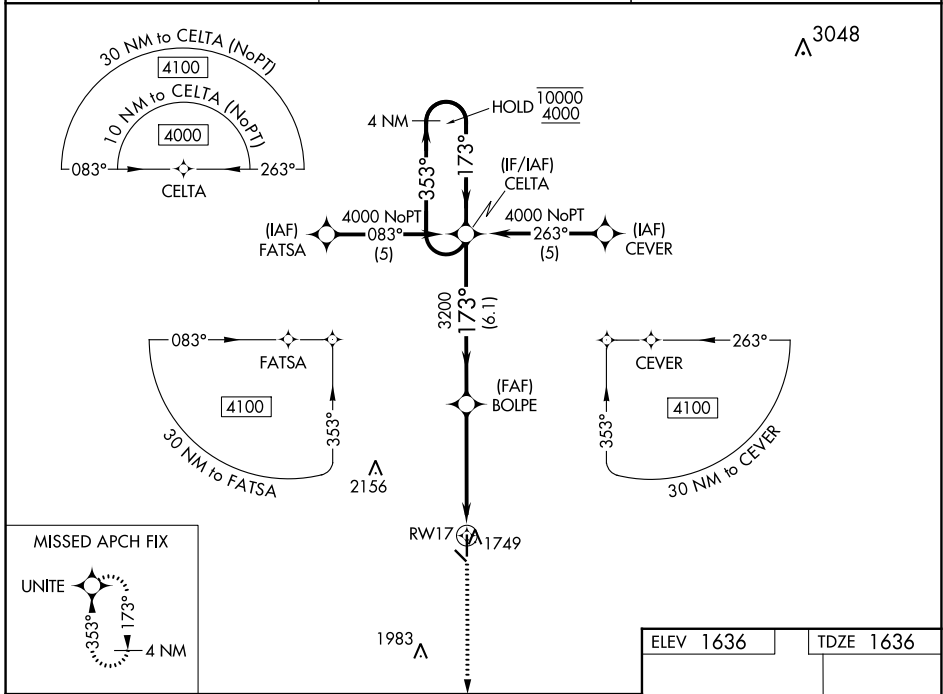
WAAS CH <b>69414</b> <b>W17A</b>	APP CRS <b>173°</b>	Rwy ldg <b>4317</b> TDZE <b>1636</b> Apt Elev <b>1636</b>
--	------------------------	---

# RNAV (GPS) RWY 17

FAIRMONT STATE (F<sup>M</sup>MZ)

RNP APCH.	MISSED APPROACH: Climb to 4000 direct UNITE and hold.
<p>⚠️ Circling to Rwy 12, 30 NA at night. Baro-VNAV NA. Use York altimeter setting, when not received use Hebron altimeter setting and increase all DA 31 feet and all MDA 40 feet.</p>	

JYR AWOS-3 <b>124.175</b>	MINNEAPOLIS CENTER <b>119.4 278.8</b>	CTAF <b>122.9</b>
------------------------------	--	----------------------



CATEGORY	A	B	C	D
LPV DA	1934-1	298 (300-1)		NA
LNAV/VNAV DA	2043-1½	407 (500-1½)		NA
LNAV MDA	2240-1	604 (700-1)		NA
CIRCLING	2240-1	604 (700-1)		NA

NC-2, 22 FEB 2024 to 21 MAR 2024

NC-2, 22 FEB 2024 to 21 MAR 2024