

(DORRL1.DORRL) 22139  
DORRL ONE DEPARTURE (RNAV)

AL-744 (FAA)  
FORT LAUDERDALE/HOLLYWOOD INTL (FLL)  
FORT LAUDERDALE, FLORIDA

D-ATIS  
135.0  
CLNC DEL  
128.4  
CPDLC  
GND CON  
121.4  
FORT LAUDERDALE TOWER  
119.3 257.8  
MIAMI DEP CON  
126.05 251.1

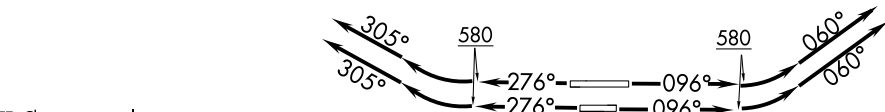
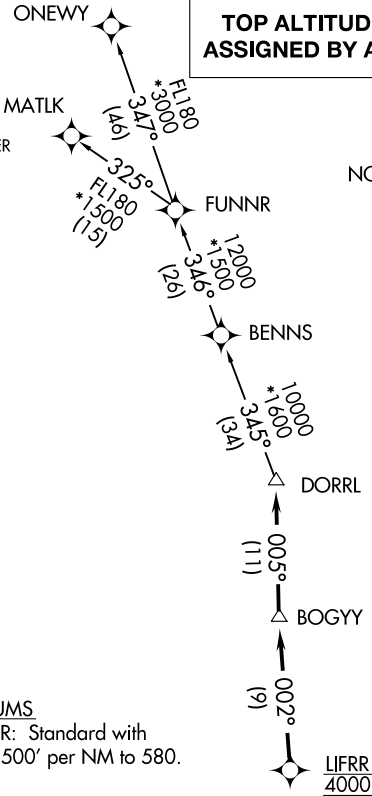
TOP ALTITUDE:  
ASSIGNED BY ATC

RNAV 1 - DME/DME/IRU or GPS.  
RADAR required.

NOTE: For turbo-props/props filed at or above 13000.

TAKEOFF MINIMUMS

Rwys 10L/R, 28L/R: Standard with minimum climb of 500' per NM to 580.



NOTE: Chart not to scale.

DEPARTURE ROUTE DESCRIPTION  
SEE ADDITIONAL REQUIREMENTS ON AAUP

**TAKEOFF RUNWAYS 10L/R:** Climb on heading 096° to 580, then climbing left turn heading 060° or as assigned by ATC for vectors to cross LIFRR at 4000, thence. . . .  
**TAKEOFF RUNWAYS 28L/R:** Climb on heading 276° to 580, then climbing right turn heading 305° or as assigned by ATC for vectors to cross LIFRR at 4000, thence. . . .

. . . on track 002° to BOGY, then on track 005° to DORRL then on (transition), maintain altitude as assigned by ATC, expect filed altitude 10 minutes after departure.

MATLK TRANSITION (DORRL1.MATLK)  
ONEWY TRANSITION (DORRL1.ONEWY)

DORRL ONE DEPARTURE (RNAV)  
(DORRL1.DORRL) 19MAY22

FORT LAUDERDALE, FLORIDA  
FORT LAUDERDALE/HOLLYWOOD INTL (FLL)

SE-3, 22 FEB 2024 to 21 MAR 2024

SE-3, 22 FEB 2024 to 21 MAR 2024