

ARLIN FOUR ARRIVAL

AL-322 (FAA)

PHOENIX, ARIZONA

SW-4, 22 FEB 2024 to 21 MAR 2024

ARRIVAL ROUTE DESCRIPTION

BLYTE TRANSITION (BLH.ARLIN4): From over BLH VORTAC on BLH R-089 and IWA R-256 to ARLIN INT. Thence. . . .

MOHAK TRANSITION (MOHAK.ARLIN4): From over MOHAK INT on GBN R-247 and BXK R-215 to HYDRR INT, then on IWA R-256 to ARLIN INT. Thence. . . .

PHOENIX SKY HARBOR INTL: Rwy 7L/R or 8: From over ARLIN, Expect vectors to final approach course; Rwy 25L/R or 26: From over ARLIN, on IWA R-256 to TUKEE. Expect vectors to final approach course prior to TUKEE.

SATELLITE AIRPORTS: Expect vectors after passing SCOLE or JUDTH.

LOST COMMUNICATIONS: After ARLIN, on IWA R-256 and PXR R-143 to PXR VORTAC.

NOTE: BLYTHE Transition for turbojet aircraft FL240 and above.

Turboprop aircraft plan BLYTHE ARRIVAL at or below FL230.

NOTE: MOHAK Transition for turbojet and turboprop aircraft.

NOTE: TURBOPROPS landing KPHX expect vectors after passing SCOLE or JUDTH.

SCOLE

VERTICAL NAVIGATION PLANNING INFORMATION

FL180 089° (35)

FL1000 089° (48) Expect FL250

FL1000 076° (75) (4)

FL1000 076° (111) (8)

FL250K 250K PAYNT 256° (8)

FL250K 250K PAYNT 256° (8)

FL250K 250K PAYNT 256° (8)

FL250K 250K PAYNT 256° (8)

FL250K 250K PAYNT 256° (8)

FL250K 250K PAYNT 256° (8)

FL250K 250K PAYNT 256° (8)

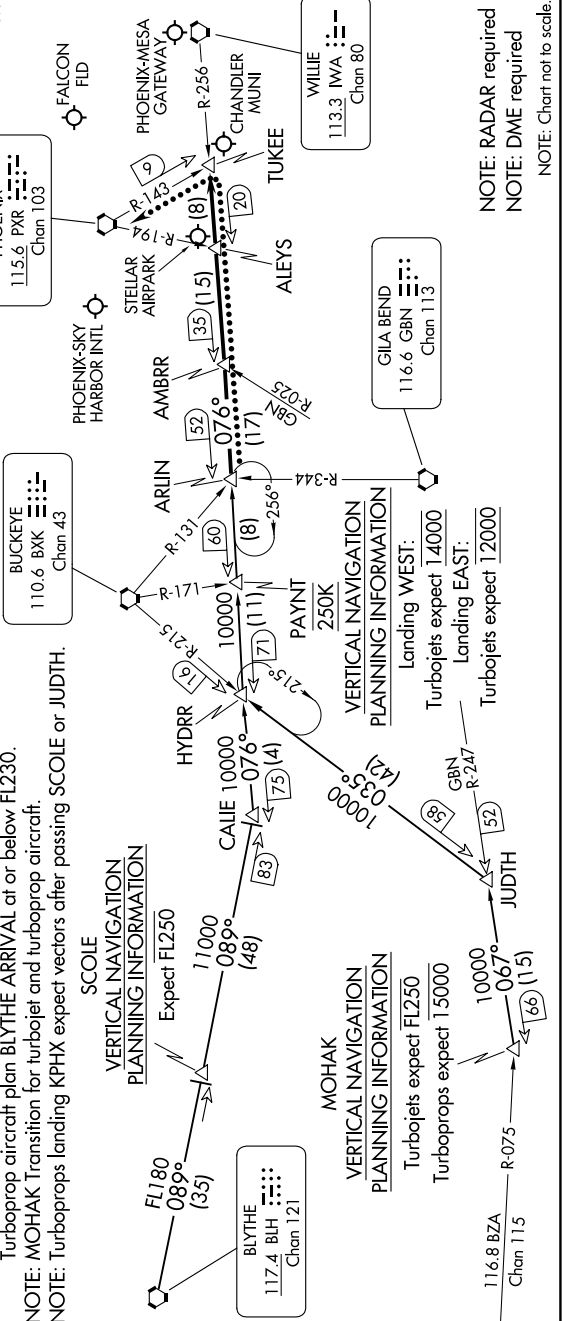
FL250K 250K PAYNT 256° (8)



PHOENIX APP CON 124.1 256.9
 PHOENIX TOWER 118.7 278.8 (Rwy 8-26)
 PHOENIX GND CON 120.9 254.3 (Rwy 7L-23R, 7R-25L)
 CHD ATIS 119.75 269.2
 128.325
 FFZ ATIS 118.25
 DVT ATIS 126.5
 IWA ATIS* 133.5 270.275
 PHX D-ATIS 127.575
 SDL ATIS* 118.6

PHOENIX-DEER VALLEY
 SCOTTSDALE
 PHOENIX 115.6 PXR Chan 103
 PHOENIX-SKY HARBOR INTL
 FALCON FLD
 PHOENIX-MESA GATEWAY
 CHANDLER MUNI
 TUKEE
 WILIE 113.3 IWA --- Chan 80

STELLAR AIRPARK
 ALEYS
 GILA BEND 116.6 GBN --- Chan 113



NOTE: RADAR required
NOTE: DME required
NOTE: Chart not to scale.

ARLIN FOUR ARRIVAL

PHOENIX, ARIZONA

SW-4, 22 FEB 2024 to 21 MAR 2024