

VORTAC FBC 108.2 Chan 19	APP CRS 048°	Rwy Idg 4558 TDZE 810 Apt Elev 813
----------------------------------------------	------------------------	---------------------------------------------------------------

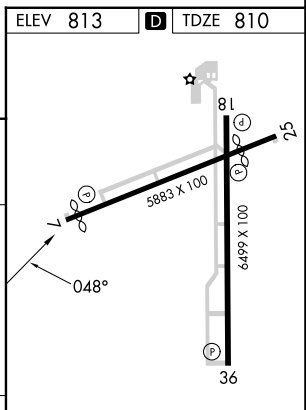
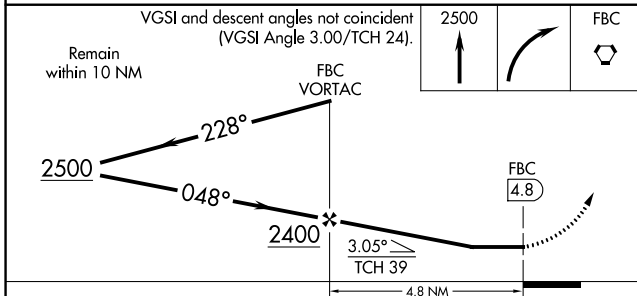
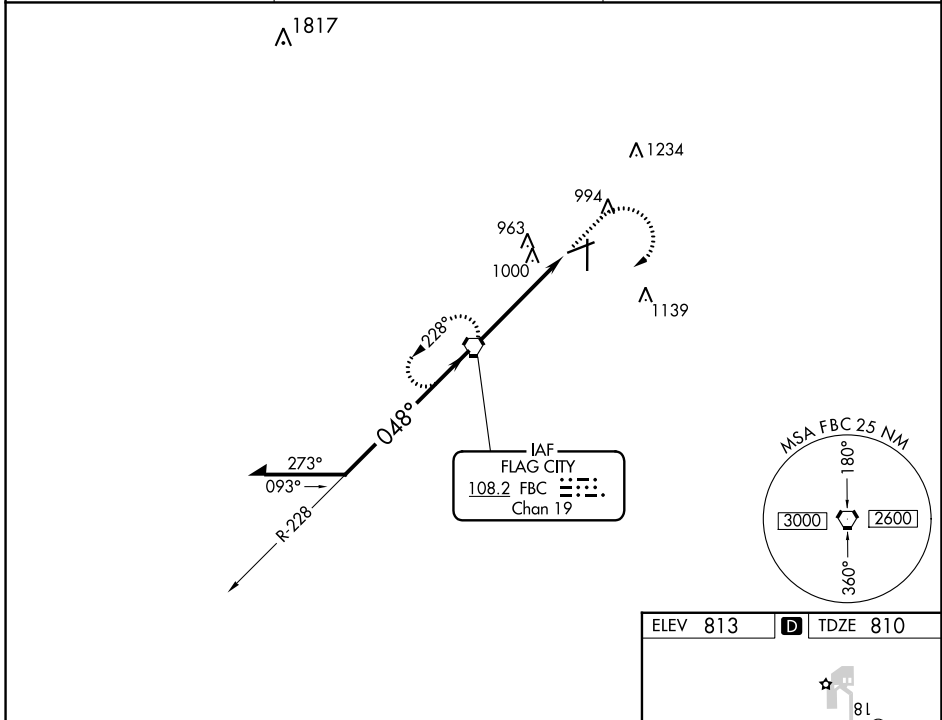
VOR RWY 7

FINDLAY (FDY)

⚠ Rwy 7 helicopter visibility reduction below 1 SM NA. When local altimeter setting not received, use Lima Allen County altimeter setting and increase all MDA 80 feet, and increase S-07 visibility Cat C/D 1/8 SM, and Circling visibility Cat C/D 1/4 SM. Straight-In Rwy 7 NA at night, Circling Rwy 7 NA at night.

⚠ MISSED APPROACH: Climb to 2500 then right turn direct FBC VORTAC and hold.

ASOS 132.85	TOLEDO APP CON 120.8 317.55	UNICOM 122.725 (CTAF) 0
-----------------------	---------------------------------------	-----------------------------------



CATEGORY	A	B	C	D	HIRL Rws 7-25 and 18-36 REIL Rws 7, 25 and 36	
S-7	1260-1	450 (500-1)	1260-1 1/4 450 (500-1 1/4)	1260-1 1/2 450 (500-1 1/2)	FAF to MAP 4.8 NM	
C CIRCLING	1440-1	627 (700-1)	1440-1 3/4 627 (700-1 3/4)	1540-2 1/4 727 (800-2 1/4)		
	Knots	60	90	120	150	180
	Min:Sec	4:48	3:12	2:24	1:55	1:36