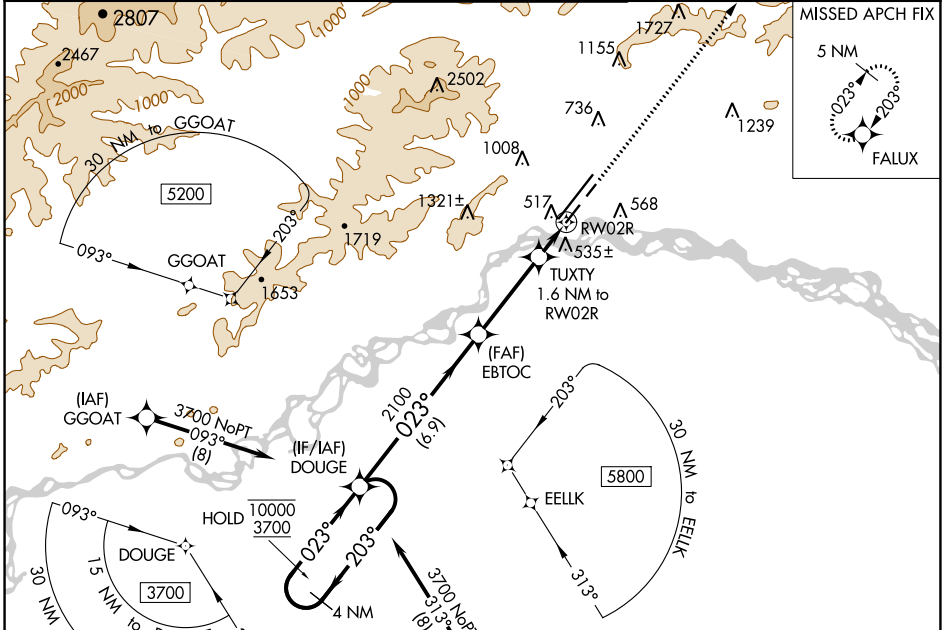


WAAS CH 53612 W02A	APP CRS 023°	Rwy Idg 4510 TDZE 433 Apt Elev 439
--	------------------------	---

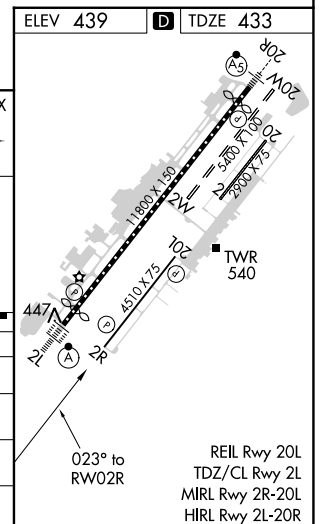
RNAV (GPS) RWY 2R

FAIRBANKS INTL (FAI) (PAFA)

RNP APCH - GPS.		FAIRBANKS APP CON		FAIRBANKS TOWER		GND CON	CLNC DEL
<p>⚠ Circling NA west of Rwy 2L-20R. Circling NA to Rws 2W and 20W. ⚠ -32°C Rwy 2R helicopter visibility reduction below ¾ SM NA. For uncompensated Baro-VNAV systems, LNAV/VNAV NA below -21°C or above 54°C.</p>		<p>124.4 125.35 363.2</p>		<p>118.3 257.8</p>		121.9	127.6



4 NM Holding Pattern		DOUGE	EBTOC	4900	FALUX
10000	← 203°	DOUGE	2100	↑	✦
3700	→ 023°	DOUGE	TUXTY 1.6 NM to RWY 2R		
GP 3.00°			1 NM to RWY 2R		
TCH 40			*980		
		6.9 NM	3.5 NM	0.6	1 NM
CATEGORY	A	B	C	D	
LPV DA		683-7/8	250 (300-7/8)		
LNAV/VNAV DA		731-1	298 (300-1)		
LNAV MDA		800-1	367 (400-1)		
CIRCLING	880-1 441 (500-1)	900-1 461 (500-1)	900-1½ 461 (500-1½)	1020-2 581 (600-2)	



AK, 25 JAN 2024 to 21 MAR 2024

AK, 25 JAN 2024 to 21 MAR 2024