

LOC/DME I-GHO 110.75 Chan 44 (Y)	APP CRS 092°	Rwy Idg 4300 TDZE 22 Apt Elev 22
---	------------------------	---

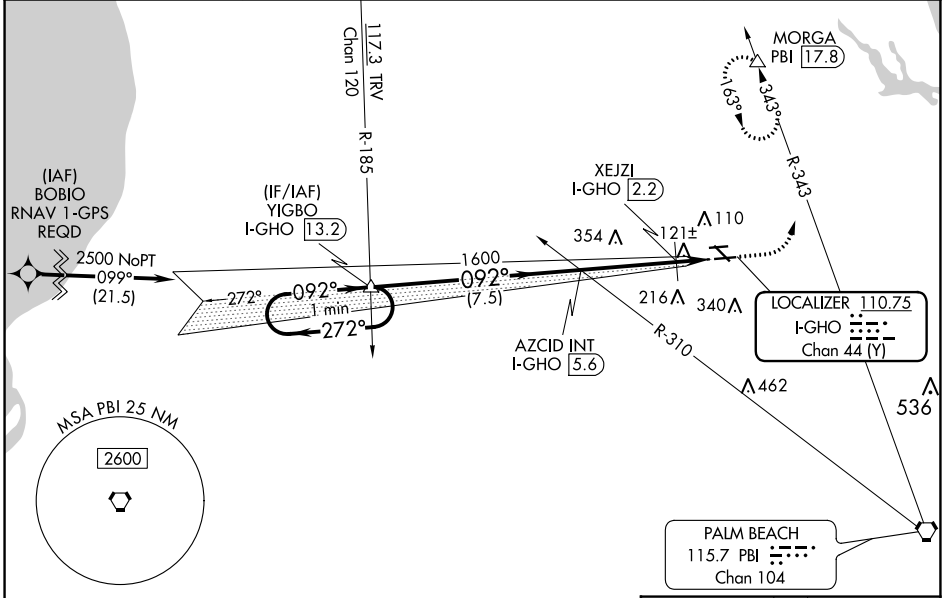
ILS or LOC RWY 9R

NORTH PALM BEACH COUNTY GENERAL AVIATION (F45)

NA Circling NA to Rwys 9L and 27R. DME required. When local altimeter setting not received, use Palm Beach Intl altimeter setting and increase all DA to 300 and all visibilities 1/8 SM; increase all MDAs 40 feet; increase XEJZI Fix Minimums S-LOC 9R Cats C/D visibility 1/8 SM. Rwy 9R helicopter visibility reduction below 3/4 SM NA.

MISSED APPROACH: Climb to 500 then climbing left turn to 2000 on hdg 033° and on PBI VORTAC R-343 to MORGA PBI 17.8 DME and hold.

AWOS-3 119.975	PALM BEACH APP CON 128.3 317.4	CLNC DEL 120.825	UNICOM 123.075 (CTAF)
--------------------------	--	----------------------------	---------------------------------



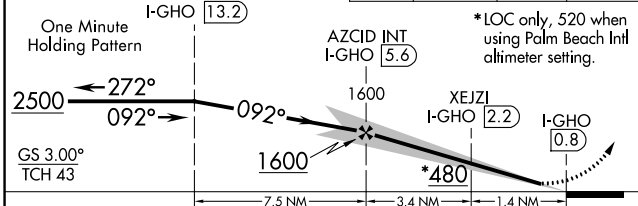
SE-3, 22 FEB 2024 to 21 MAR 2024

SE-3, 22 FEB 2024 to 21 MAR 2024

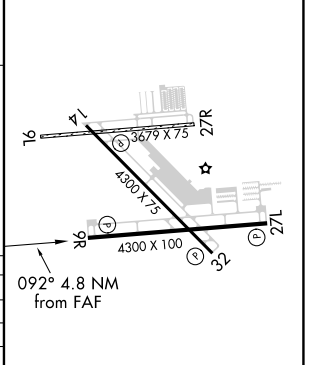
VGSI and ILS glidepath not coincident (VGSI Angle 3.00/TCH 40).

500	2000	PBI R-343	MORGA
-----	------	-----------	-------

hdg 033°



ELEV 22	TDZE 22
---------	---------



CATEGORY	A	B	C	D
S-ILS 9R		272-3/4	250 (300-3/4)	
S-LOC 9R	480-1	458 (500-1)	480-1 3/8	458 (500-1 3/8)
C CIRCLING	480-1	458 (500-1)	700-2 678 (700-2)	720-2 1/4 698 (700-2 1/4)
XEJZI FIX MINIMUMS				
S-LOC 9R	420-1	398 (400-1)	420-1 1/8	398 (400-1 1/8)
C CIRCLING	460-1 438 (500-1)	480-1 458 (500-1)	700-2 678 (700-2)	720-2 1/4 698 (700-2 1/4)

MIRL Rwys 9R-27L and 14-32 **L**
REIL Rwys 9R, 14, 27L and 32 **L**

FAF to MAP 4.8 NM

Knots	60	90	120	150	180
Min:Sec	4:48	3:12	2:24	1:55	1:36