

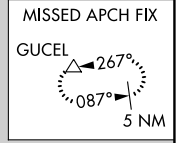
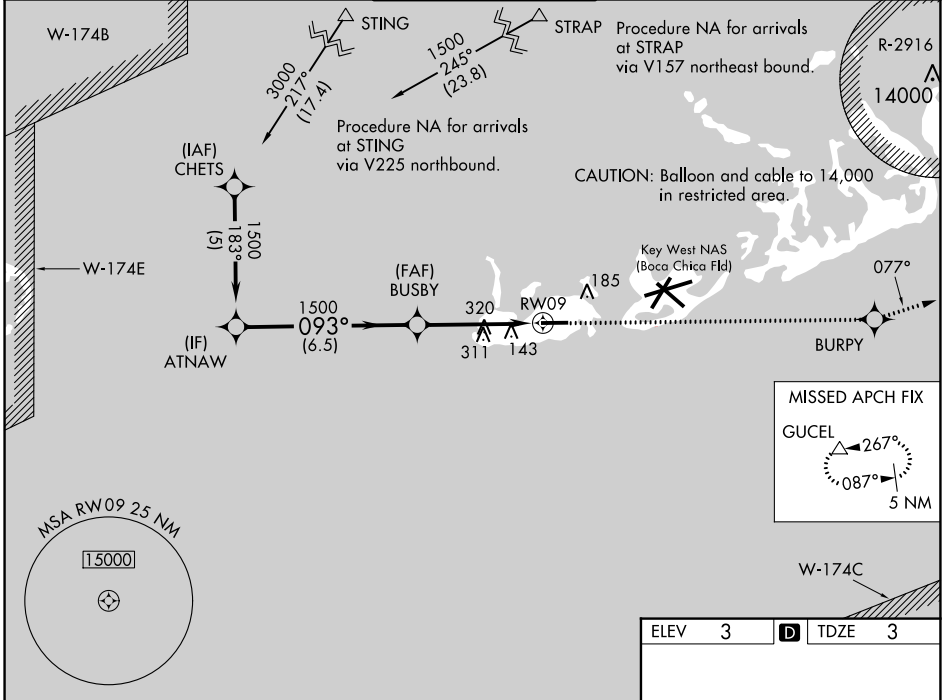
WAAS CH <b>40405</b> <b>W09A</b>	APP CRS <b>093°</b>	Rwy Idg <b>4801</b> TDZE <b>3</b> Apt Elev <b>3</b>
--	------------------------	---

# RNAV (GPS) RWY 9

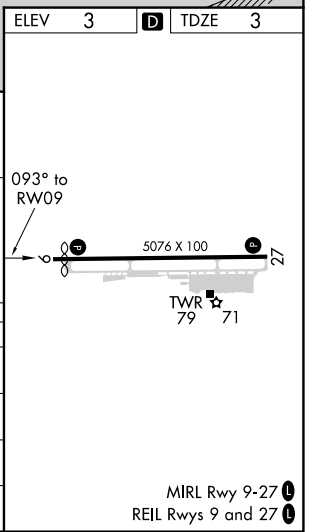
KEY WEST INTL (EYW)

RNP APCH-GPS.		<p>For uncompensated Baro-VNAV systems, LNAV/VNAV NA below -15°C or above 48°C. Rwy 9 helicopter visibility reduction below 3/4 SM NA. If local altimeter setting not received, use Key West NAS (Boca Chica fld) altimeter setting.</p>			<p>MISSED APPROACH: Climb to 3000 direct BURPY and via 077° track to GUCEL and hold.</p>	
---------------	--	--	--	--	--	--

ATIS <b>119.675</b>	NAVY KEY WEST APP CON * <b>124.025 313.7</b>	KEY WEST TOWER * <b>118.2 (CTAF) 257.8</b>	GND CON <b>121.9</b>	CLNC DEL <b>121.9</b>	UNICOM <b>122.95</b>
------------------------	---	---	-------------------------	--------------------------	-------------------------



Procedure Turn NA	ATNAW	BUSBY	3000	BURPY	077° tr	GUCEL
GP 3.00° TCH 35	1500	1500	3000	BURPY	077° tr	GUCEL
	6.5 NM	4.5 NM				
CATEGORY	A	B	C	D		
LPV DA	253-1		250 (300-1)			
LNAV/VNAV DA	425-1½		422 (500-1½)			
LNAV MDA	580-1	577 (600-1)	580-1½	577 (600-1½)	580-1¾	577 (600-1¾)
CIRCLING	580-1	577 (600-1)	620-1¾	617 (700-1¾)	620-2	617 (700-2)



SE-3, 22 FEB 2024 to 21 MAR 2024

SE-3, 22 FEB 2024 to 21 MAR 2024