

WAAS CH <b>82711</b> <b>W04A</b>	APP CRS <b>041°</b>	Rwy Idg TDZE <b>389</b> Apt Elev <b>422</b>	<b>8021</b>
--	------------------------	---	-------------

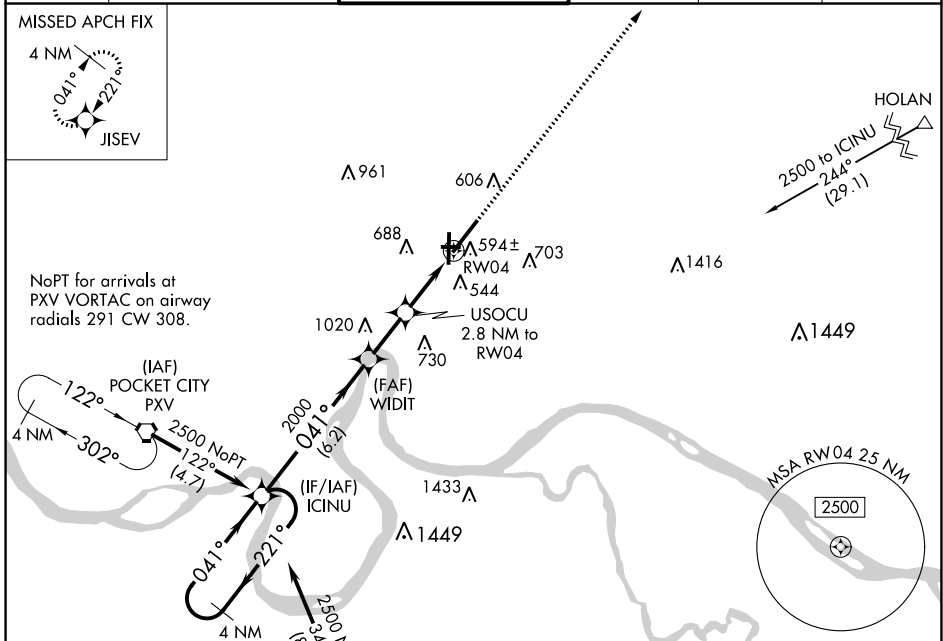
# RNAV (GPS) RWY 4

EVANSVILLE RGNL (E V V)

**ASR** For uncompensated Baro-VNAV systems, LNAV/VNAV NA below -15°C (5°F) or above 54°C (130°F). DME/DME RNP-0.3 NA. Circling Rwy 9 NA at night.

**MISSED APPROACH:** Climb to 2500 direct JISEV and hold.

ATIS <b>120.2</b>	EVANSVILLE APP CON ★ <b>124.025 290.9</b>	EVANSVILLE TOWER ★ <b>118.7(CTAF) 257.8</b>	GND CON <b>121.9</b>	CLNC DEL <b>126.6</b>	UNICOM <b>122.95</b>
----------------------	--	--	-------------------------	--------------------------	-------------------------

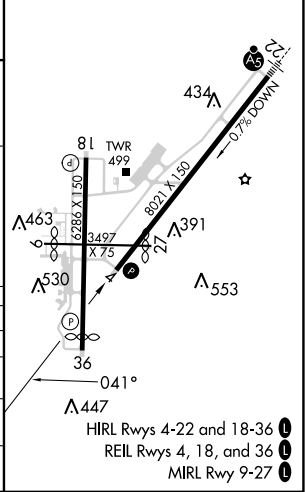
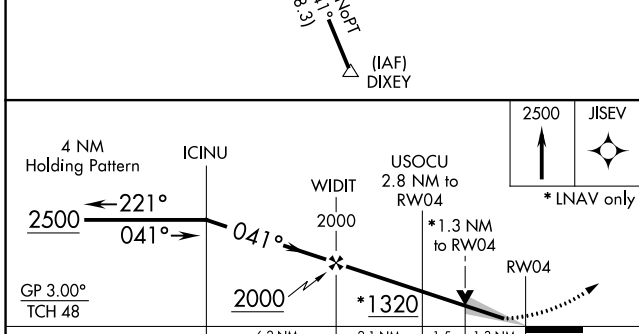


NoPT for arrivals at PXV VORTAC on airway radials 291 CW 308.

EC-2, 22 FEB 2024 to 21 MAR 2024

EC-2, 22 FEB 2024 to 21 MAR 2024

ELEV 422	<b>D</b>	TDZE 389
----------	----------	----------



CATEGORY	A	B	C	D
LPV DA	589-3/4		200 (200-3/4)	
LNAV/VNAV DA	852-1 1/2		463 (500-1 1/2)	
LNAV MDA	860-1 471 (500-1)		860-1 3/8 471 (500-1 1/2)	
<b>C</b> CIRCLING	920-1 498 (500-1)	1040-1 618 (700-1)	1040-1 3/4 618 (700-1 3/4)	1040-2 618 (700-2)