

APP CRS	Rwy Idg	4494
127°	TDZE	882
	Apt Elev	887

RNAV (GPS) RWY 13

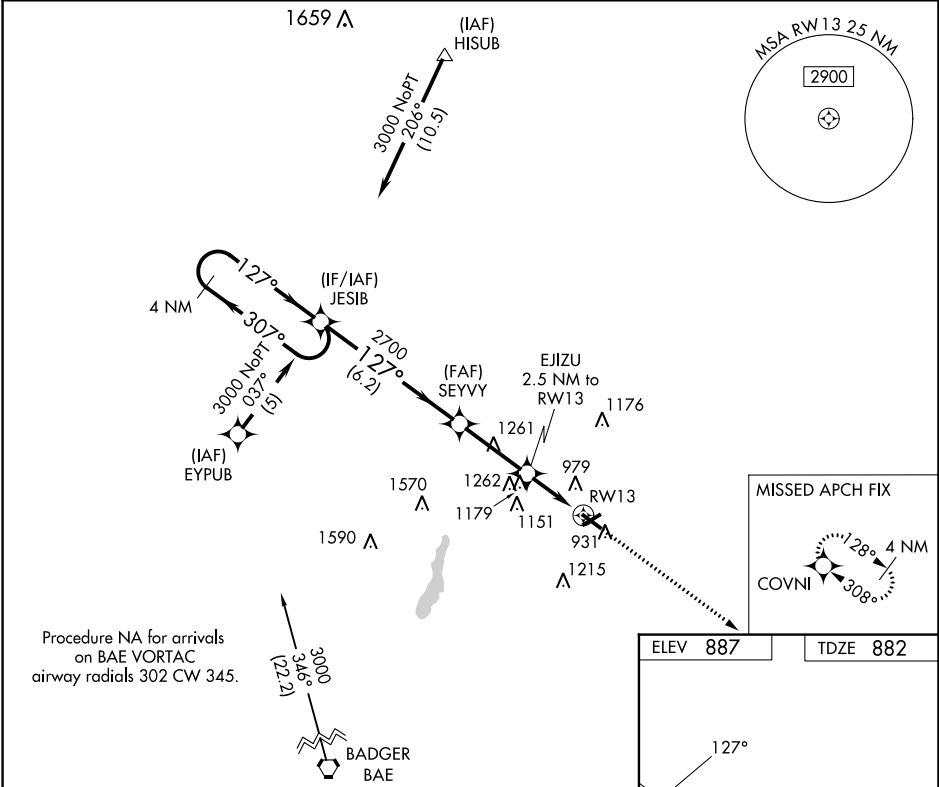
WEST BEND MUNI (E/TB)

RNP APCH - GPS.

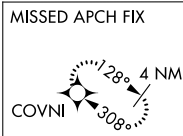
⚠ When local altimeter setting not received, use Milwaukee/Lawrence J Timmerman altimeter setting: increase all MDA 80 feet and increase LNAV Cat C/D visibility ½ SM and Circling Cat C/D visibility ¼ SM. Night landing: Rwy 6 NA. Helicopter visibility reduction below ¼ SM NA.

MISSED APPROACH:
Climb to 3000 direct
COVNI and hold.

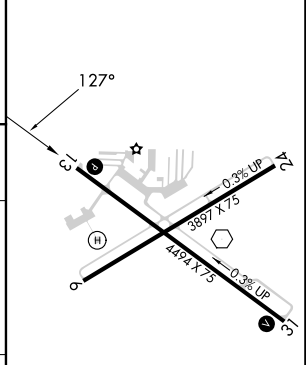
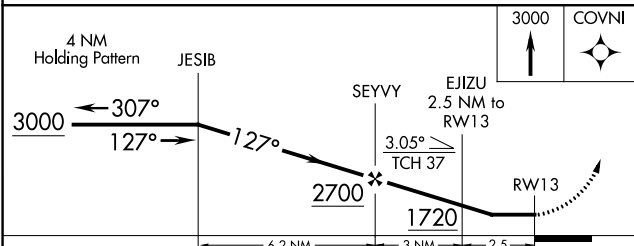
AWOS-3 120.0	MILWAUKEE APP CON 125.35 307.0	CLNC DEL 124.75	UNICOM 123.05 (CTAF) 0
------------------------	--	---------------------------	----------------------------------



Procedure NA for arrivals on BAE VORTAC airway radials 302 CW 345.



ELEV 887	TDZE 882
-----------------	-----------------



CATEGORY	A	B	C	D
LNAV MDA	1480-1 598 (600-1)	598 (600-1)	1480-1½ 598 (600-1½)	1480-1¾ 598 (600-1¾)
CIRCLING	1480-1 593 (600-1)	1520-1 633 (700-1)	1560-2 673 (700-2)	1560-2¼ 673 (700-2¼)

REIL Rwy 13 and 31 0
MIRL Rwy 6-24 and 13-31 0

EC-3, 22 FEB 2024 to 21 MAR 2024

EC-3, 22 FEB 2024 to 21 MAR 2024