

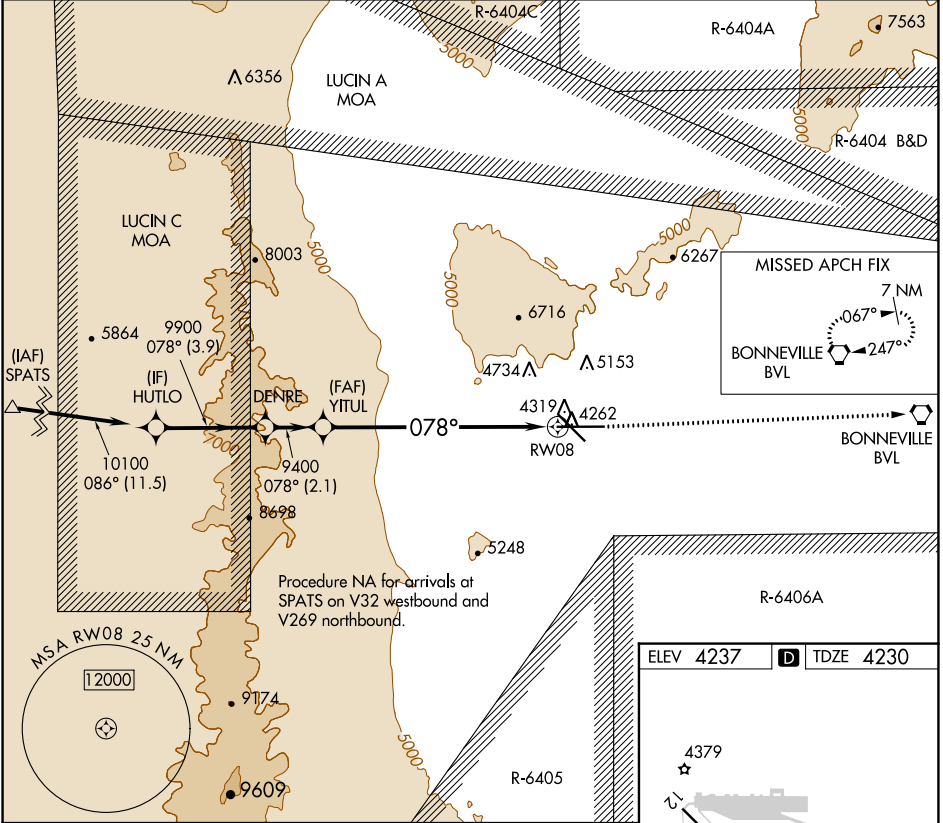
WAAS CH 42523 W08A	APP CRS 078°	Rwy Idg TDZE Apt Elev	10002 4230 4237
--	------------------------	-----------------------------	--

RNAV (GPS) RWY 8

WENDOVER (ENV)

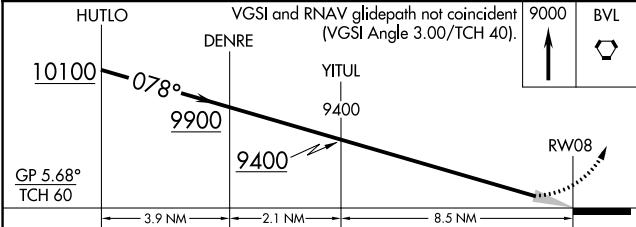
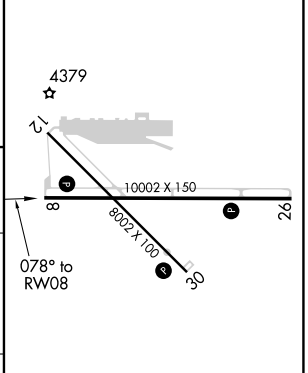
NA -13°C	Baro-VNAV NA. DME/DME RNP-0.3 NA.	MISSED APPROACH: Climb to 9000 direct BVL VORTAC and hold, continue climb-in-hold to 9000.
-------------	-----------------------------------	--

AWOS-3PT 120.55	SALT LAKE CENTER 128.55 269.175	UNICOM 122.8 (CTAF)
---------------------------	---	-------------------------------



Procedure NA for arrivals at SPATS on V32 westbound and V269 northbound.

ELEV 4237	TDZE 4230
-----------	-----------



CATEGORY	A	B	C	D
LPV DA	4560-1 330 (400-1)		NA	
LNAV/VNAV DA	4581-1 351 (400-1)		NA	

REIL Rwy 8, 12, 26 and 30

MIRL Rwy 8-26 and 12-30

SW-4, 22 FEB 2024 to 21 MAR 2024

SW-4, 22 FEB 2024 to 21 MAR 2024