

ENID, OKLAHOMA

VOR/DME or TACAN RWY 35C

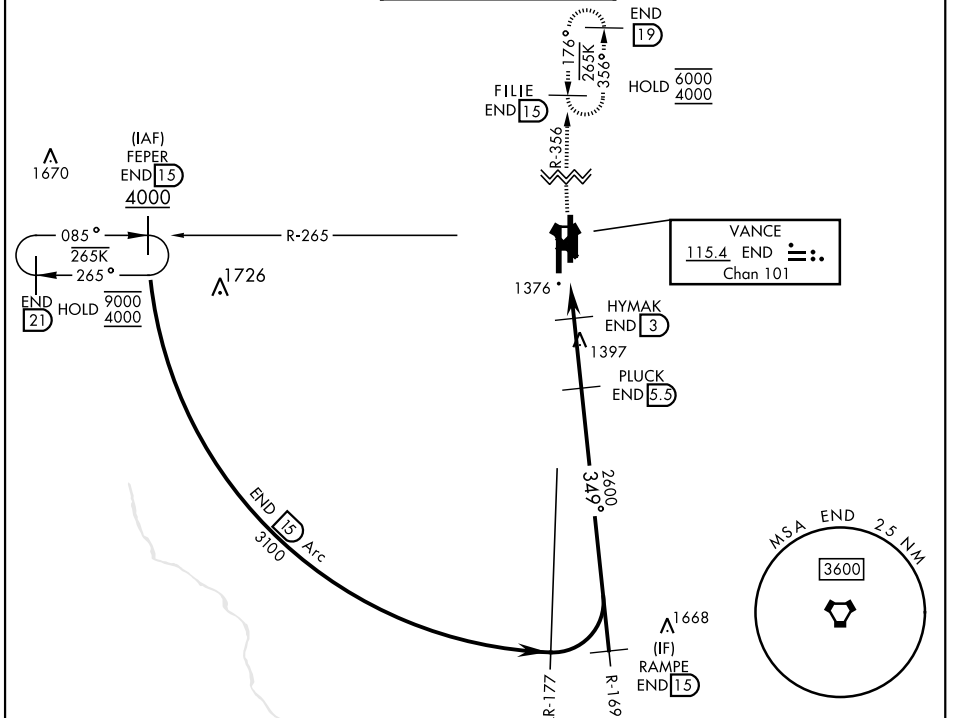
VORTAC END 115.4 Chan 101	APCH CRS 349°	Rwy Idg 9217 TDZE 1293 Arprt Elev 1307
---	-------------------------	---

AL-135 [USAF]

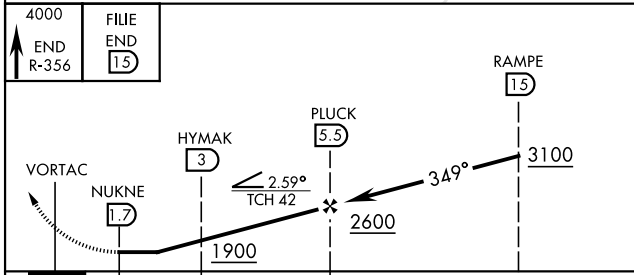
VANCE AFB (KEND)

▽ * When ALS inop, increase RVR to 55, vis to 1 mile.	SALSF (A2)	MISSED APPROACH: Climb to 4000, intercept END VORTAC R-356 to FILIE and hold.
--	----------------------	--

ATIS ★ 115.4 263.15	APP CON 125.45 388.2 EAST 126.75 346.325 WEST	TOWER ★ 124.05 259.1	GND CON 121.675 289.4	CLNC DEL 225.4
-------------------------------	---	--------------------------------	---------------------------------	--------------------------

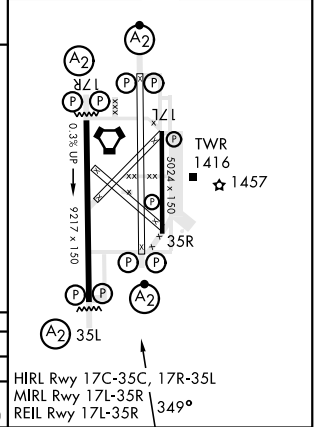


EMERG SAFE ALT 100 NM 4500



4000 ↑ END R-356	FILIE END (15)	RAMPE (15)				
		VORTAC			NUKNE (1.7)	
		HYMAK (3)		PLUCK (5.5)		
		1900		2600		
		0.8		1.3 NM		
		2.5 NM				
CATEGORY	A	B	C	D	E	
S-35C *	1660/40		367	(400-34)		
CIRCLING	1760-1	453 (500-1)	1800-1½ 493 (500-1½)	1900-2 593 (600-2)	2300-3 993 (1000-3)	

ELEV 1307	TDZE 1293
-----------	-----------



ENID, OKLAHOMA
Amdt 5 24FEB22

36°20'N-97°55'W

VANCE AFB (KEND)

VOR/DME or TACAN RWY 35C

SC-1, 22 FEB 2024 to 21 MAR 2024

SC-1, 22 FEB 2024 to 21 MAR 2024