

LOC/DME I-EDE 110.95 Chan 46(Y)	APP CRS 190°	Rwy Idg 6001 TDZE 20 Apt Elev 20
---	------------------------	---

ILS or LOC RWY 19

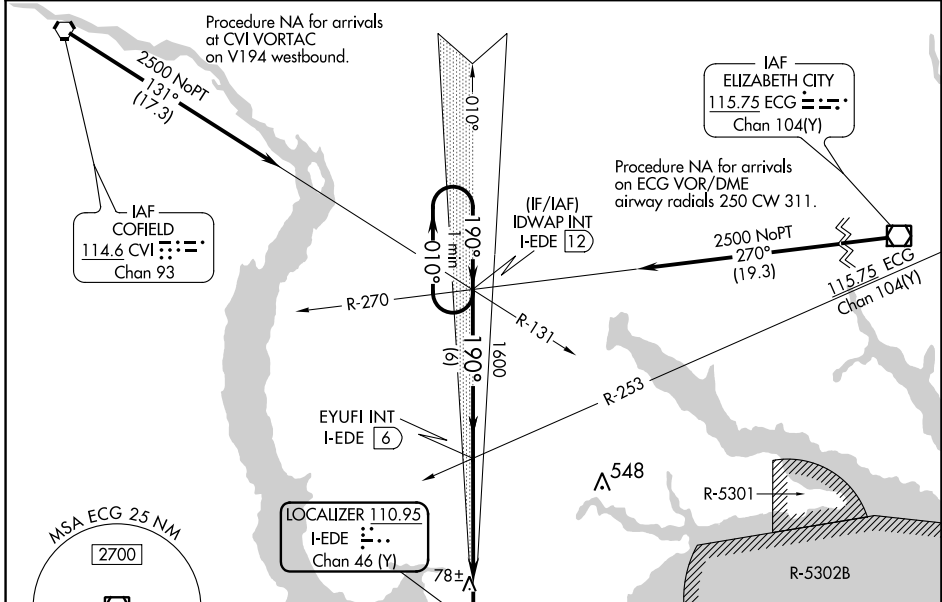
NORTHEASTERN RGNL (E/D/E)

DME or RADAR required for procedure entry.

⚠ When local altimeter setting not received, use Elizabeth City altimeter setting and increase all DA 56 feet and all MDA 60 feet and increase S-ILS 19 all Cats and S-LOC 19 Cats C/D visibility 1/8 mile. VDP NA when using Elizabeth City altimeter setting.

MISSED APPROACH: Climb to 600 then climbing right turn to 2500 on heading 030° and I-EDE localizer N course to IDWAP INT/I-EDE 12 DME and hold.

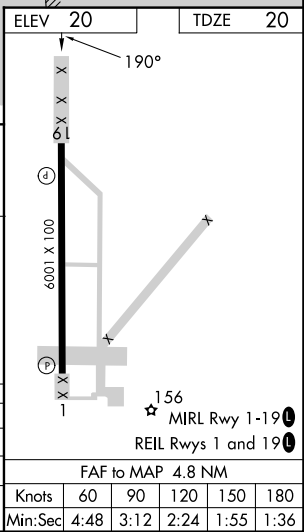
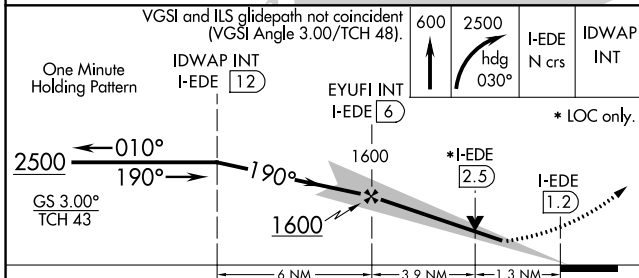
AWOS-3 118.275	WASHINGTON CENTER 123.85 279.65	UNICOM 123.0 (CTAF) 0
--------------------------	---	---------------------------------



One Minute Holding Pattern	IDWAP INT I-EDE 12	EYUFI INT I-EDE 6	600	2500	I-EDE N crs	IDWAP INT
----------------------------	--------------------	-------------------	-----	------	-------------	-----------

VGSI and ILS glidepath not coincident (VGSI Angle 3.00/TCH 48).

* LOC only.



CATEGORY	A	B	C	D
S-ILS 19		220-3/4	200 (200-3/4)	
S-LOC 19	480-1	460 (500-1)	480-1 3/8	460 (500-1 3/8)
CIRCLING	520-1	500 (500-1)	560-1 1/2	580-2
			540 (600-1 1/2)	560 (600-2)

FAF to MAP 4.8 NM					
Knots	60	90	120	150	180
Min:Sec	4:48	3:12	2:24	1:55	1:36

SE-2, 22 FEB 2024 to 21 MAR 2024

SE-2, 22 FEB 2024 to 21 MAR 2024