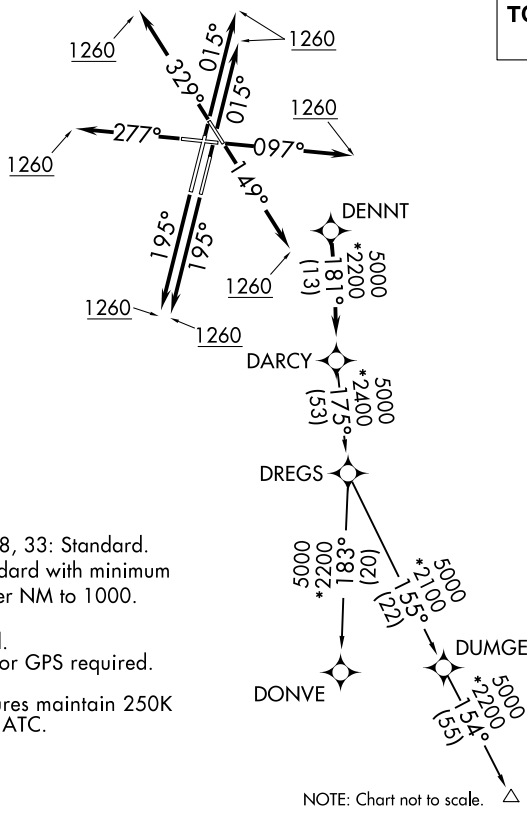


ATIS
132.075
GND CON
121.8
DUPAGE TOWER
120.9 257.8
CHICAGO DEP CON
133.5 349.0

TOP ALTITUDE:
3000



TAKEOFF MINIMUMS:

Rwys 2L/R, 10, 20L/R, 28, 33: Standard.
Rwy 15: 300-1³/₈ or standard with minimum
climb of 205' per NM to 1000.

- NOTE: RADAR required.
- NOTE: DME/DME/IRU or GPS required.
- NOTE: RNAV 1.
- NOTE: Turbojet departures maintain 250K
until advised by ATC.

NOTE: Chart not to scale. △ SCOTO

DEPARTURE ROUTE DESCRIPTION

- TAKEOFF RUNWAYS 2L/R: Climb heading 015° to 1260, then as assigned by ATC, for vectors to DENNT. Thence
- TAKEOFF RUNWAY 10: Climb heading 097° to 1260, then as assigned by ATC, for vectors to DENNT. Thence
- TAKEOFF RUNWAY 15: Climb heading 149° to 1260, then as assigned by ATC, for vectors to DENNT. Thence
- TAKEOFF RUNWAYS 20L/R: Climb heading 195° to 1260, then as assigned by ATC, for vectors to DENNT. Thence
- TAKEOFF RUNWAY 28: Climb heading 277° to 1260, then as assigned by ATC, for vectors to DENNT. Thence
- TAKEOFF RUNWAY 33: Climb heading 329° to 1260, then as assigned by ATC, for vectors to DENNT. Thence

. . . . on track 181° to DARC, then on (transition). Maintain 3000.
Expect filed altitude 10 minutes after departure.

- DONVE TRANSITION (DARCY6.DONVE):
- SCOTO TRANSITION (DARCY6.SCOTO):

EC-3, 22 FEB 2024 to 21 MAR 2024

EC-3, 22 FEB 2024 to 21 MAR 2024